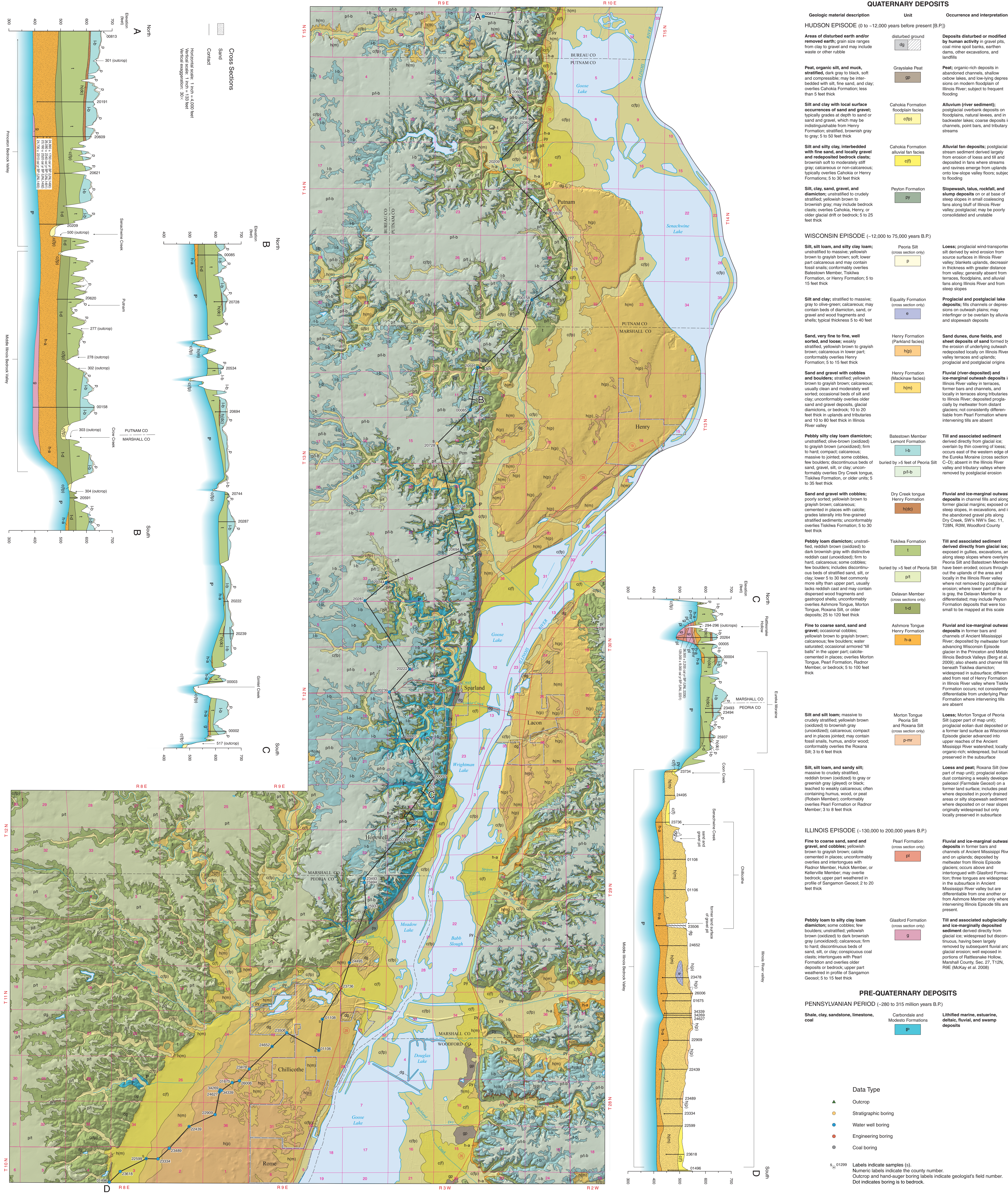


SURFICIAL GEOLOGY OF THE MIDDLE ILLINOIS RIVER VALLEY BUREAU, MARSHALL, PEORIA, PUTNAM, AND WOODFORD COUNTIES, ILLINOIS

E. Donald McKay III, Richard C. Berg, Andrew J. Stumpf, and C. Pius Weibel
2010



Base map compiled by Illinois State Geological Survey from digital and paper data provided by the United States Geological Survey.

North American Datum of 1983 (NAD 83)
Projection: Transverse Mercator

Recommended citation:
McKay, E. D., III, R. C. Berg, A. J. Stumpf, and C. P. Weibel, 2010, Surficial Geology of the Middle Illinois River Valley Bureau, Marshall, Peoria, Putnam, and Woodford Counties, Illinois, Illinois State Geological Survey, Illinois Map 16, 1:48,000; report, 7 p.

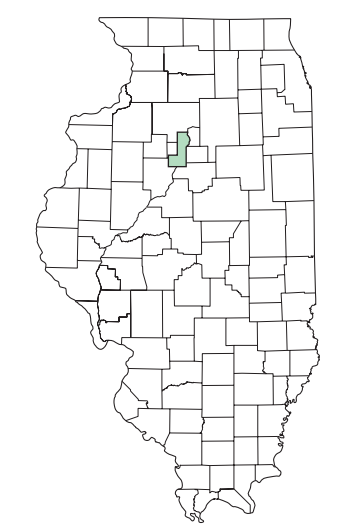
SCALE 1:48,000
1 1/2 0 1 2 3 4 MILES
0 1 2 3 4 KILOMETERS

Geology based on field work by E. Donald McKay III, Richard C. Berg, C. Pius Weibel, and Andrew J. Stumpf, 2001–2007, and compiled from 1:24,000 scale maps (McKay et al. 2007a, 2007b, 2007c; Stumpf 2010).

Digital cartography by Jennifer E. Carrell and Jane E.J. Dornier, Illinois State Geological Survey.

The Illinois State Geological Survey and the University of Illinois make no guarantee, expressed or implied, regarding the correctness of the interpretations presented in this document and accept no liability for the consequences of decisions made by others on the basis of the information presented here. The geologic interpretations are based on data that may vary with respect to accuracy of geographic location, the type and quantity of data available at each location, and the scientific and technical qualifications of the data sources. Maps or cross sections in this document are not meant to be enlarged.

© 2010 University of Illinois Board of Trustees. All rights reserved.
For permission information, contact the Illinois State Geological Survey.



1	2
3	4
5	6

QUADRANGLES
1 Putnam
2 Peoria
3 Lacon
4 Henry
5 Rome
6 Chillicothe

