

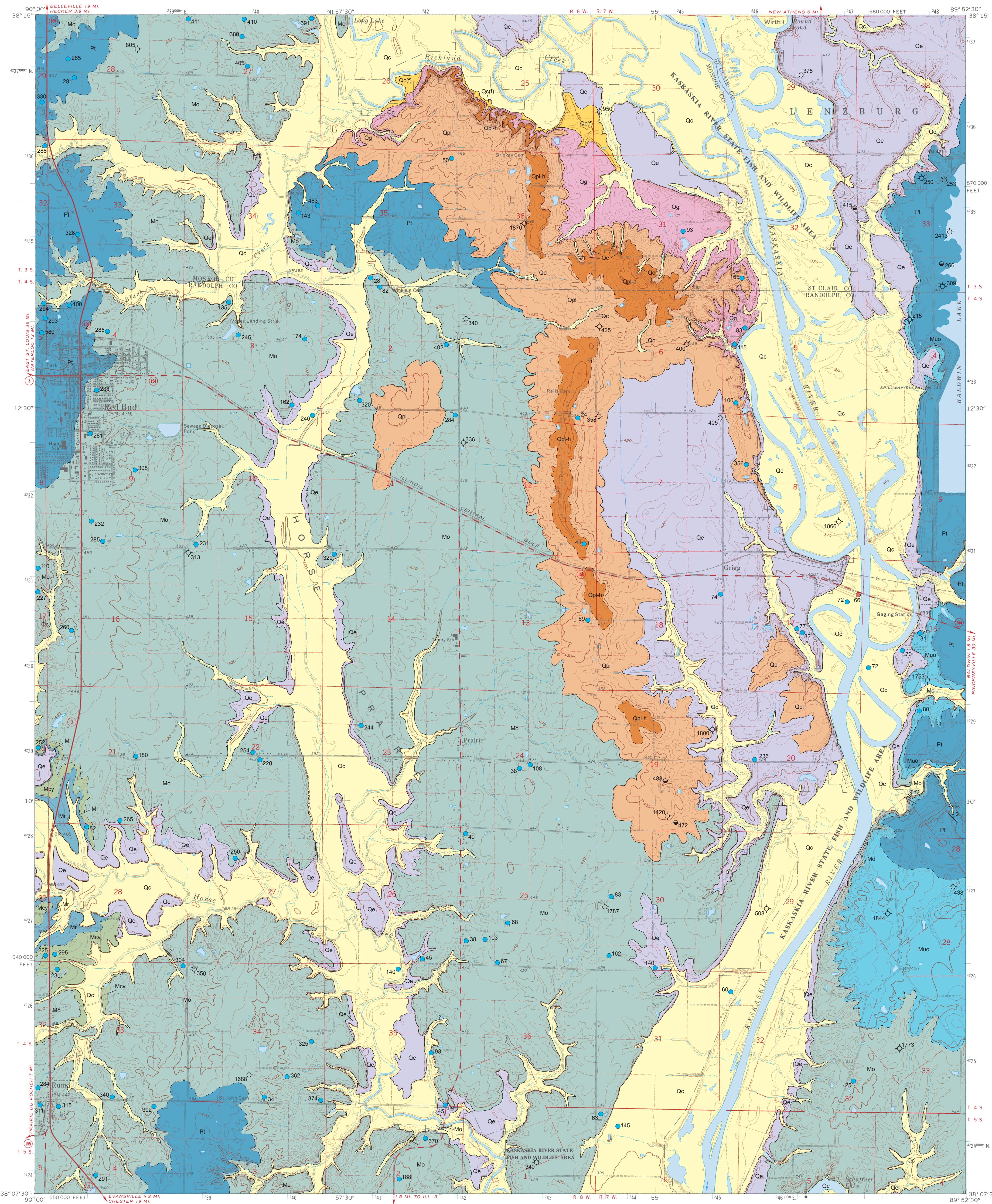
GEOLOGY OF RED BUD QUADRANGLE

RANDOLPH, MONROE AND ST. CLAIR COUNTIES, ILLINOIS

Department of Natural Resources
ILLINOIS STATE GEOLOGICAL SURVEY
William W. Shiels, Chief

Joseph A. Devera
2004

Illinois Preliminary Geologic Map
IPGM Red Bud-G

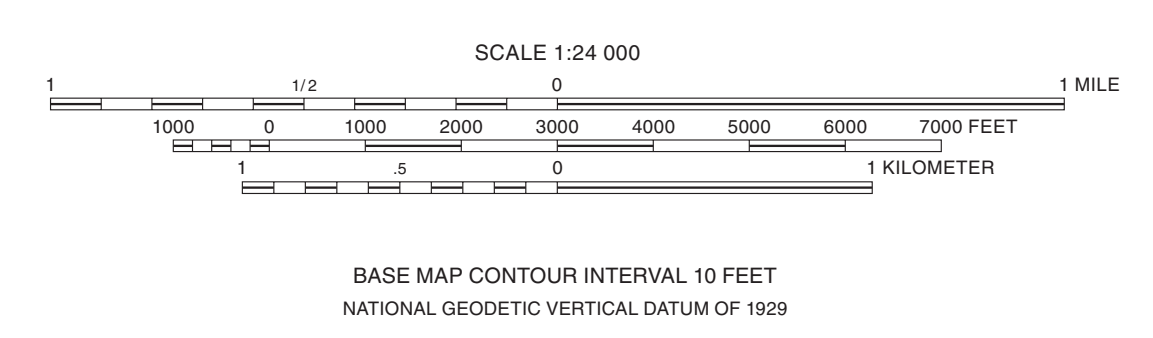


EXPLANATION			
Qc	Cahokia Formation	Holocene	
Qc(f)	Cahokia Formation (fan deposits)		
Unconformity		Quaternary	
Qe	Equally Formation over Henry Formation		
Qpl-h	Pearl Formation Hagarstown Member		Pleistocene
Qpl	Pearl Formation		
Qg	Glasford Formation	Pennsylvanian	
Pt	Tradewater Formation		Desmoinesian Atokan
Muo	"Upper Okaw" includes Tar Springs, Vienna, Watersburg	Mississippian	
Mo	"Lower Okaw" includes Glen Dean and Golconda		
Mcy	Cypress Sandstone		Chestertian
Mr	Ridenhower Formation		

Symbols	
40	Strike and dip of bedding; number indicates degree of dip
X	Abandoned quarry
Drill Holes from which subsurface data was obtained	
○	Dry oil test hole
○	Show of oil
○	Show of gas
●	Water well
●	Engineering boring
Note: Numbers indicate total depth of boring in feet.	
Line Symbols	
---	dashed where inferred, dotted where concealed
---	Contact

Base map compiled by Illinois State Geological Survey from digital data provided by the United States Geological Survey. Topography compiled from imagery dated 1988. Field checked 1970. Photorevision in 1982 from imagery dated 1980.

North American Datum of 1983 (NAD 83)
Projection: Transverse Mercator
10,000-foot ticks: Illinois State Plane Coordinate system, west zone (Transverse Mercator)
1,000-meter ticks: Universal Transverse Mercator grid system, zone 16



Geology based on field work by Joseph A. Devera, 2003-2004.

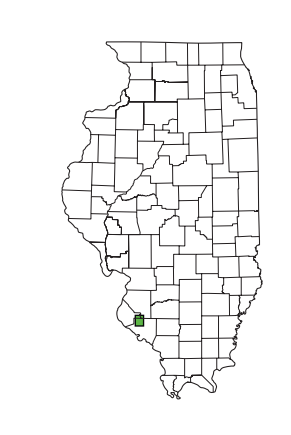
Digital cartography by L. Verhelst and J. Domier, Illinois State Geological Survey.

This Illinois Preliminary Geologic Map (IPGM) is a lightly edited product, subject to less scientific and cartographic review than our Illinois Geological Quadrangle (IGQ) series. It will not necessarily correspond to the format of IGQ series maps, or to those of other IPGM series maps. Whether or when this map will be upgraded depends on the resources and priorities of the IGQS.

Recommended citation:
Devera, Joseph A., 2004, Geology of Red Bud Quadrangle, Randolph, Monroe and St. Clair Counties, Illinois: Illinois State Geological Survey, Illinois Preliminary Geologic Map, IPGM Red Bud-G, 1:24,000.

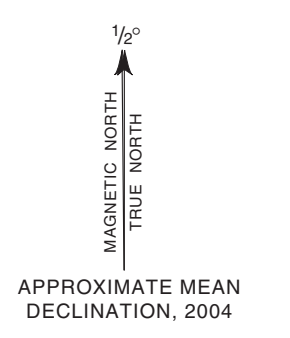
Released by the authority of the State of Illinois: 2004

The Illinois State Geological Survey, the Illinois Department of Natural Resources, and the State of Illinois make no guarantee, expressed or implied, regarding the correctness of the interpretations presented in this document and accept no liability for the consequences of decisions made by others on the basis of the information presented here. The geologic interpretations are based on data that may vary with respect to accuracy of geographic location, the type and quantity of data available at each location, and the scientific/technical qualifications of the data sources. Maps or cross sections in this document are not meant to be enlarged.



1	2	3
4	5	6
7	8	

ADJOINING QUADRANGLES
1 Padertown
2 New Athens West
3 New Athens East
4 Ames
5 Baldwin
6 Prairie Du Rocher
7 Evansville
8 Wash



ROAD CLASSIFICATION	
Primary highway, hard surface	Light-duty road, hard or improved surface
Secondary highway, hard surface	Unimproved road
Interstate Route (I-55)	U.S. Route (U.S. 151)
State Route (SR 106)	