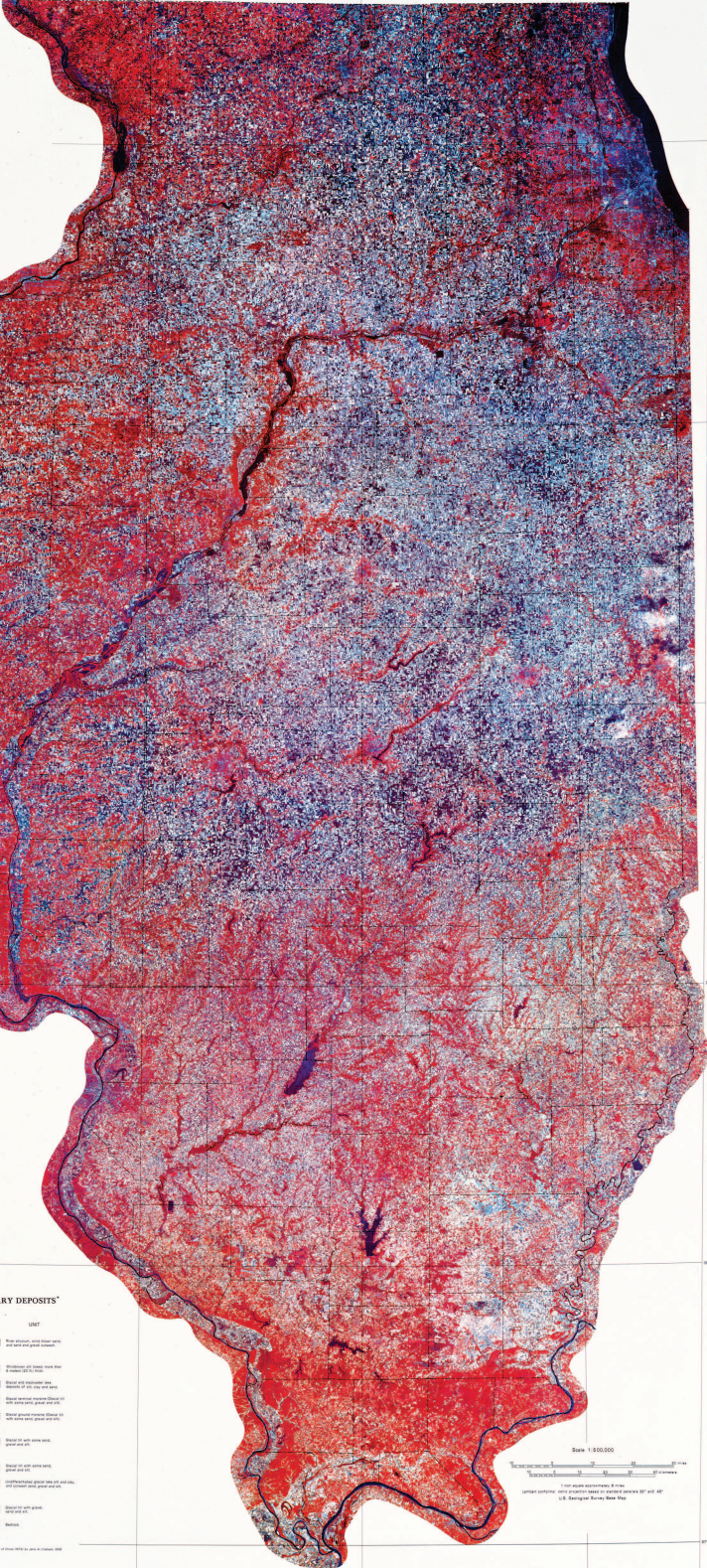
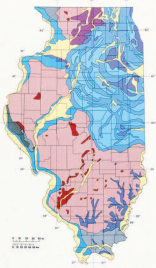
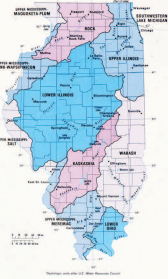


SATELLITE IMAGE MAP OF ILLINOIS

by
Richard E. Dahlberg, Northern Illinois University
Donald E. Luman, Northern Illinois University
Alden Warren, U. S. Geological Survey
with contributions by
Christopher Slight, Illinois State Geological Survey



MAJOR HYDROLOGIC UNITS, RIVERS, LAKES & RESERVOIRS



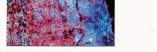
QUATERNARY DEPOSITS

AGE	UNIT
Illinoian	Blue siltstone, sandstone, and claystone
Sangamon	Light brown to tan sandstone, siltstone, and claystone
Pleistocene	Dark gray to black sandstone, siltstone, and claystone
Recent	Light brown to tan sandstone, siltstone, and claystone

SATELLITE IMAGE MAP OF ILLINOIS
The satellite image map of Illinois was prepared from a composite of Landsat MSS images collected during the period 1972 to 1983. The image is a false-color composite of three MSS channels (MSS-1, MSS-2, and MSS-7) and was processed to enhance the visibility of land cover features. The map is intended for use as a reference tool for land cover classification and monitoring. The image was processed using the following parameters:
MSS-1: 1:0.5:0.5
MSS-2: 1:0.5:0.5
MSS-7: 1:0.5:0.5
The image was processed using the following parameters:
Gain: 1.0
Contrast: 1.0
Threshold: 1.0
The image was processed using the following parameters:
Gain: 1.0
Contrast: 1.0
Threshold: 1.0



1. FORESTED
The forested areas of Illinois are primarily located in the northwestern and central parts of the state. The forest cover is predominantly composed of deciduous trees, with some evergreen trees in the northern part of the state. The forest cover is shown in green on the satellite image map.



2. DEVELOPED
The developed areas of Illinois are primarily located in the central and eastern parts of the state. The developed areas are composed of urban areas, agricultural areas, and industrial areas. The developed areas are shown in blue and white on the satellite image map.



3. AGRICULTURE
The agriculture areas of Illinois are primarily located in the central and southern parts of the state. The agriculture areas are composed of cropland, pastureland, and woodland. The agriculture areas are shown in red and pink on the satellite image map.



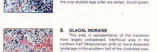
4. MISSISSIPPI RIVER VALLEY
The Mississippi River Valley of Illinois is primarily located in the eastern part of the state. The Mississippi River Valley is composed of alluvial plains, floodplains, and river channels. The Mississippi River Valley is shown in blue and white on the satellite image map.



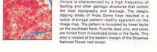
5. SANGAMON RIVER VALLEY
The Sangamon River Valley of Illinois is primarily located in the central part of the state. The Sangamon River Valley is composed of alluvial plains, floodplains, and river channels. The Sangamon River Valley is shown in red and pink on the satellite image map.



6. EAST OF ILLINOIS
The East of Illinois of Illinois is primarily located in the eastern part of the state. The East of Illinois is composed of alluvial plains, floodplains, and river channels. The East of Illinois is shown in blue and white on the satellite image map.



7. MISSISSIPPI RIVER VALLEY
The Mississippi River Valley of Illinois is primarily located in the eastern part of the state. The Mississippi River Valley is composed of alluvial plains, floodplains, and river channels. The Mississippi River Valley is shown in blue and white on the satellite image map.



8. SANGAMON RIVER VALLEY
The Sangamon River Valley of Illinois is primarily located in the central part of the state. The Sangamon River Valley is composed of alluvial plains, floodplains, and river channels. The Sangamon River Valley is shown in red and pink on the satellite image map.

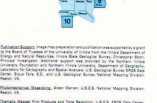


9. WEST OF ILLINOIS
The West of Illinois of Illinois is primarily located in the western part of the state. The West of Illinois is composed of alluvial plains, floodplains, and river channels. The West of Illinois is shown in red and pink on the satellite image map.



10. COMBINATION OF MISSISSIPPI AND SANGAMON RIVER VALLEYS
The combination of the Mississippi and Sangamon River Valleys of Illinois is primarily located in the eastern and central parts of the state. The combination of the Mississippi and Sangamon River Valleys is composed of alluvial plains, floodplains, and river channels. The combination of the Mississippi and Sangamon River Valleys is shown in blue and white on the satellite image map.

LOCATOR MAP FOR LANDSCAPE FEATURE DESCRIPTION



Scale: 1:500,000
GRAPHIC SCALE: 1:500,000
VERTICAL DATUM: 1983 NAVY DATUM
HORIZONTAL DATUM: 1983 NAVY DATUM
UNIT: METERS