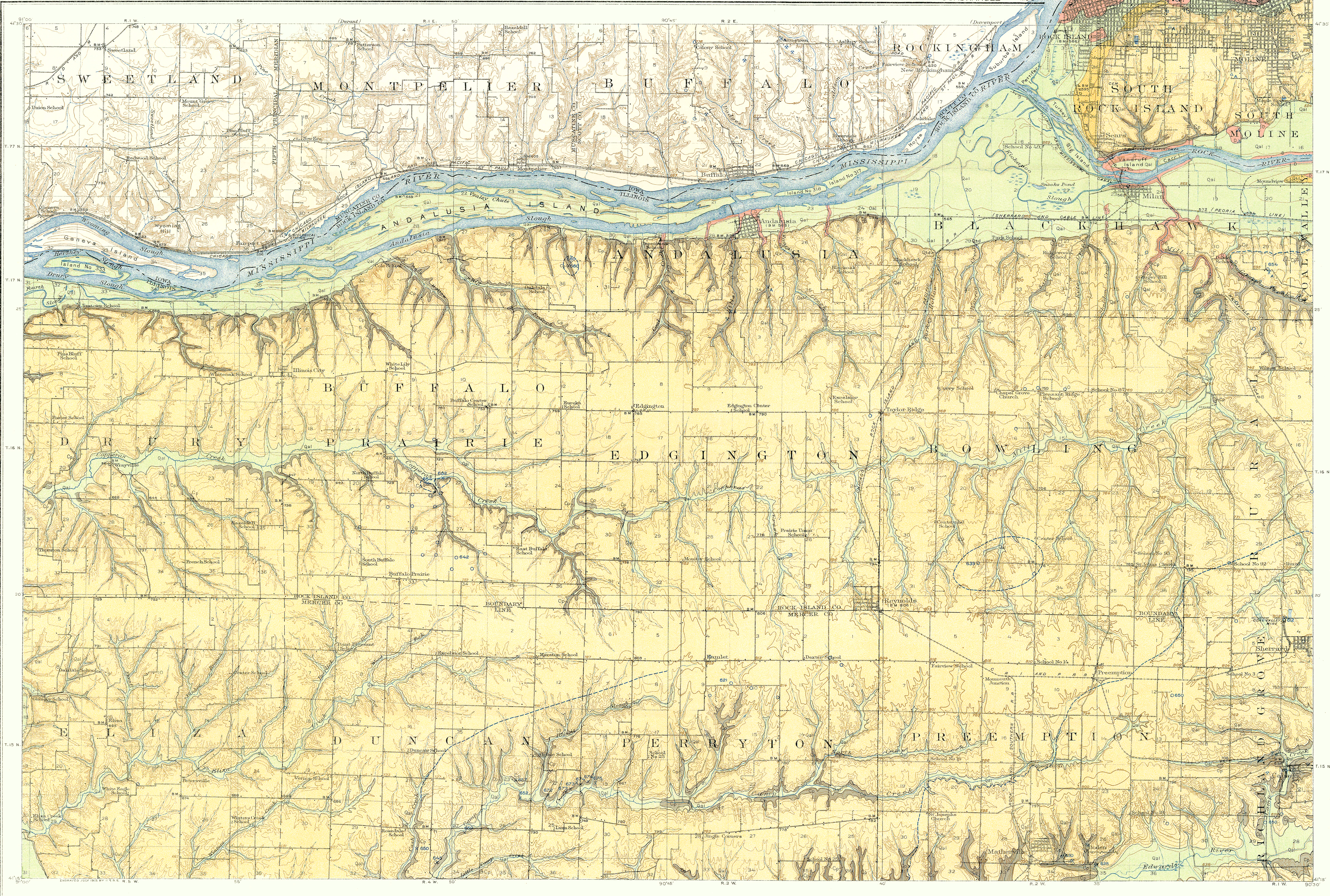


STATE OF ILLINOIS
 DEPARTMENT OF REGISTRATION AND EDUCATION
 FRANCIS W. SHEPARDSON, DIRECTOR
 STATE GEOLOGICAL SURVEY DIVISION
 ROLLIN D. SALISBURY, THE DIRECTOR OF REGISTRATION AND EDUCATION;
 KENDRICK C. BABCOCK, OF THE UNIVERSITY OF ILLINOIS, ADVISORS
 FRANK W. DEWOLF, CHIEF

BUL. NO. 38, PLATE II

EDGINGTON QUADRANGLE

MILAN QUADRANGLE



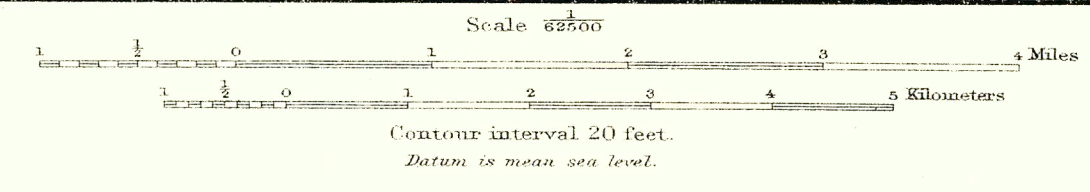
LEGEND

- Qal Alluvium
- Silt, sand, and gravel
- Qtd Terraces
- Glacial Till
- Pennington
- Devonian Limestone

ECONOMIC AND STRUCTURE DATA

- 672 Outcrop and altitude of coal
- 6390 Well and altitude of coal
- Clay and Clay Products
- Coal mine
- Abandoned coal mine
- Quarry
- Abandoned quarry

Topographic base map surveyed in cooperation with U. S. Geological Survey



Geology of the Milan Quadrangle by J. A. Udden; of the Edgington Quadrangle by T. E. Savage