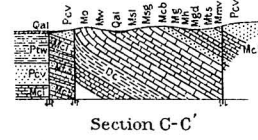
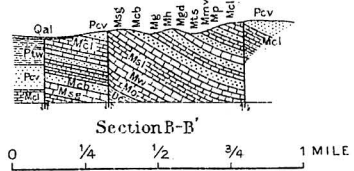
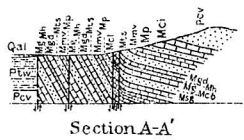


- EXPLANATION**
- Qal: Alluvium
  - Ptw: Tradewater formation
  - Pcv: Caseyville sandstone
  - Mcl: Kin kaid and Clore limestones
  - Mp: Palestine sandstone
  - Mm: Menard and Vienna limestones
  - Mh: Tar Springs sandstone
  - Mgd: Glen Dean limestone
  - Mg: Hardinsburg sandstone
  - Mcb: Golconda formation
  - Msg: Cypress and Bethel sandstones
  - Mst: Ste. Genevieve limestone
  - Wst: St. Louis limestone
  - Ww: Spergen(?) & Warsaw lss
  - Mo: Osage limestone
  - Dc: Chattanooga shale
- Faults** ———  
*(dashed where concealed by alluvium)*



**GEOLOGIC AND CROSS-SECTIONS OF THE FORMATIONS IN THE FAULT BLOCKS AT THE NORTH END OF CAVE HILL**