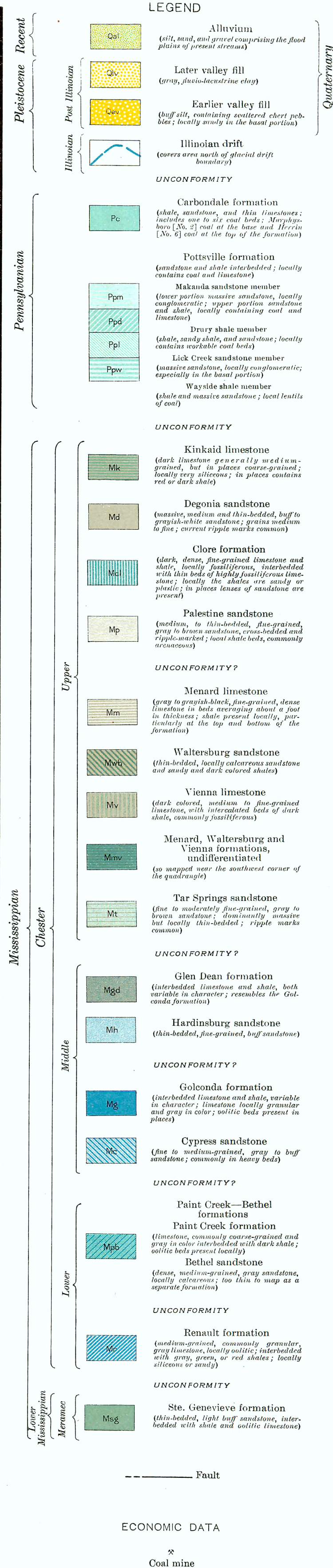
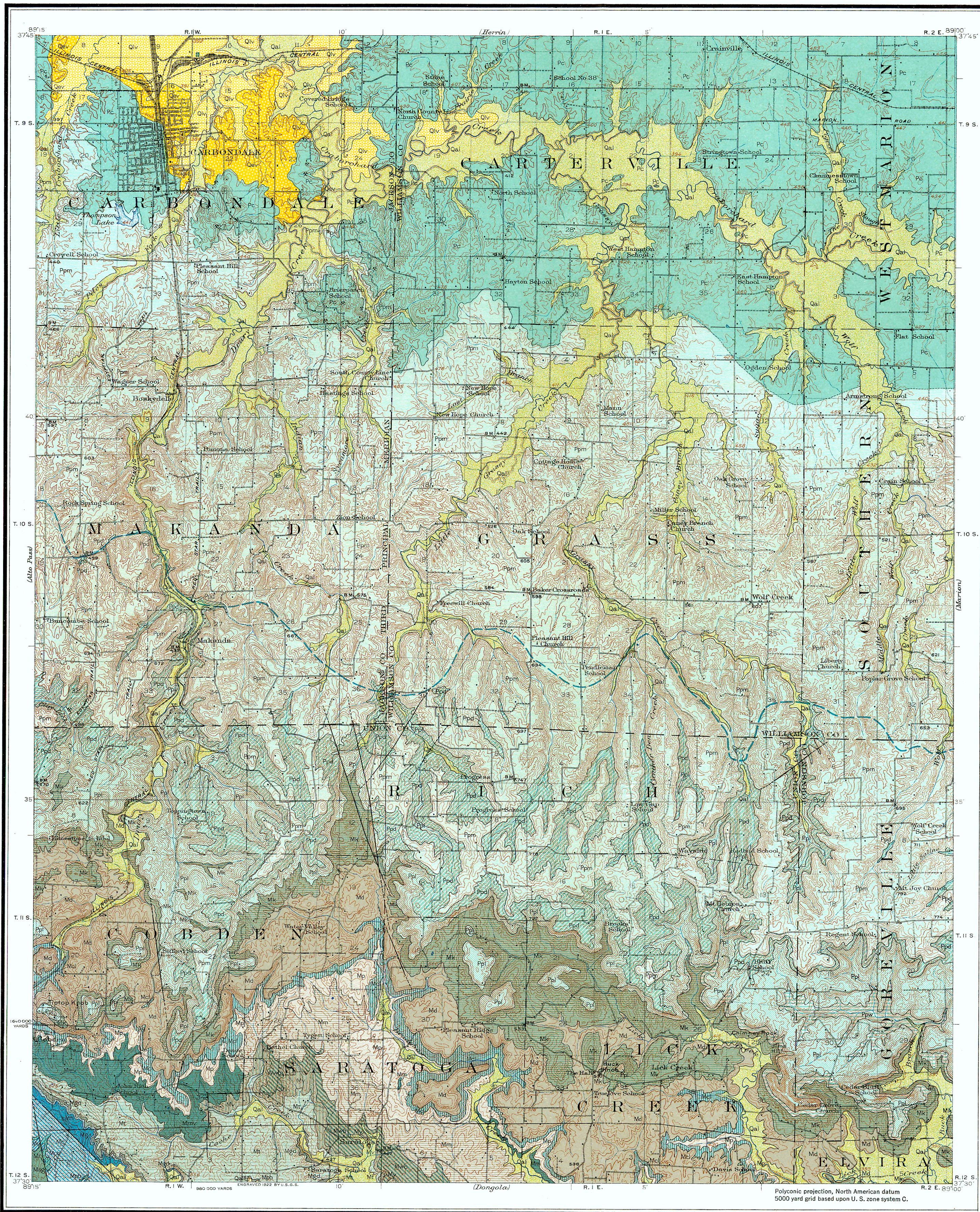
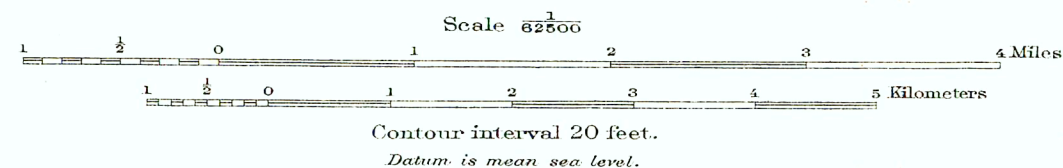


STATE OF ILLINOIS
DEPARTMENT OF REGISTRATION AND EDUCATION
A. M. SHELTON, DIRECTOR
STATE GEOLOGICAL SURVEY DIVISION
EDSON S. BASTIN, THE DIRECTOR OF REGISTRATION AND EDUCATION;
KENDRIC C. BABCOCK OF THE UNIVERSITY OF ILLINOIS, ADVISORS.
M. M. LEIGHTON, CHIEF

CARBONDALE QUADRANGLE
BULL. No. 48, PLATE I



Topographic base map surveyed in cooperation with U. S. Geological Survey



APPROXIMATE MEAN DECLINATION, 1901

ADDED BY C. L. BOLTZHOFF

Geology by J. E. Lamar
Surveyed in 1922 and 1923

AREAL AND ECONOMIC GEOLOGY OF THE CARBONDALE QUADRANGLE