

LEGEND

- Recent**
- Ash and slag heaps
 - Quarry dumps
 - "Spoil" banks
(Dolomite excavated to make the Chicago Drainage Canal)
 - Alluvium
(Along stream courses and in depressions where it consists largely of mud)
 - Outwash deposits of sand and gravel
(Locally in terraces; includes the Joliet and Plainfield outwash plains, also some pre-Rockdale and pre-Valparaiso outwash)
 - Valparaiso moraine
(Similar in constitution to the Minooka moraine, but is distinguished by its greater thickness of drift and greater variability in character; in places displays typical "knob-and-hill" topography)
 - Rockdale drift
(Similar in constitution to the Minooka moraine; characterized by gentle undulations and low hills; and shallow undrained depressions)
 - Minooka ground moraine
(Bluish colorless clay, generally gritty, but locally free from stones; upper 5 to 10 feet entirely leached; yellow in the top 10 feet due to oxidation; characterized by smooth topography)
 - Minooka moraine
(Relatively pure clay, with few scattered pebbles, leached and oxidized in upper portion; in places very gently undulating)
 - Kame-like knobs
(Largely sand and gravel, poorly assorted)
 - Esker-like ridges
(Poorly stratified sand and gravel)
- Pleistocene**
- Late Wisconsin**
- Niagaran**
- Silurian**
- Alexandrian**

- Niagaran dolomite**
(Medium to heavy-bedded, compact, even textured, subcrystalline, bluish gray dolomite with a few cherty layers; upper portion is buff, lower is very cherty; in places overlain by alluvium less than 10 feet thick. Sn, or by sand and gravel less than 10 feet thick. Sg.)
- Kankakee limestone**
(Medium to heavy-bedded, dense, gray to brownish, micaceous limestone. Locally dolomitized containing *Stricklandinia* near the top; one or more cherty layers at base carry *Platystrophia manniensis*; in places overlain by alluvium less than 10 feet thick. Sn, or by sand and gravel less than 10 feet in thickness. Sg.)
- Edgewood limestone**
(Dense, white dolomitic limestone, weathering pale buff in upper part; contains some chert, which is commonly banded; lower portion is very fossiliferous and consists of hard, dense, gray dolomitic limestone which weathers to a bluish or buff platy rock; in places overlain by sand and gravel less than 10 feet in thickness. Sg.)

Dip and strike of bed rock

Glacial striae

ECONOMIC DATA

Sand or gravel pit

Abandoned gravel pit

Abandoned clay pit

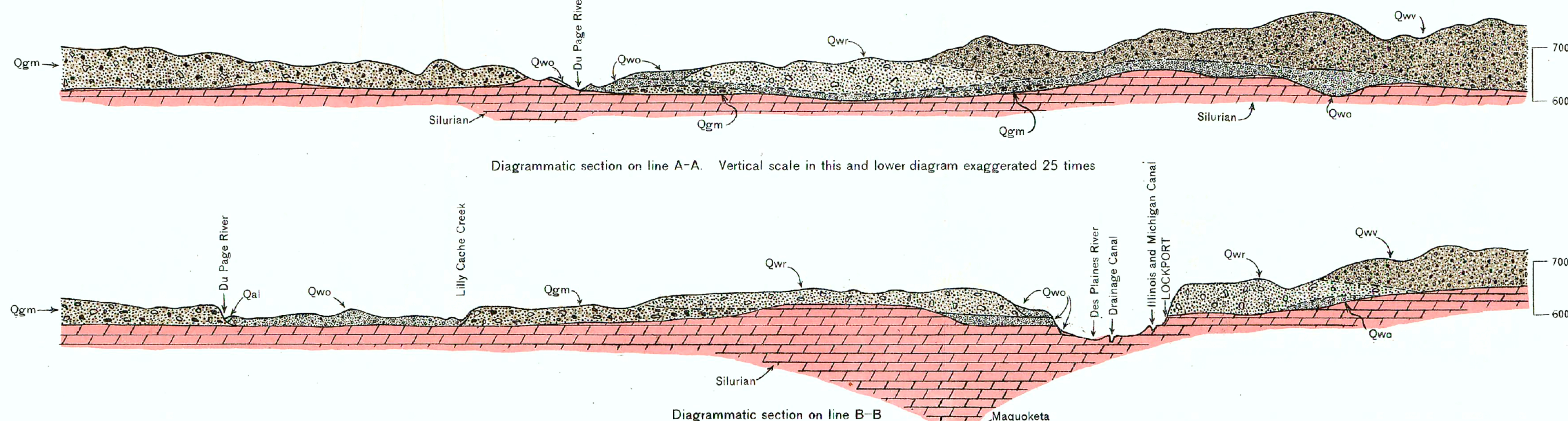
Quarry

Abandoned quarry

Topographic base map surveyed in cooperation with the U. S. Geological Survey

Scale 42500
1 inch = 1 mile
1 centimeter = 1000 feet
Contour interval 10 feet.
Datum is mean sea level.

Geology by D. J. Fisher
Surveyed in 1921



ECONOMIC AND SURFICIAL GEOLOGY OF THE JOLIET QUADRANGLE