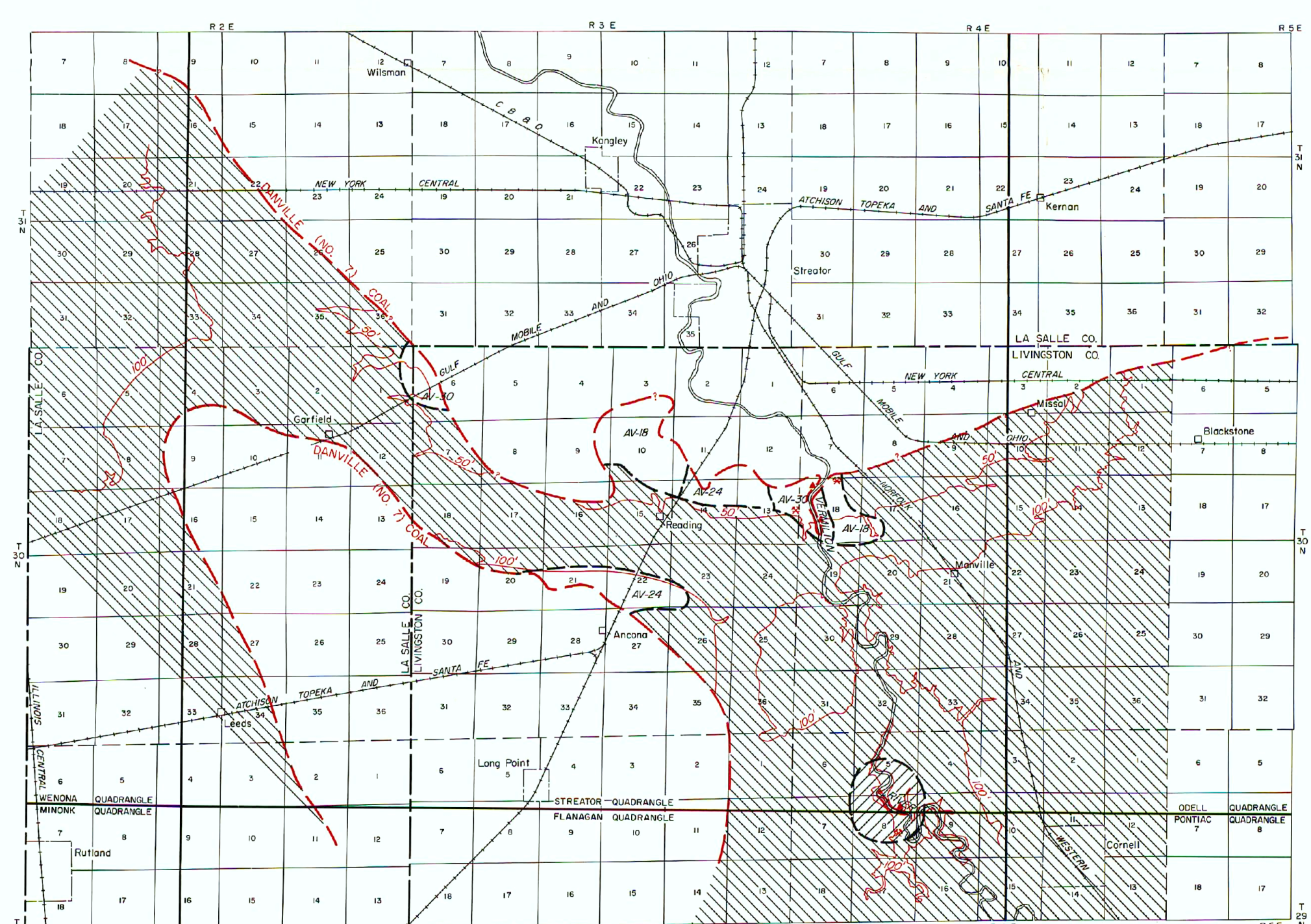


A. COLCHESTER (NO. 2) AND HERRIN (NO. 6) COALS

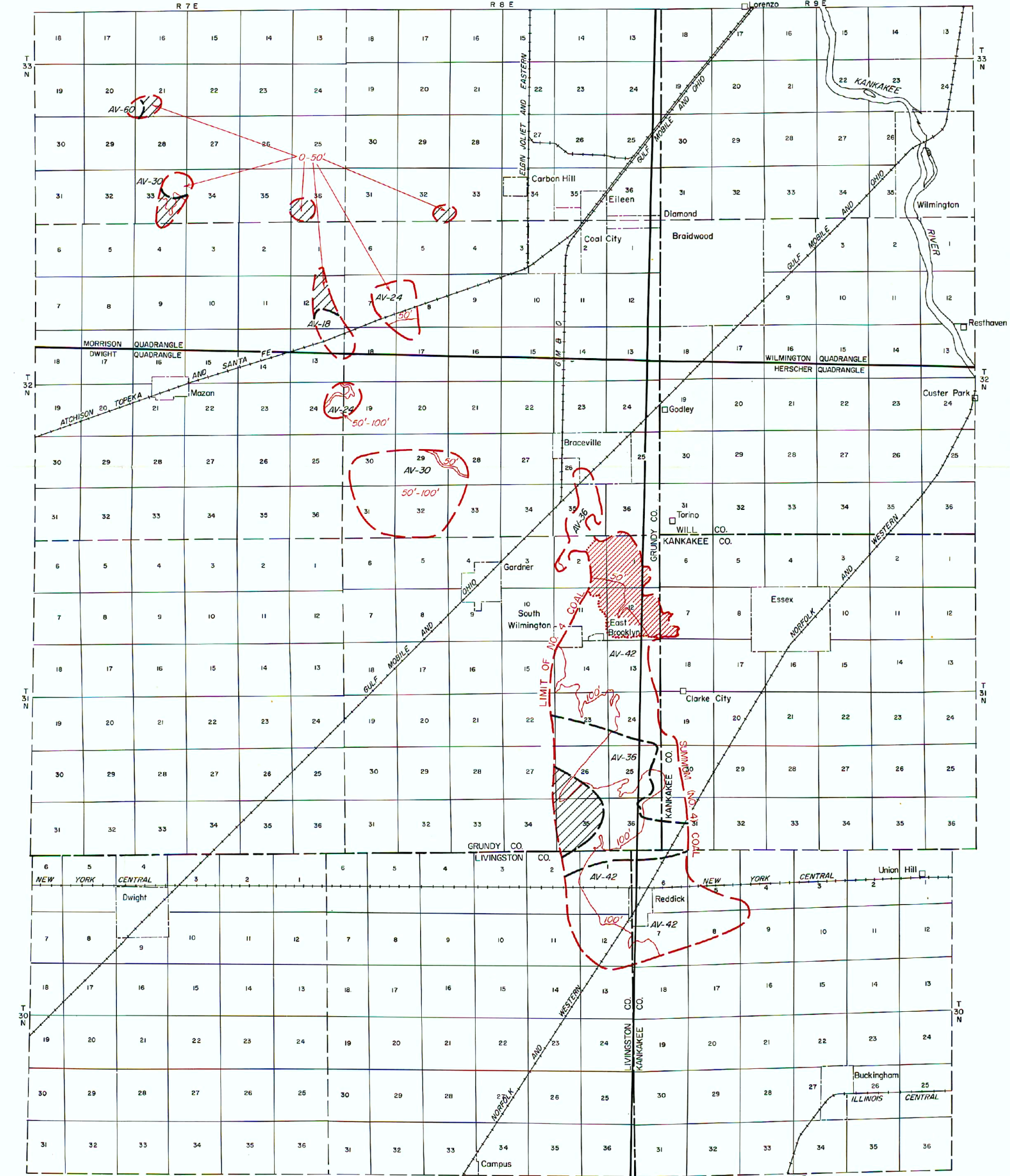
- EXPLANATION
- Approximate coal outcrop line and coal bed name
 - - - Inferred coal outcrop line
 - - - Overburden thickness line
 - Mines-out area underground
 - Approximate boundary of mines-out area
 - Mines out by stripping
 - Boundary between thickness or reliability categories
 - + Axis of LaSalle anticline
 - No coal thickness data
 - Coal less than 18 inches thick
 - AV-24 Average thickness of coal in acres, Class I primary reserves
 - AV-24.5 Average thickness of coal in acres, Class II secondary reserves
 - Local mine area depicted not known
 - Outcrop
- SCALE

STRIPPABLE COAL RESERVES OF ILLINOIS, PART 6

compiled by
W. H. SMITH, J. E. BOUDREAUX, ET AL.
1967



B. DANVILLE (NO. 7) COAL



C. SUMNUM (NO. 41) COAL