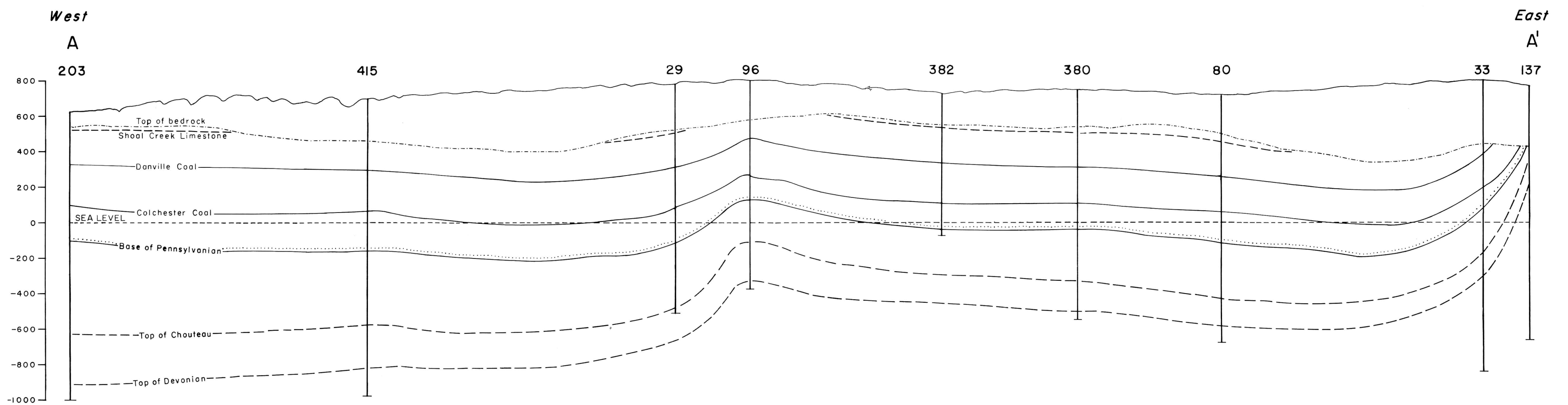


WEST-EAST STRATIGRAPHIC CROSS SECTION ACROSS DE WITT, MC LEAN, AND PIATT COUNTIES, ILLINOIS



WEST-EAST STRUCTURAL CROSS SECTION ACROSS DE WITT, MC LEAN, AND PIATT COUNTIES, ILLINOIS

KENNETH E. CLEGG