

STATE OF ILLINOIS
William G. Stratton, Governor
DEPARTMENT OF REGISTRATION AND EDUCATION
Vera M. Binks, Director

DIVISION OF THE
STATE GEOLOGICAL SURVEY

John C. Frye, Chief
URBANA

ILLINOIS PETROLEUM NO. 71

OIL AND GAS DEVELOPMENT IN ILLINOIS
DURING 1953

By
ALFRED H. BELL and VIRGINIA KLINE

Reprinted From

Statistics of Oil and Gas Development and Production Covering 1953

American Institute of Mining and Metallurgical Engineers



PRINTED BY AUTHORITY OF THE STATE OF ILLINOIS
URBANA, ILLINOIS

1954

FOOTNOTES TO COLUMN HEADINGS

TABLE 1-A

a All fields to be listed alphabetically, and if by counties, the latter also in alphabetical order.

b Use as many numbered lines as necessary to list in order of increasing depth each reservoir productive of oil, gas, or condensate. In multi-reservoir fields the (upper) line on which the field name is placed should reflect, in certain columns, the totals of the separate reservoirs listed below it. Show name of producing formation, and show its age by abbreviation as follows: Cam, Cambrian; Ord, Ordovician; Sil, Silurian; Dev, Devonian; Mis, Mississippian; MisL, Lower Mississippian; MisU, Upper Mississippian; Pen, Pennsylvanian; Per, Permian; Tri, Triassic; Jur, Jurassic; CreL, Lower Cretaceous; CreU, Upper Cretaceous; Eoc, Eocene; Olig, Oligocene; Mio, Miocene; Pli, Pliocene. Show depth to top of producing zone or reservoir.

c Include all original completions, but exclude workovers or wells deepened or plugged back. *Abandoned* refers only to wells abandoned after having produced oil, gas or condensate and is not to include wells abandoned without having secured production.

d Show weighted average gravity A.P.I. as oil is delivered to the pipe lines and percentage of sulphur, if any, in the oil. Where oils from more than one reservoir are commingled and delivered into the pipe line at a gravity of 26 to 26.9, show as 26°, etc.

e Show character of formation by code letter as follows: A, anhydrite; C, chalk; Cg, conglomerate; Ch, chert; CR, cap rock; D, dolomite; Da, arkosic dolomite; Gw, granite wash; Sh, shale; L, limestone; LS, limestone, sandy; OL, oolitic limestone; S, sandstone.

f Figures represent ratio of pore space to total volume of net reservoir rock expressed in per cent. P indicates reservoir rock is of porous type, but ratio is not known by the author. C indi-

cates that the reservoir rock is of cavernous type; and F, fissure type.

g Show actual average thickness that is producing or known to be productive. If, for example, average thickness of productive zone above water level is 50 feet, show 50 feet, even though wells are completed in only upper 10 or 15 feet of zone.

h A, anticlinal; AF, anticlinal with faulting as important factor; Af, anticlinal with faulting as minor factor; AM, accumulation due to both anticlinal and monocline structure; D, dome; DS, salt dome; H, strata are horizontal or nearly horizontal; MC, monocline with accumulation due to change in character of stratum; MF, monocline-fault; MI, monocline with accumulation against igneous barrier; ML, monocline-lense; MU, monocline-unconformity; MP, monocline with accumulation due to sealing at outcrop by asphalt; N, nose; S, syncline; SL, shoreline; T, terrace; TF, terrace with faulting as important factor.

i Show name of deepest stratigraphic zone tested and total depth of well that tested such zone, whether it is deepest well in field or not.

x Correct entry not determinable.

Footnotes for Table 3 are identical to those for Table 1-A with the exceptions of "C" and "D." In Table 3 "C" is the volume of gas produced from the field and not returned to the reservoir. Indicate measurement pressure base in special footnote, or use standard measurement base for state concerned. Also, in Table 3, "D" includes all original completions, but excludes workovers or wells deepened or plugged back. *Abandoned* refers only to wells abandoned after having produced oil, gas or condensate and is not to include wells abandoned without having secured production.

ILLINOIS

By ALFRED H. BELL* and VIRGINIA KLINE**

PRODUCTION AND ECONOMIC DATA

In 1953, Illinois produced 59,025,000 bbls of oil,^{3/} as compared with 60,071,000 bbls in 1952, a decrease of 1.7 per cent, or approximately one week's production at the present rate. Illinois' rank dropped from seventh to eighth among the states. Daily average production by months was as follows:

MONTH	BARRELS	MONTH	BARRELS
January	161,000	July	160,000
February	165,000	August	157,000
March	159,000	September	162,000
April	162,000	October	162,000
May	156,000	November	164,000
June	161,000	December	171,000

Drilling operations during 1953 were unusually successful, as about 36 per cent more producing wells were completed in 1953 than in 1952. The percentage of successful well completions during the first eight months of 1953 was approximately the same as for the corresponding months in 1952. During the last four months of 1953, however, the percentage of successful completions was notably higher than for the corresponding period in 1952. The daily average production for Illinois also shows a notable increase in the latter part of 1953 which should continue into 1954.

On June 15 the price of most crude oil in Illinois was increased from \$2.77 bbl to \$3.02, although small amounts sold at slightly higher or lower prices. The value (at the wells) of the crude oil produced in Illinois in 1953 was about \$171,586,000.

DRILLING AND DEVELOPMENT

A total of 2,161^{1/} wells were drilled for oil and gas in Illinois in 1953, an increase of 84 wells over 1952. Probably an important factor causing the increased drilling was the unusually high percentage of successful well completions. Of the 2,161 wells completed during 1953, 1,068 were oil wells, five gas wells, 628 dry holes in pools, and 460 unsuccessful wildcats. Comparable figures for 1952 show only 802 oil wells, 17 gas wells, 667 dry holes in pools, and 591 unsuccessful wildcats. Producing wells made up about 50 per cent of all completions for 1953 (as compared with only 38 per cent in 1952) and 62

per cent of all pool wells (an increase of 10 per cent over 1952).

An important development of 1953 was the discovery that fracture treatment could be used successfully on some of the sands producing in the State, most notably on the Aux Vases formation in areas where it is characteristically a dense finegrained sandstone. Fracture treatment had been tried before 1953, but only to a minor extent. Early in 1953 it was tried on Aux Vases sandstone wells near Fairfield with such satisfactory results that over 80 per cent of all Aux Vases wells drilled during the year were treated immediately upon completion. At least one well was treated in every sand in which a well was completed, and most of the limestones were given at least one experimental fracture treatment. More than half of the producing wells completed in 1953 were treated during completion, and others were treated later. Earliest results indicated that sandstones responded better than limestones. In December, however, the discovery well of the Blackland pool, a small Silurian well completed in July 1953, was given an exceptionally large "fast fracture" treatment which increased daily production from four or five bbls to about 350 bbls. Further testing on limestones may show results as satisfactory as those obtained on sandstones if proper techniques can be developed.

By fracture treatment of sandstones it is possible to make commercial wells of some wells which could not otherwise be operated profitably. As a result, 1953 showed considerable drilling of edge wells and development of pools which had no recent drilling. Wildcat drilling was much below that in previous years.

Wells were drilled for oil or gas in 47 counties during 1953, with producing wells completed in 31 counties. More than half of the wells drilled were located in six counties: Wayne, White, Marion, Clay, Edwards, and Wabash. More than half of the producing wells were located in the same six counties. There were more producing wells in Wayne County than there were total completions in any other county, a majority of them being fracture-treated Aux Vases wells in the Clay City Consolidated pool. A total of 228 producing wells were completed in Clay City Consolidated, the other most active pools being New Harmony Consolidated with 50 oil wells, Herald Consolidated with 43, and Dix with 39.

The average depth of all wells drilled for oil and gas in Illinois in 1953 was 2,515 ft; the average for producing wells was 2,600 ft.

In fields discovered since Jan. 1, 1937, there were 18,399 wells producing oil or gas at the end of 1953; in older fields the number was approximately 9,026, or a total for the state of 27,425 wells producing at the end of 1953.

EXPLORATORY DRILLING AND DISCOVERIES

Wildcat wells were drilled in all of the 47 counties in which oil and gas wells were drilled, and new pools were discovered in 17 counties.

Of the 2,161 wells drilled, 533, or about 25 per cent, were wildcats, as compared with 32 per cent wildcat completions for 1952. The 169 wildcats drilled more than two miles from production discovered 11 new pools, 6.5 per cent successful. Wildcats drilled between one-half mile and two miles from production, 354 in number, discovered 12 new pools and 40 extensions to pools, 14.7 per cent successful. Four other new pools and seven extensions to pools were

* Member, A. I. M. E.

** Oil and Gas Division, Illinois State Geological Survey, Urbana, Illinois.

^{3/} Illinois production figures from Illinois Basin Scout Association monthly reports which are based on pipeline runs.

^{1/} Well completion figures given herein are based on reports received through the Illinois Basin Scout Association. An undetermined number of additional wells were completed in the old fields of Clark, Crawford, Lawrence, and adjoining counties, for the most part in water-flood areas.

ALFRED H. BELL AND VIRGINIA KLINE

discovered by working over wells which had been completed as dry holes.

There were 26 new oil pools and one new gas pool (Table IIA, Fig. 1), 47 extensions to pools (Table IIB), and 13 new pays in pools (Table IIC) completed during 1953. Two of the new oil pools, Albion West and Amity South, were abandoned before the end of the year. Irvington North is the largest of the new pools discovered in 1953, with 13 wells at the end of the year. Patoka South had 12 wells and Raleigh seven. Most of the other new pools appear to be small.

Most of the new pools were in the deep part of the basin. Those located farthest from production were Melrose and Melrose South on the northeast, Decatur and Blackland on the north, and Prentice on the northwest.

Four new pools, all of them apparently minor, produce from the Pennsylvanian: Melrose and Melrose South oil pools, Dudley West gas pool, and Prentice, with one oil well and one gas well.

The two northern pools, Blackland and Decatur in Macon County, produce from the Silurian or Devonian. At the end of the year a number of wildcat wells were drilling in the vicinity of these two pools.

One new Trenton pool was discovered, Posen North in Washington County. All of the other new pools produce from the Mississippian, and all of the new pays were Mississippian in age.

A generalized geologic column for the southern Illinois oil region, indicating principal producing strata, is shown in Fig. 3.

Unsuccessful deep tests were made in 12 pools. The Shakopee formation (Ordovician) was tested in two Silurian-Devonian pools, Waverly in Morgan County and Blackland. Trenton tests were made in the Woodlawn pool in Jefferson County and the Dubois pool in Washington County. Eight pools had unsuccessful Devonian or Silurian tests: Ayers in Bond County, Clay City West and Iola Consolidated in Clay County, Flat Rock and Bellair in Crawford County, Dudley in Edgar County, Roaches North in Jefferson County, Tamaroa in Perry County, and Olney South in Richland County.

A selected list of important unsuccessful wildcats and deep tests is given in Table IID.

Geophysical exploration during the year included use of seismograph, gravity meter, and magnetometer. The number of geophysical and core testing parties operating throughout the year, by months and methods, is given in Table VII.

PRODUCTIVE ACREAGE

The area of proved production, including abandoned pools, in Illinois at the end of 1953 was 434,100 surface acres for oil and 20,185 for gas. Of this, 321,070 oil acres and 8,540 gas acres were in pools discovered since 1936. During 1953, 320 gas acres were added by five wells, but none of them are marketing gas. In pools discovered since 1936, about 10,000 acres were added in 1953, either by new pools discovered during the year or by extensions to older pools.

ESTIMATED PETROLEUM RESERVES

The Illinois Geological Survey estimates that on Jan. 1, 1954, oil reserves in Illinois that can be produced from wells now in existence by methods in use in each area total 681.9 million bbls. This represents an increase of 14.3 million bbls from the estimate for Jan. 1, 1953, and the factors in this change are shown in the following table:

	MILLIONS OF BBLS
Estimated reserves, Jan. 1, 1953	667.6
Withdrawal by 1953 production	59.1
	<u>608.5</u>
Added by new drilling in 1953	47.2
	<u>655.7</u>
Added by upward revision	26.2
Estimated reserves, Jan. 1, 1954	681.9

The 1,156 producing oil wells, including workover wells, that were completed in 1953 added an estimated oil reserve of 47.2

million bbls, or an average of about 40,830 bbls per well. This compares with an average of about 28,800 bbls a well during 1952 (24.9 million bbls for 867 wells). This increase in the per well averages is largely due to the proportionately greater number of Aux Vases completions during the year.

Of the 47.2 million bbls of reserves added by the 1953 drilling, it is estimated that 8 per cent is in Pennsylvanian sandstones, 85.5 per cent in Mississippian sandstones and limestones, and 6.3 per cent in Devonian-Silurian limestones. New reserves accredited to the Ordovician limestone are negligible, being less than 2/10 of 1 per cent.

The most important pay zones for which new reserves were added by drilling in 1953 are the Aux Vases sandstone with 45 per cent of the new reserves, the Ste. Genevieve limestone with 24 per cent, and the Cypress with 10 per cent. New reserves added during 1953 for the Pennsylvanian sands were 8 per cent and for the Devonian-Silurian were 6.3 per cent. These compare with 1 per cent and 13 per cent additions respectively during 1952.

GAS AND GAS PRODUCTS

An estimated 35 billion cu ft of solution gas was produced from Illinois oil wells during 1953, and somewhat less than a quarter billion cu ft of gas was produced from gas wells in oil fields, either in gas caps or in separate reservoirs in the oil areas. The production of gas from Illinois gas fields was relatively insignificant, amounting to only some 39 million cu ft during 1953.

Most of the 272 million cu ft of Illinois gas marketed during the year, as shown in the table below, came from dry gas wells within oil fields. In addition to the gas marketed, a somewhat smaller amount from gas wells in oil fields was used as fuel on leases.

About 13.8 billion cu ft of solution gas from oil wells was utilized in Illinois natural gasoline plants during 1953. According to statistics compiled by the Survey's Section of Mineral Economics, 3,800,000 bbls of natural gasoline and allied products were extracted from gas processed in the natural gasoline plants of Illinois during 1953. This figure includes production from the new National Petro-Chemical Corp. plant at Tuscola, which acquired its raw gas from areas outside the State and does not, therefore, reflect the true volume of these products from Illinois natural gas. Illinois production for 1952 from natural gas wholly derived in Illinois amounted to 2,790,000 bbls. Data collected by the Illinois Basin Scout Association indicate that approximately five billion cu ft of dry residue gas was returned to the producing formations, with the remainder being used as plant or lease fuel. The amount of plant residue gas flared was insignificant.

In addition to the 13.8 billion cu ft of metered solution gas processed, it is probable that another ten billion cu ft of unmetered gas was used, largely for lease fuel. Probably not more than 20 billion cu ft was flared during the year.

Five new gas wells located in five oil pools in five different counties, and having a combined open flow capacity of 10,220,000 cu ft daily, were completed during 1953. All have been shut in or abandoned because of lack of market.

GAS PRODUCED IN ILLINOIS
AND MARKETED IN 1953

FIELD, COUNTY	MARKET	AMOUNT USED
Harrisburg, Saline	Harrisburg	39,183,000
Herald Consolidated, White - Gallatin	Carmi	<u>232,924,000</u>
		272,107,000

SECONDARY RECOVERY

The development of secondary recovery by water-flooding continued to expand in 1953, according to Paul A. Witherspoon, Head of the Petroleum Engineering Division, Illinois Geological Survey. At

OIL AND GAS DEVELOPMENTS IN ILLINOIS

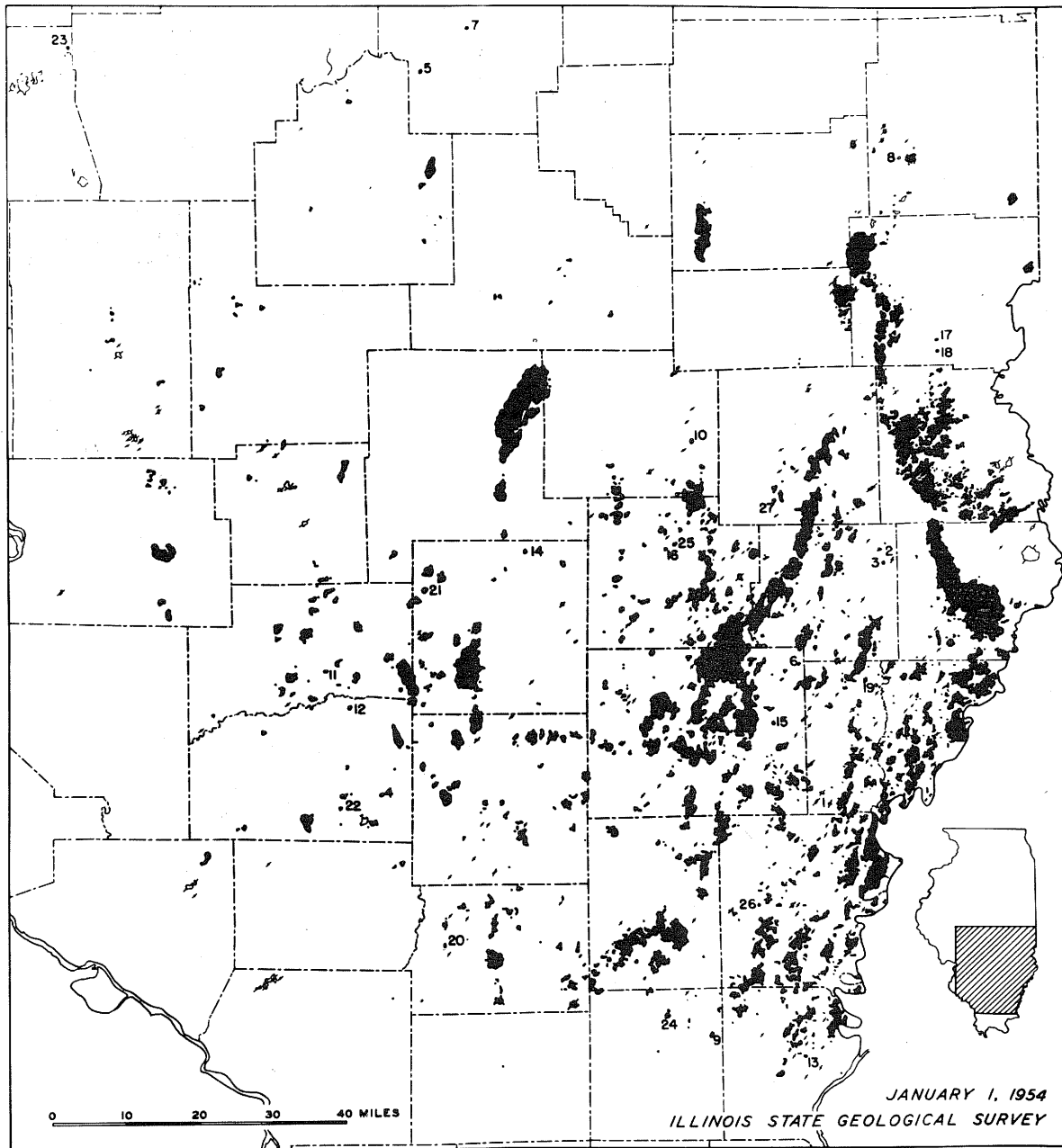


FIG. 1 - OIL AND GAS FIELDS OF ILLINOIS. NUMBERS INDICATE 1953 DISCOVERIES.

- | | |
|------------------------|-------------------------|
| 1. Albion West | 15. Locust Grove South |
| 2. Amity South | 16. Louisville North |
| 3. Amity West | 17. Melrose |
| 4. Ashley | 18. Melrose South |
| 5. Blackland | 19. Mills Prairie North |
| 6. Calhoun South | 20. North City |
| 7. Decatur | 21. Patoka South |
| 8. Dudley West | 22. Posen North |
| 9. Eldorado East | 23. Prentice |
| 10. Elliottstown North | 24. Raleigh |
| 11. Huey South | 25. Toliver South |
| 12. Irvington North | 26. Trumbull West |
| 13. Junction East | 27. Wakefield North |
| 14. Kinmundy North | |

TABLE 1A—ALFRED H. BELL AND VIRGINIA KLINE

LINE NUMBER	FIELD (County)*	PRODUCING INFORMATION NAME AND AGE ^b	YEAR OF DISCOVERY	OIL PRODUCTION			NUMBER OF WELLS ^c			WELLS PROD-UCING DEC. 1953		CHARACTER OF OIL ^b		PRODUCING FORMATION				DEEPEST ZONE TESTED TO END OF 1953	
				AREA PROVED ACRES	TO END OF 1953	DURING 1953	COMPLETED TO END 1953	1953		FLOWING	ARTIFICIAL LIFT	GRAVITY ^d API	SULFUR PER CENT	CHARACTER ^e	DEPTH TO TOP OF PROD. ZONE—FT.	THICKNESS—FT.	STRUCTURE ^e	NAME	DEPTH OF HOLE, FT.
								COMPLETED	ABANDONED										
1	Warrenton - Borton; Edgar - Coles	Unnamed; Pen	1906	150	32,000	1,000	28	3	0	0	5	x	x	S	200	20	ML	Trenton	2,212
2	Westfield; Clark-Coles	Shallow Gas; Pen	1904	10,000	x	x	1,661	2	3	0	187						D	St. Peter	3,009
3		Westfield; MisL		9,050	x	x	208	1	0			x	x	S	280	25	D		
4		Carper; MisL		9,000	x	x	1,450	0	3			x	x	L	335	x	D		
5		Trenton; Ord		10	x	x	1	1	0			x	x	S	875	18	D		
6		Trenton; Ord		300	x	x	19	0	0			0.18	L	2,300	40	D			
7		Trenton; Ord		1	x	x	3	0	0										
8		Siggins; Cumberland Clark	First Siggins; Pen	1906	4,000	x	x	1,039	3	24	0	502						D	Dev
9	Second & Third Siggins; Pen			3,200	x	x	888	3	x			x	x	S	400	25	D		
10		Lower Siggins; Pen		500	x	x	90	0	x			x	x	S	480	x	D		
11	York; Cumberland-Clark Casey; Clark	York; Pen	1907	1,000	x	x	202	0	x			26	x	S	580	40	D	Dev	2,642
12		Upper Gas; Pen		350	x	x	71	0	0	0	7	30	x	S	590	15	AM	Dev	1,717
13	Martinsville; Clark	Upper Gas; Pen	1906	2,100	x	x	442	1	5	0	319						AM		
14		Lower Gas; Pen		300	x	x	42	1	x			32	x	S	265	x	AM		
15		Casey; Pen		400	x	x	82	0	x			30	x	S	310	x	AM		
16		Casey; Pen		1,540	x	x	326	0	x			32	x	S	445	10	AM		
17		Carper; MisL		20	x	x	2	0	0			x	x	S	1,300	50	AM		
18		Shallow; Pen		1,500	x	x	244	0	0	0	128						D	St. Peter	3,411
19		Casey; Pen		35	x	x	7	0	0			x	x	S	255	x	D		
20	Johnson North; Clark	Casey; Pen	1907	1,200	x	x	298	0	x			x	x	S	415	x	AM	Dev	2,260
21		Shallow; Pen		200	x	x	32	0	x			x	x	S	315	x	AM		
22		Casey; Pen		900	x	x	182	0	x			x	x	S	465	x	AM		
23		Upper Partlow; Pen		250	x	x	47	0	0			x	x	S	555	x	AM		
24		Carper; MisL		20	x	x	2	0	0			x	x	S	1,325	x	AM	Dev	2,030
25		Claypool; Pen		2,200	x	x	563	2	97	38	270						AM		
26		Casey; Pen		200	x	x	38	0	x			x	x	S	390	x	AM		
27	Bellair; Crawford-Jasper	Upper Partlow; Pen	1907	1,700	x	x	424	2	x			29	x	S	490	48	AM		
28		Lower Partlow; Pen		850	x	x	175	0	x			29	x	S	600	x	AM		
29		500 ft; Pen		1,520	x	x	491	1	1	45	50						AM	MisL	1,471
30		800 ft; Pen		x	x	x	310	0	1			32	x	S	560	30	AM		
31		900 ft; Pen		x	x	x	66	1	0			x	x	S	815	x	AM		
32		900 ft; Pen		x	x	x	183	0	0			37	x	S	885	x	AM		
33		Aux Vases; MisU		20	x	x	1	0	0			x	x	S	1,200	4	AM		
34	Clark County Division ³ Main; Crawford ^{4,5}	Shallow; Pen	1906	24,070	65,127,000	1,448,000	5,008	9	135	83	1,733						ML	St. Peter	3,411
35		Robinson; Pen		36,100	x	x	7,424	19	85	0	3,584						ML	St. Peter	4,654
36		Bethel; MisU ⁷		340	x	x	72	0	3			x	x	S	510	x	ML		
37		Aux Vases; MisU		34,700	x	x	7,229	16	82			32	x	S	900	20	ML		
38		Oblong; MisL		20	x	x	0	0	0			x	x	S	x	x	ML		
39		Salem; MisL		10	x	x	1	1	0			x	x	S	1,380	5	ML		
40		Devonian; Dev		1,000	x	x	108	0	0			LS	1,335	x	ML				
41		Robinson; Pen		220	x	x	12	2	0			L	1,815	5	ML				
42		Robinson; Pen		30	x	x	2	0	0			L	2,795	11	ML				
43		Robinson; Pen		1,700	x	x	326	9	1	0	160						ML	MisL	2,056
44	Aux Vases; MisU		1,700	x	x	318	3	0			30	x	S	940	25	ML			
45	Robinson; Pen		80	x	x	7	6	1			x	x	S	1,520	10	ML			
46	Robinson; Pen		1	x	x	1	0	0								ML	Mis	2,279	
47	Robinson; Pen		1,560	x	x	194	0	0	0	42	x	x	S	995	25	ML	Pen	1,227	
48	Robinson; Pen		1,240	x	x	256	0	0	0	191	x	x	S	1,000	25	ML	Pen	1,041	
49	Robinson; Pen		1,100	x	x	151	0	0	0	54	30	x	S	910	20	ML	Dev	3,110	
50	Robinson; Pen		2,000	x	x	300	1	0	0	100	23	x	S	935	x	ML	MisL	1,731	
51	Robinson; Pen		4,500	x	x	693	3	3	0	318	32	x	S	930	28	ML	St. Peter	4,654	
52	Crawford County Division ⁹ Lawrence; Lawrence - Crawford	Robinson; Pen	1906	48,300	164,634,000	2,055,000	8,344	32	89	0	4,449						ML	St. Peter	5,190
53		Aux Vases; MisU		26,800	x	x	4,633	23	70	0	2,003						ML	St. Peter	
54		Pennsylvanian; Pen		85	x	x	10	0	x			x	x	S	290	x	A		
55		Bridgeport; Pen		5,060	x	x	1,247	3	x			33	x	S	800	40	A		
56		Buchanan; Pen		2,300	x	x	500	4	x			33	x	S	1,250	15	A		
57		Gas; MisU		1,440	x	x	243	0	x			33	x	S	1,330	15	A		
58		Tar Springs; MisU		10	x	x	1	0	x			x	x	S	1,410	10	A		
59		Hardinsburg; MisU		10	x	x	1	0	x			33	x	S	1,570	10	A		
60		Jackson; MisU		10	x	x	1	0	x			33	x	S	1,360	10	A		
61		Cypress (Kirkwood); MisU		16,350	x	x	3,069	9	x			33	x	S	1,400	30	A		
62		Bethel (Tracey); MisU		4,650	x	x	738	2	x			38	x	S	1,650	20	A		
63		Aux Vases; MisU		20	x	x	4	1	x			33	x	S	1,810	20	A		
64		Lower Ohara; MisL ⁷		10	x	x	0	0	x			x	x	L	1,850	x	AC ¹⁰		
65	Rosciare; MisL		250	x	x	14	1	x			33	x	LS	1,860	10	A			
66	McClosky; MisL		7,400	x	x	1,006	2	x			33	x	L	1,860	10	A			
67	Salem; MisL		10	x	x	1	0	x			x	x	L	1,865	2	A			
68	Bethel; MisU		x	x	x	8	1	x								ML	MisL	2,155	
69	Lawrence County Division ¹¹		27,240	251,454,000	2,654,000	4,690	25	70	0	2,026						ML	St. Peter	5,190	
70	Allendale; Wabash Lawrence		6,000	13,783,000	515,000	791	23	5	0	390						ML	MisL	2,571	
71	Pennsylvanian; Pen		x	x	x	1	0	0			x	x	S	400	x	AM			
72	Pennsylvanian; Pen		x	x	x	3	3	0			x	x	S	650	30	AM			
73	Bridgeport; Pen		x	x	x	13+	0	0			x	x	S	1,070	12	AM			
74	Buchanan; Pen		x	x	x	x	6	0			x	x	S	1,290	15	AM			
75	Biehli; Pen		x	x	x	558	8	0			35	x	S	1,450	20	AM			
76	Jordan; Pen		x	x	x	5	0	0			x	x	S	1,490	10	AM			
77	Waltersburg; MisU		x	x	x	21	0	x			x	x	S	1,540	15	AM			
78	Tar Springs; MisU		x	x	x	11	3	x			x	x	S	1,600	20	AM			
79	Hardinsburg; MisU		x	x	x	1	0	x			x	x	S	1,780	10	AM			
80	Cypress; MisU		x	x	x	8	1	x			36	x	S	1,920	10	AM			
81	Bethel; MisU		x	x	x	70	1	x			37	x	S	2,010	10	AM			
82	Aux Vases; MisU		x	x	x	3	8	x			x	x	S	2,280	12	AM			
83	Lower Ohara; MisL		x	x	x	2	0	x			x	x	L	2,300	10	AM			

TABLE 1A—OIL AND GAS DEVELOPMENTS IN ILLINOIS

LINE NUMBER	FIELD (County) ^a	PRODUCING INFORMATION		YEAR OF DISCOVERY	OIL PRODUCTION		NUMBER OF WELLS:		WELLS PRODUCING DEC. 1953		CHARACTER OF OIL ^b		PRODUCING FORMATION			DEEPEST ZONE TESTED TO END OF 1953				
		NAME AND AGE ^b	AREA PRODUCED ACRES		TO END OF 1953	DURING 1953	COMPLETED TO END 1953	1953		FLOWING	ARTIFICIAL LIFT	GRAVITY ^c API	SULPHUR PER CENT	CHARACTER ^d	DEPTH TO TOP OF PROD. ZONE - FT.	THICKNESS AVG. FT. NET ^e	STRUCTURE ^f	NAME	DEPTH OF HOLE, FT.	
								COMPLETED	ABANDONED											
102	Frogtown; Clinton ¹⁷	Carlyle (Cypress); MisU	1918	300	x	0	14	0	0	0	0	32	x	S	850	7	ML	Trenton	3,290	
103	Ava - Campbell Hill ¹⁸ Jackson	Cypress; MisU	1916	440	x	0	35	0	0	0	0	x	x	S	780	18	A	Trenton	3,582	
104	Colmar - Plymouth; Hancock - McDonough	Hoigs; Dev	1914	2,500	3,884,000	72,000	494	1	5	0	200	38	0.38	S	450	21	AL	Ord	805	
105	Carlinville; Macoupin ¹⁹	Unnamed; Pen	1909	80	x	1,000	8	0	0	0	3	28	x	S	380	x	A	Mis	1,380	
106	Gillespie - Wyen; Macoupin	Unnamed; Pen	1915	45	x	1,000	23	0	0	0	6	30	x	S	650	x	T	Ord	2,560	
107	Collinsville; Madison ²³	Silurian; Sil	1909	40	1,000	0	6	0	0	0	0	x	x	L	1,305	20	ML	St. Peter	2,177	
108	Brown, Junction City, ¹		1910	205	x	6,000	20	1	0	0	6	32	x	S	845	7	MF	Dev	3,405	
109	Langevich-Kuester;	Dykstra - Wilson; Pen		60	x	x	7	0	0	0	0	32	x	S	610	20	MF			
110	Marion	Petro; Pen		30	x	x	4	0	0	0	0	32	x	S	1,660	15	N			
111		Cypress; MisU		115	x	x	9	1	0	0	0	32	x	S			D			
112	Sandoval; Marion		1909	480	5,674,000	40,000	151	0	0	0	16	35	x	S	1,540	20	D	St. Peter	5,023	
113		Bethel; MisU		460	2,705,000	0	123	0	0	0	0	38	0.38	L	2,920	9	R			
114		Devonian; Dev		390	2,969,000	40,000	28	0	0	0	0	30	x	S	720	20	D	MisL	1,760	
115	Wamac; Marion- Clinton - Washington	Petro; Pen	1921	250	578,000	9,000	107	1	0	0	12	30	x	S			D			
116	Litchfield; Montgomery ²⁴	Unnamed; Pen	1879	100	24,000	0	18	0	0	0	0	23	0.24	S	660	x	D	St. Peter	3,000	
117	Waterloo; Monroe ²⁵	Trenton; Ord	1920	230	236,000	0	41	0	0	0	0	30	0.97	L	410	50	A	Pre-Cam	2,768	
118	Jacksonville (Gas); Morgan ^{5, 26}	Gas; Pen, MisL	1910	60	2,000	0	8	0	0	0	0	x	x	LS	330	5	ML	Ord	1,390	
119	Sparta; Randolph ^{5, 28}	Cypress; MisU	1888	20	x	0	2	0	0	0	0	x	x	S	850	7	D	Trenton	3,130	
120	Dupo; St. Clair	Trenton; Ord	1928	1,000	2,746,000	50,000	320	0	24	0	15	33	0.70	L	700	50	A	Ord	1,800	
121	Total of fields discovered prior to January 1, 1937 ²⁹			113,030	514,468,000	7,101,000	21,363	96	329	83	8,943									
122	Ab Lake; Gallatin		1947	40	19,000	0	2	0	0	0	0						M	MisL	2,941	
123		Renault; MisU		40	x	0	2	0	0	0	0	35	x	L	2,735	8	MF			
124		Aux Vases; MisU ⁷		40	x	0	0	0	0	0	0	35	x	S	2,770	9	MF			
125	Ab Lake West; Gallatin		1950	40	5,000	3,000	3	1	1	0	2						M	MisL	2,945	
126		Aux Vases; MisU		20	3,000	2,500	2	1	1	0	0	x	x	S	2,725	6	MC			
127		McClosky; MisL		20	2,000	500	1	0	0	0	0	x	x	L	2,830	2	MC			
128	Aden Consolidated;		1938	2,320	6,805,000	312,000	93	2	0	0	74						A	Dev	5,395	
129	Wayne - Hamilton			1,200	x	x	7	2	0	0	0	35	x	S	3,200	10	A			
130		Aux Vases; MisU		140	x	x	0	0	0	0	0	35	x	L	3,290	7	A			
131		Rostclare; MisL		100	x	x	2	0	0	0	0	35	x	LS	3,320	5	AL			
132		McClosky; MisL		2,300	x	x	73	0	0	0	0	35	x	L	3,350	4	A			
133		Salem; MisL ⁷		80	x	x	0	0	0	0	0	40	x	L	3,735	16	AC			
134							11	0	0	0	0									
135	Aden South; Hamilton		1945	360	351,000	52,000	19	0	0	0	17						A	MisL	3,466	
136		Aux Vases; MisU		80	x	x	2	0	0	0	0	x	x	S	3,245	8	AL			
137		Lower Ohara; MisL ⁷		20	x	x	0	0	0	0	0	x	x	L	3,310	7	AC			
138		Rostclare; MisL		140	x	x	1	0	0	0	0	x	x	LS	3,330	8	AC			
139		McClosky; MisL		320	x	x	8	0	0	0	0	39	x	L	3,395	9	AC			
140							8	0	0	0	0									
141	Akin; Franklin		1942	260	620,000	39,000	15	0	0	0	14						A	MisL	3,515	
142		Cypress; MisU		180	x	x	11	0	0	0	0	33	0.14	S	2,840	10	AL			
143		Aux Vases; MisU		80	x	x	3	0	0	0	0	38	0.12	S	3,120	9	AL			
144		McClosky; MisL ⁷		20	x	x	0	0	0	0	0	x	x	L	3,270	9	AC			
145							1	0	0	0	0									
146	Akin West; Franklin		1948	100	60,000	10,000	6	0	0	0	6						A	MisL	3,436	
147		Cypress; MisU		20	x	x	2	0	0	0	0	x	x	S	2,715	8	AL			
148		Lower Ohara; MisL		20	x	x	0	0	0	0	0	x	x	L	3,050	10	AC			
149		Rostclare; MisL ⁷		20	x	x	0	0	0	0	0	x	x	L	3,080	12	AC			
150		McClosky; MisL		60	x	x	3	0	0	0	0	x	x	L	3,130	4	AC			
151							1	0	0	0	0									
152	Albion Consolidated; Edwards - White		1940	5,100	12,897,000	1,158,000	379	23	5	0	330						AM	Dev	5,185	
153		Mansfield; Pen			x	x	4	0	0	0	0	35	x	S	1,650	5	MF			
154		Bridgeport; Pen		1,500	x	x	19	2	0	0	0	35	0.18	S	1,900	15	MF			
155		Biehli; Pen			x	x	95	0	0	0	0	34	0.18	S	2,000	15	MF			
156		Degonia; MisU ⁷		10	x	x	0	0	0	0	0	35	x	S	2,125	9	MF			
157		Waltersburg; MisU		630	x	x	37	0	0	0	0	35	x	S	2,365	16	AL			
158		Tar Springs; MisU		80	x	x	4	0	0	0	0	37	x	S	2,460	5	AL			
159		Hardinsburg; MisU		60	x	x	3	0	0	0	0	36	x	S	2,635	10	A			
160		Cypress; MisU		330	x	x	27	0	0	0	0	37	x	S	2,860	15	A			
161		Bethel; MisU		330	x	x	19	4	1	0	0	35	x	S	2,960	14	Af			
162		Renault; MisU		100	x	x	1	0	0	0	0	35	x	L	3,000	13	Af			
163		Aux Vases; MisU		750	x	x	45	16	3	0	0	35	x	S	3,045	18	Af			
164		Lower Ohara; MisL		140	x	x	6	1	0	0	0	40	x	L	3,110	5	AC			
165		Rostclare; MisL		40	x	x	2	0	0	0	0	35	x	L	3,130	10	AC			
166		McClosky; MisL		1,600	x	x	80	0	1	0	0	39	x	L	3,200	12	AC			
167							37	0	0	0	0									
168	Albion East; Edwards		1943	580	882,000	42,000	35	2	5	0	24						A	MisL	3,254	
169		Cypress; MisU		120	x	x	7	0	1	0	0	x	x	S	2,800	7	A			
170		Paint Creek; MisU ⁷		10	x	x	0	0	0	0	0	x	x	S	2,910	6	AL			
171		Bethel; MisU		20	x	x	1	0	0	0	0	x	x	S	2,920	6	AL			
172		Renault; MisU		30	x	x	2	0	0	0	0	x	x	LS	2,925	10	AC			
173		Aux Vases; MisU		100	x	x	6	2	0	0	0	39	0.14	S	3,020	17	AL			
174		Lower Ohara; MisL			x	x	6	0	0	0	0	x	x	L	3,100	7	A			
175		Rostclare; MisL		360	x	x	2	0	0	0	0	x	x	L	3,125	7	A			
176		McClosky; MisL			x	x	6	0	2	0	0	x	x	L	3,155	7	A			
177							5	0	2	0	0									
178	Albion West; Edwards ³¹	McClosky; Mis																		

TABLE 1A—ALFRED H. BELL AND VIRGINIA KLINE

LINE NUMBER	FIELD (County) ^a	PRODUCING INFORMATION NAME AND AGE ^b	YEAR OF DISCOVERY	OIL PRODUCTION			NUMBER OF WELLS:		WELLS PRODUCING DEC. 1, 1953		CHARACTER OF OIL ^b		PRODUCING FORMATION			DEEPEST ZONE TESTED TO END OF 1953			
				AREA PROVED ACRES	BARRELS		COMPLETED TO END 1953	1953		FLOWING	ARTIFICIAL LIFT	GRAVITY ^d API	SULPHUR PER CENT	CHARACTER ^e	DEPTH TO TOP OF PROD. ZONE - FEET ^f	THICKNESS AVG. FT. IN ^g	STRUCTURE ^h	NAME	DEPTH OF HOLE, FT.
					TO END OF 1953	DURING 1953		COMPLETED	ABANDONED										
196		Rosiclare; MisL		140	x	x	3	2	0		x	x	LS	3,400	9	AC			
197		McClosky; MisL		1,100	x	x	68	1	3		38	0.17	OL	3,450	15	AC			
198		Salem; MisL		40	x	x	1	0	0		39	x	L	3,785	8	AC			
199							8	5	0										
200	Bartelo East; Clinton*		1950	180	130,000	26,000	9	0	0	0	9						SII	2,788	
201		Devonian; Dev		120	x	x	6	0	0		42	x	L	2,550	7	R			
202		Silurian; Sil		80	x	x	3	0	0				L	2,600	8	R			
203	Bartelo South; Clinton		1942	100	22,000	0	3	0	1	0	1	0.15	L	2,475	3	A	Dev	2,652	
204	Bartelo West; Clinton		1945	140	11,000	3,000	12	3	1	0	7	x	S	960	15	A	Trenton	2,520	
205	Beaucoup; Washington		1951	280	225,000	182,000	14	11	0	0	14							4,192	
206		Devonian; Dev		280	224,000	181,000	13	11	0		x	x	L	3,650	12	A			
207		Trenton; Ord ⁷		20	1,000	1,000	0	0	0		x	x	L	4,095	5	A			
208							1	0	0										
209	Beaucoup South; Washington		1951	200	159,000	105,000	20	5	1	0	18	x	S	1,430	9	AL	Dev	3,122	
210	Beaver Creek; Bond - Clinton		1942	160	153,000	17,000	16	0	0	0	14	34	0.25	S	1,130	6	A	Dev	2,526
211	Beaver Creek North; Bond		1949	40	1,000	100	4	0	2	0	1	x	S	1,115	4	A	Dev	2,556	
212	Beaver Creek South; Clinton		1946	380	210,000	45,000	38	1	0	0	24	x	S	1,140	5	A	Dev	2,539	
213	Belle Prairie; Hamilton		1940	220	543,000	24,000	11	0	0	0	10						MisL	3,580	
214		Aux Vases; MisU ⁷		10	x	x	0	0	0		37	x	S	3,250	8	AL			
215		McClosky; MisL		220	x	x	10	0	0		37	0.12	L	3,420	6	AC			
216							1	0	0										
217	Belle River; Jefferson		1943	200	284,000	10,000	5	0	0	0	3	39	0.50	L	3,085	6	AC	MisL	3,201
218	Bellmont; Wabash		1951	70	49,000	8,000	4	0	0	0	3						M	3,006	
219		Bethel; MisU		10	6,000	2,000	1	0	0		x	x	S	2,650	7	ML			
220		Lower Ohara; MisL		60	43,000	6,000	3	0	0		x	x	L	2,840	7	MC			
221	Beman; Lawrence		1942	470	220,000	8,000	21	0	0	0	12						MisL	2,000	
222		Aux Vases; MisU		30	x	x	1	0	0		x	x	S	1,805	20	AL			
223		Ste. Genevieve; MisL		460	x	x	18	0	0		38	x	L	1,850	7	AC			
224							2	0	0										
225	Beman East; Lawrence		1947	100	96,000	4,000	5	0	0	0	3						MisL	1,907	
226		Aux Vases; MisU		20	x	x	1	0	0		x	x	S	1,805	12	AL			
227		Ste. Genevieve; MisL		90	x	x	3	0	0		x	x	L	1,860	8	AC			
228							1	0	0										
229	Bennington South; Edwards; ³⁴		1944	20	10,000	0	1	0	0	0	0	x	L	3,240	8	MC	MisL	3,420	
230	Benton; Franklin		1941	2,400	28,463,000	2,425,000	243	0	0	0	132						MisL	3,205	
231				20	x	0	0	0	0		x	x	S	1,700	9	AL			
232		Tar Springs; MisU		2,400	x	2,425,000	243	0	0		38	x	S	2,100	10	A			
233	Benton North; Franklin		1941	700	1,493,000	134,000	50	1	0	0	43						MisL	2,906	
234		Cypress; MisU		120	x	x	10	0	0		x	x	S	2,460	18	A			
235		Paint Creek; MisU		140	x	x	7	1	0		x	x	S	2,595	9	A			
236		Bethel; MisU		10	x	x	1	0	0		38	0.15	S	2,600	20	AL			
237		Aux Vases; MisU		100	x	x	3	0	0		37	0.15	S	2,685	10	A			
238		Lower Ohara; MisL		600	x	x	4	0	0		37	0.70	L	2,730	8	A			
239		Rosiclare; MisL			x	x	3	0	0		38	0.15	S	2,775	6	A			
240		McClosky; MisL			x	x	9	0	0		x	x	L	2,800	10	A			
241							13	0	0										
242	Berryville Consolidated; Wabash - Edwards		1943	520	855,000	53,000	18	1	5	0	8						MisL	3,125	
243		Lower Ohara; MisL		100	x	x	4	0	1		x	x	L	2,900	8	MC			
244		Rosiclare; MisL		20	x	x	1	0	0		x	x	L	2,850	12	MC			
245		McClosky; MisL		420	x	x	12	1	4		36	x	L	2,890	10	MC			
246							1	0	0										
247	Bessie; Franklin		1943	40	62,000	5,000	1	0	0	0	1	39	0.15	L	2,895	10	MC	MisL	3,457
248	Bible Grove North; Effingham		1947	130	68,000	6,000	7	0	0	0	4						M	2,999	
249		Cypress; MisU		50	x	2,000	3	0	0		36	x	S	2,535	7	M			
250		Rosiclare; MisL		40	x	0	1	0	0		x	x	LS	2,835	5	ML			
251		McClosky; MisL		60	x	4,000	2	0	0		x	x	L	2,875	5	M			
252							1	0	0										
253	Bible Grove South; Clay		1942	20	85,000	4,000	2	0	0	0	2						M	2,929	
254		Cypress; MisU		10	4,000	1,000	1	0	0		x	x	S	2,500	10	ML			
255		Aux Vases; MisU		10	81,000	4,000	1	0	0		38	x	S	2,750	10	ML			
256	Blackland; Macon		1953	20	1,000	1,000	1	1	0	0	1	x	L	3,910	x	x	Ord	3,780	
257	Black River; White		1952	10	6,000	3,000	1	0	0	0	1	x	S	1,865	6	x	MisL	3,071	
258	Blairstown West; Hamilton		1951	200	279,000	36,000	10	0	0	0	8						MisL	3,507	
259		Rosiclare; MisL ⁷		20	x	x	0	0	0		x	x	L	3,345	6	AC			
260		McClosky; MisL		200	x	x	9	0	0		x	x	L	3,405	8	A			
261							1	0	0										
262	Bogota; Jasper		1943	260	440,000	9,000	8	0	0	0	7						A	3,234	
263		Rosiclare; MisL		20	2,000	1,000	1	0	0		x	x	L	3,090	4	AC			
264		McClosky; MisL		240	438,000	8,000	7	0	0		35	x	L	3,110	7	A			
265	Bogota North; Jasper ³⁵		1949	10	0	0	1	0	0	0	0	x	L	3,080	3	x	MisL	3,150	
266	Bogota South; Jasper		1944	480	347,000	39,000	23	0	0	0	18	35	L	3,075	8	ML	MisL	3,182	
267	Bone Gap Consolidated; Edwards		1941	1,200	1,622,000	143,000	55	0	2	0	33						MisL	3,350	
268				10	1,000	1,000	1	0	0		x	x	S	2,110	8	AL			
269		Waltersburg; MisU		150	x	x	15	0	1		35	x	S	2,310	20	A			
270		Cypress; MisU		60	231,000	7,000	6	0	1		x	x	S	2,710	10	A			
271		Bethel; MisU		20	x	x	2	0	0		x	x	S	2,880	14	AL			
272		Aux Vases; MisU		10	10,000	0	1	0	0		x	x	S	3,020	9	AL			
273		Lower Ohara; MisL		80	x	x	2	0	0		x	x	L	3,040	5	AC			
274		Rosiclare; MisL		80	x	x	2	0	0		x	x	L	3,045	5	AC			
275		McClosky; MisL		800	x	x	24	0	0		41	0.33	L	3,200	6	AC			
276							2	0	0										
277	Bone Gap East; Edwards		1951	40	10,000	2,00													

TABLE 1A—OIL AND GAS DEVELOPMENTS IN ILLINOIS

LINE NUMBER	FIELD (County) ^a	PRODUCING INFORMATION NAME AND AGE ^b	YEAR OF DISCOVERY	OIL PRODUCTION		NUMBER OF WELLS ^c		WELLS PROD- UCING DEC. 1953		CHARACTER OF OIL ^d		PRODUCING FORMATION			DEEPEST ZONE TESTED ^e TO END OF 1953				
				BARRELS		COMPLETED TO END 1953	1953		FLOWING	ARTIFICIAL LIFT	GRAVITY ^f API	SULPHUR PER CENT	CHARACTER ^g	DEPTH TO TOP OF PROD. ZONE—H.	THICKNESS AVG. FT. NET ^h	STRUCTURE ⁱ	NAME	DEPTH OF HOLE, FT.	
				TO END OF 1953	DURING 1953		COMPLETED	ABANDONED											
294		Aux Vases; MisU		10	x	0	1	0	0		x	x	S	2,965	7	AL			
295		Lower Ohara; MisL		40	x	x	2	0	0		x	x	L	2,965	4	AC			
296		Rosiclare; MisL ⁷		20	x	x	0	0	0		x	x	L	2,975	3	AC			
297		McClosky; MisL		600	x	x	27	0	0		35	x	L	3,000	6	A			
298		1					9	0	0										
299	Browns East; Wabash	Cypress; MisU	1946	500	1,913,000	256,000	50	0	0	0	37	36	x	S	2,570	13	ML	MisL	3,113
300	Browns South; Edwards		1943	20	12,000	1,000	2	0	0	0	1					N	MisL	3,095	
301		Bethel; MisU		20	x	x	1	0	0		x	x	S	2,850	15	NL			
302		Aux Vases; MisU ⁷		10	x	x	0	0	0		x	x	S	2,955	5	NL			
303		1					1	0	0										
304	Bungay Consolidated; Hamilton		1941	2,900	7,391,000	542,000	179	8	1	0	150					A	MisL	3,565	
305		Renault; MisU		2,760	x	x	7	5	0		x	x	S	3,270	10	AL			
306		Aux Vases; MisU			x	x	152	2	1		37	0.24	S	3,285	15	AL			
307		Lower Ohara; MisL			x	x	2	1	0		x	x	L	3,335	8	AC			
308		Rosiclare; MisL		400	x	x	2	0	0		x	x	L	3,400	8	AC			
309		McClosky; MisL			x	x	10	0	0		37	0.24	L	3,425	8	AC			
310		1					6	0	0										
311	Burnt Prairie South; White	McClosky; MisL	1947	20	9,000	1,000	1	0	0	0	1	37	x	L	3,415	6	x	MisL	3,552
312	Calhoun Central;		1950	40	500	0	2	0	0	0	0				M	MisL	3,335		
313	Richland ³⁷	Rosiclare; MisL		20	x	0	1	0	0		x	x	L	3,245	6	MC			
314		McClosky; MisL		20	x	0	1	0	0		x	x	L	3,280	3	MC			
315	Calhoun Consolidated; Richland - Wayne		1944	2,400	2,943,000	204,000	100	1	0	0	72				A	MisL	3,900		
316		Lower Ohara; MisL			x	x	19	0	0		x	x	OL	3,140	9	A			
317		Rosiclare; MisL			x	x	11	0	0		x	x	OL	3,160	6	A			
318		McClosky; MisL			x	x	56	1	0		38	0.15	OL	3,180	10	A			
319		1					14	0	0										
320	Calhoun East; Richland	McClosky; MisL	1950	160	188,000	9,000	5	0	0	0	5	39	x	L	3,265	5	MC	MisL	3,380
321	Calhoun North; Richland		1944	40	49,000	3,000	2	0	0	0	1				A	MisL	3,280		
322		Rosiclare; MisL ⁷		20	x	x	0	0	0		x	x	LS	3,155	10	A			
323		McClosky; MisL		40	x	x	1	0	0		x	x	OL	3,170	11	A			
324		1					1	0	0										
325	Calhoun South; Richland	Aux Vases; MisU	1953	10	1,000	1,000	1	1	0	0	1	x	x	S	3,175	5	x	MisL	3,350
326	Cantrell Consolidated; Hamilton ³⁸		1949	560	1,315,000	240,000	51	9	1	0	41				A	MisL	3,481		
327		Aux Vases; MisU		420	x	x	43	7	1		x	x	S	3,150	20	AL			
328		Lower Ohara; MisL			x	x	5	1	0		x	x	L	3,180	9	AC			
329		Rosiclare; MisL		160	x	x	1	0	0		x	x	L	3,200	3	AC			
330		McClosky; MisL			x	x	2	1	0		x	x	L	3,325	4	AC			
331	Cantrell North; Hamilton	Aux Vases; MisU	1951	80	255,000	60,000	8	1	0	0	8	x	x	S	3,270	10	AL	MisL	3,521
332	Carlinville North; Macoupin ³⁹	Pottsville; Pen	1941	120	1,000	0	6	0	1	0	0	20	0.35	S	440	10	x	Pen	562
333	Carlyle North; Clinton	Bethel; MisU	1950	460	291,000	62,000	39	1	0	0	35	36	x	S	1,150	6	AL	Dev	2,558
334	Carlyle South; Clinton ³⁹	Cypress; MisU	1951	20	2,000	1,000	2	0	2	0	0	x	x	S	1,075	4	x	MisU	1,194
335	Carmi; White ⁴⁰		1939	80	25,000	10,000	6	0	0	0	2				M	MisU	3,282		
336		Cypress; MisU		30	x	10,000	3	0	0		x	x	S	2,800	15	ML			
337		Aux Vases; MisU		10	x	0	1	0	0		x	x	S	3,145	8	ML			
338		McClosky; MisL		40	x	0	2	0	0		x	x	OL	3,150	6	MC			
339	Carmi North; White		1942	80	166,000	7,000	5	0	0	0	4				A	MisL	3,452		
340		Cypress; MisU		20	x	x	1	0	0		38	x	S	2,940	13	Af			
341		Aux Vases; MisU		70	x	x	4	0	0		37	0.14	S	3,220	14	Af			
342	Centerville; White		1940	200	412,000	32,000	10	2	0	0	9				N	MisL	3,919		
343		Aux Vases; MisU ⁷		10	x	x	0	0	0		x	x	S	3,240	6	NL			
344		Lower Ohara; MisL		100	x	x	4	1	0		x	x	L	3,310	10	NC			
345		Rosiclare; MisL ⁷		20	x	x	0	0	0		x	x	L	x	x	NC			
346		McClosky; MisL		120	x	x	5	0	0		40	0.17	OL	3,370	4	NC			
347		1					1	1	0										
348	Centerville East; White		1941	1,300	3,239,000	369,000	103	15	0	0	90				A	MisL	3,368		
349		Palestine; MisU		20	x	x	2	0	0		x	x	S	2,225	3	AL ^f			
350		Tar Springs; MisU		380	x	x	28	0	0		37	0.20	S	2,500	24	AL ^f			
351		Hardinsburg; MisU		10	x	x	1	0	0		x	x	S	2,615	22	AL ^f			
352		Cypress; MisU		320	x	x	20	9	0		36	x	S	2,915	6	AL ^f			
353		Bethel; MisU		180	x	x	9	1	0		36	x	S	2,990	20	AL ^f			
354		Aux Vases; MisU		320	x	x	24	1	0		36	x	S	3,075	21	AL ^f			
355		Lower Ohara; MisL		40	x	x	1	1	0		36	x	OL	3,175	5	AC ^f			
356		Rosiclare; MisL ⁷		20	x	x	0	0	0		x	x	LS	3,185	6	AC ^f			
357		McClosky; MisL		240	x	x	9	0	0		37	x	OL	3,230	7	AC ^f			
358		1					9	3	0										
359	Centerville North; White ⁴¹	Bethel; MisU	1947	10	0	0	1	0	0	0	0	x	x	S	2,990	13	ML	MisL	3,290
360	Centralia; Clinton - Marion		1937	3,360	37,691,000	705,000	995	0	7	0	450				A	Ord	4,170		
361		Pennsylvanian; Pen ⁷		10	x	x	0	0	0		x	x	S	690	x	AL			
362		Cypress; MisU			x	x	50	0	x		36	0.20	S	1,200	12	A			
363		Bethel; MisU		1,400	x	x	566	0	x		37	0.17	S	1,355	20	A			
364		Devonian; Dev		2,500	21,365,000	206,000	319	0	x		40	0.38	L	2,870	9	A			
365		Trenton; Ord		1,400	2,125,000	140,000	59	0	x		40	x	L	3,930	22	A			
366		1					1	0	x										
367	Centralia West; Clinton	Bethel; MisU	1940	90	377,000	3,000	9	0	0	0	2	38	0.17	S	1,440	9	N	MisU	1,634
368	Christopher; Franklin ⁴²	Lower Ohara; MisL	1951	20	0	0	1	0	0	0	0	x	x	L	2,675	8	x	MisL	2,822
369	Cisne North; Wayne		1942	220	152,000	15,000	11	0	0	0	5				M	MisL	3,297		
370		Aux Vases; MisU		40	x	x	3	0	0		38	x	S	3,050	15	ML			
371		McClosky; MisL		200	x	x	7	0	0		37	x	L	3,170	6	MC			
372		1					1	0	0										
373	Clarkeburg; Shelby	Bethel; MisU	1946	20	16,000	2,000	2	0	0	0	1	34	x	S	1,770	6	A	MisL	2,454
374	Clay City Consolidated;		1937	75,000	158,834,000	8,367,000	3,400	228	68	0	2,504				A	St. Peter	7,205		
375	Clay - Wayne			10	x	x	1	0	0		x	x	S	2,175	6	AL			
376	Richland - Jasper ⁴⁴	Waltersburg; MisU		160	x	x	8	0	0		37	x	S	2,560	15	AL			
377		Tar Springs; MisU		5,200	x	x	264	9	4		34	x	S	2,635	15	AL			
378		Cypress; MisU		40	x	x	1	1	0		x	x	S	2,800	15	AL			
379		Bethel; MisU		11,800	x	x	765	175	7		39	x	S	2,940	15	AL			
380		Aux Vases; MisU			x	x	102	4	3		38	x	S	3,020	5	AC			
381		Lower Ohara; MisL		61,500	x	x	184	8	6		38	x	OL	3,030	8	AC			
382		Rosiclare; MisL			x	x	1,901	15	41		40	x	OL	3,050	10	AC			
383		McClosky; MisL			x	x	0	0	0		x	x	L	2,935	3	A			
384		St. Louis; MisL ⁷		20	x	x	0	0	0		x	x	L	3,575	10	A			
385		Salem; MisL		80	x	x	3	0	1		x	x	L	3,600	17	A			
386		Warsaw; MisL ⁷		10	x	x	0	0	0		x	x	L	3,600	10	A			
387		Devonian; Dev ⁷		20	x	x	0	0	0		x	x	L	4,350	10	A			
388		1																	

TABLE 1A—ALFRED H. BELL AND VIRGINIA KLINE

LINE NUMBER	FIELD (County) ^a	PRODUCING INFORMATION NAME AND AGE ^b	YEAR OF DISCOVERY	OIL PRODUCTION		NUMBER OF WELLS ^c		WELLS PRODUCING DEC. 1953		CHARACTER OF OIL ^d		PRODUCING FORMATION			DEEPEST ZONE TESTED TO END OF 1953				
				AREA PROVED ACRES	BARRELS		COMPLETED TO END 1953	1953		FLOWING	ARTIFICIAL LIFT	GRAVITY ^d API	SULPHUR PER CENT	CHARACTER ^e	DEPTH TO TOP OF PROD. ZONE - FT.	PROCESSED THIS PRESS. AVG. FT. BEI ^f	STRUCTURE ^h	NAME	DEPTH OF HOLE, FT.
					TO END OF 1953	DURING 1953		COMPLETED	ABANDONED										
396		Aux Vases; MisU		80	x	x	1	1	0			x	x	S	2,950	7	AL		
396		McClosky; MisL		540	x	x	20	4	0			39	0.12	OL	3,065	15	A		
397		1					0	0	0										
398	Coil; Wayne		1942	480	1,295,000	32,000	17	0	0	0	12						A	MisL	3,250
399		Aux Vases; MisU		460	1,294,000	32,000	16	0	0			39	0.12	S	2,700	10	A		
400		McClosky; MisL		20	1,000	0	1	0	0			x	x	OL	3,065	15	AC		
401	Coil West; Jefferson		1942	300	533,000	22,000	15	0	0	0	7						A	MisL	3,022
402		Aux Vases; MisU		90	x	x	4	0	0			x	x	S	2,720	15	AL		
403		Lower Ohara; MisL			x	x	1	0	0			x	x	L	2,790	7	AC		
404		Rosiclare; MisL		300	x	x	0	0	0			x	x	L	2,805	x	AC		
405		McClosky; MisL			x	x	6	0	0			x	x	L	2,880	8	AC		
406		1					4	0	0										
407	Concord; White		1942	1,380	3,730,000	150,000	106	3	0	0	92						A	MisL	3,115
408		Tar Springs; MisU		220	x	x	19	0	0			36	x	S	2,270	11	AL		
409		Cypress; MisU		160	x	x	9	0	0			x	x	S	2,625	10	AL		
410		Aux Vases; MisU		400	x	x	20	3	0			36	0.15	S	2,905	14	AL		
411		Lower Ohara; MisL		20	x	x	1	0	0			x	x	L	2,930	8	AC		
412		McClosky; MisL		1,100	x	x	44	0	0			37	x	L	2,990	10	AC		
413		1					13	0	0										
414	Concord East Consolidated		1942	100	156,000	9,000	8	0	0	0	5						A	MisL	3,125
415	White	Waltersburg; MisU		30	x	x	3	0	0			37	x	S	2,140	10	A		
416		Tar Springs; MisU		20	x	x	2	0	0			x	x	S	2,175	4	A		
417		Lower Ohara; MisL		40	x	x	2	0	0			x	x	L	2,895	6	AC		
418		McClosky; MisL		20	x	x	1	0	0			x	x	L	2,960	2	AC		
419	Concord North; White		1946	40	121,000	2,000	4	0	0	0	4						A	MisL	3,138
420		Aux Vases; MisU		40	x	x	4	0	0			38	x	S	2,950	10	A		
421		McClosky; MisL		20	x	x	0	0	0			x	x	L	3,035	6	A		
422		1					0	0	0										
423	Concord South		1944	760	1,389,000	195,000	73	10	4	0	58						A	MisL	3,157
424	Consolidated;	Waltersburg; MisU		50	x	x	5	0	0			38	x	S	2,290	10	A		
425	White - Gallatin ⁴⁵	Tar Springs; MisU		100	x	x	11	1	0			36	x	S	2,320	11	A		
426		Cypress; MisU		40	x	x	2	0	0			x	x	S	2,605	15	A		
427		Aux Vases; MisU		600	x	x	52	8	3			38	x	S	2,915	14	A		
428		McClosky; MisL		60	x	x	2	1	1			x	x	L	2,965	8	A		
429		1					1	0	0										
430	Cooks Mills; Coles ⁴⁶	Rosiclare; MisL	1941	60	8,000	2,000	3	1	0	0	1	36	x	S	1,820	6	A	MisL	1,912
431	Cooks Mills North; Coles ⁴⁷	Rosiclare; MisL	1946	10	200	0	1	0	0	0	0	x	x	S	1,780	10	A	MisL	1,845
432	Cordes; Washington	Bethel; MisU	1939	1,200	6,287,000	555,000	142	0	2	0	91	36	0.19	S	1,260	14	A	Dev	2,887
433	Covington Sguth; Wayne	McClosky; MisL	1943	320	163,000	4,000	8	0	0	0	3	39	0.18	L	3,310	5	AC	MisL	3,397
434	Craig; Perry	Trenton; Ord	1948	20	2,000	0	1	0	0	0	0	35	x	L	3,650	20	x	Ord	3,735
435	Crawat; Jefferson	Bethel; MisU	1939	120	314,000	6,000	11	0	0	0	8	35	0.23	S	2,070	10	A	MisL	2,362
436	Crossville; White ⁴⁹		1946	100	16,000	0	6	0	0	0	0						M	MisL	3,251
437		Bethel; MisU		20	x	0	2	0	0			x	x	S	2,880	9	ML		
438		Lower Ohara; MisL		20	x	0	1	0	0			x	x	L	3,100	3	MC		
439		McClosky; MisL		60	x	0	3	0	0			x	x	L	3,120	5	MC		
440	Crossville West; White ⁵⁰	Aux Vases; MisU	1952	10	1,500	500	1	0	1	0	0	x	x	S	3,030	8	ML	MisL	3,242
441	Dahlgren; Hamilton	McClosky; MisL	1941	700	1,163,000	8,000	43	0	1	0	3	39	0.16	L	3,300	11	A	MisL	3,493
442	Dale Consolidated;		1940	12,200	47,479,000	2,023,000	900	28	6	0	718						A	Dev	5,345
443	Hamilton	Tar Springs; MisU		460	x	x	25	0	0			x	x	S	2,430	25	A		
444		Hardinburg; MisU ⁷		100	x	x	0	0	0			x	x	S	2,480	10	A		
445		Cypress; MisU		850	x	x	45	1	0			38	0.25	S	2,700	15	A		
446		Paint Creek; MisU		2,000	x	x	9	0	0			36	x	S	2,960	18	A		
447		Bethel; MisU			x	x	107	1	1			39	0.19	S	2,975	18	A		
448		Aux Vases; MisU		9,200	x	x	489	22	2			39	0.15	S	3,075	20	A		
449		Lower Ohara; MisL			x	x	45	0	1			38	0.22	L	3,110	10	A		
450		Rosiclare; MisL		3,000	x	x	9	0	0			38	x	LS	3,130	7	A		
451		McClosky; MisL			x	x	45	3	0			40	0.19	L	3,150	7	A		
452		1					126	1	2										
453	Decatur; Macon	Silurian; Sil	1953	20	500	500	1	1	0	0	1	x	x	L	2,010	x	x	Sil	2,052
454	Divide; Jefferson		1943	240	398,000	9,000	11	0	1	0	7						A	MisL	2,890
455		Lower Ohara; MisL ⁷		20	x	x	0	0	0			x	x	L	2,705	11	AC		
456		McClosky; MisL		240	x	x	11	0	1			39	x	L	2,750	6	AC		
457		1					0	0	0										
458	Divide East; Jefferson		1947	690	1,115,000	87,000	40	1	2	0	30						A	MisL	2,911
459		Aux Vases; MisU		110	x	x	9	0	0			38	x	S	2,620	10	AL		
460		Rosiclare; MisL		40	x	x	2	0	0			39	x	L	2,700	10	AC		
461		McClosky; MisL		600	x	x	28	1	2			38	x	L	2,750	5	AC		
462		1					1	0	0										
463	Divide South; Jefferson	McClosky; MisL	1948	80	159,000	9,000	4	0	0	0	4	35	x	L	2,880	5	x	MisL	2,981
464	Divide West; Jefferson		1944	1,140	2,738,000	79,000	48	1	0	0	40						A	MisL	2,902
465		Lower Ohara; MisL		120	x	x	0	0	0			x	x	L	2,680	10	AC		
466		Rosiclare; MisL		120	x	x	1	0	0			x	x	LS	2,700	6	AC		
467		McClosky; MisL		1,140	x	x	38	1	0			37	0.21	L	2,750	6	AC		
468		1					9	0	0										
469	Dix; Jefferson - Marion		1938	2,500	7,692,000	488,000	146	39	0	0	136						A	Dev	3,874
470		Bethel; MisU		1,900	x	x	105	4	0			38	0.18	S	1,950	12	A		
471		Aux Vases; MisU ⁷		10	x	x	0	0	0			x	x	S	2,000	5	AL		
472		Lower Ohara; MisL		20	x	x	1	0	0			x	x	L	2,130	7	AC		
473		Rosiclare; MisL		620	x	x	27	22	0										

TABLE 1A—OIL AND GAS DEVELOPMENTS IN ILLINOIS

LINE NUMBER	FIELD (County) ^a	PRODUCING INFORMATION NAME AND AGE ^b	YEAR OF DISCOVERY	OIL PRODUCTION			NUMBER OF WELLS ^c			WELLS PROD-UCING DEC. 1953		CHARACTER OF OIL ^b		PRODUCING FORMATION			DEEPEST ZONE TESTED ^d TO END OF 1953			
				BARRELS		COMPLETED TO END 1953	1953		FLOWING	ARTIFICIAL LIFT	GRAVITY ⁴ API	SULPHUR PER CENT	CHARACTER ^e	DEPTH TO TOP OF PROD. ZONE - FT.	PROD. THICKNESS AVG. FT. NET ⁶	STRUCTURE ⁶	NAME	DEPTH OF HOLE, FT.		
				TO END OF 1953	DURING 1953		COMPLETED	ABANDONED												
499	Eldorado; Saline	Fredonia; MisL	1941	360	x	x	36	0	2			x	x	L	950	3	D	MisL	2,155	
500		Devonian; Dev ⁷		20	x	0	0	0	0	0			x	x	L	1,950	20			R
501		200		112,000	92,000	18	15	0	0	0	16									
502		Palestine; MisU		20	4,000	0	1	0	0	0			x	x	S	1,940	7			A
503		Tar Springs; MisU ⁷		20	x	x	0	0	0	0			x	x	S	2,205	12			A
504		Hardinsburg; MisU		70	x	x	5	5	0	0			x	x	S	2,340	7			A
505		Aux Vases; MisU		110	x	x	8	7	0	0			x	x	S	2,920	10			A
506		McClosky; MisL		10	x	0	1	0	0	0			34	0.14	L	2,945	5			A
507		1					3	3	0	0										
508		Eldorado East; Saline		Aux Vases; MisU	1953	50	14,000	14,000	3	3	0	0	3	x	x	S	2,900			4
509	Elk Prairie; Jefferson	McClosky; MisL	1938	20	1,000	0	1	0	0	0	0	x	x	L	2,735	7	x	MisL	2,956	
510	Elkville; Jackson	Bethel; MisU	1941	10	4,000	0	1	0	0	0	0	36	0.22	S	2,000	10	x	MisL	2,387	
511	Elbery Consolidated;		1941	1,630	1,377,000	425,000	108	23	5	0	97							MisL	3,536	
512	Edwards - Wayne	Bethel; MisU		220	x	x	19	0	0	0		x	x	S	3,110	11	HL			
513	Aux Vases; MisU	500	x	x	17	8	0	0			x	x	S	3,235	20	HL				
514	Lower Ohara; MisL	600	x	x	14	0	2	0	0	0	x	x	L	3,300	10	HC				
515	Rosciare; MisL	500	x	x	8	0	0	0	0	0	x	x	L	3,320	11	HC				
516	McClosky; MisL	600	x	x	22	2	3	0	0	0	x	x	L	3,350	4	HC				
517	St. Louis; MisL	40	x	x	1	0	0	0	0	0	x	x	L	3,430	10	HC				
518	1				27	13	0	0	0	0										
519	Elbery East; Edwards		1952	240	153,000	148,000	17	16	0	0	17							MisL	3,390	
520	Aux Vases; MisU	80	x	x	8	8	0	0	0	0	x	x	S	3,180	35	ML				
521	Lower Ohara; MisL	140	x	x	7	6	0	0	0	0	x	x	L	3,250	6	MC				
522	Rosciare; MisL	40	x	x	2	2	0	0	0	0	x	x	L	3,255	4	MC				
523	Elbery North; Edwards ⁵⁴		1942	100	4,000	0	3	0	0	0	0							MisL	3,496	
524	Rosciare; MisL	60	1,000	0	2	0	0	0	0	0	x	x	S	3,350	9	ML				
525	McClosky; MisL	40	3,000	0	1	0	0	0	0	0	37	0.19	L	3,420	7	MC				
526	Elbery South; Edwards ⁵⁵		1943	2000	145,000	5,000	8	3	0	0	3							MisL	3,434	
527	Aux Vases; MisU	40	7,000	5,000	4	3	0	0	0	0	x	x	S	3,200	15	ML				
528	McClosky; MisL	160	138,000	0	4	0	0	0	0	0	38	x	L	3,300	9	MC				
529	Elliottstown; Effingham ⁵⁶	Rosciare; MisL	1947	20	14,000	0	1	0	0	0	0	x	x	S	2,730	8	x	MisL	2,884	
530	Elliottstown North; Effingham	Cypress; MisL	1953	20	5,000	5,000	2	2	0	0	2	x	x	S	2,430	4	x	MisL	2,865	
531	Enfield; White ⁵⁷		1950	270	135,000	73,000	15	10	0	0	13							MisL	3,497	
532	Aux Vases; MisU	130	x	x	8	7	0	0	0	0	x	x	S	3,250	10	AL				
533	Lower Ohara; MisL	40	x	x	2	2	0	0	0	0	x	x	L	3,310	4	AC				
534	McClosky; MisL	100	x	x	5	1	0	0	0	0	x	x	L	3,385	8	AC				
535	Epworth Consolidated; White ⁵		1941	480	784,000	143,000	42	7	1	0	38							MisL	3,227	
536	Biehl; Pen	30	x	x	3	0	0	0	0	0	x	x	S	1,840	4	Af				
537	Degonia; MisU	60	x	x	5	0	0	0	0	0	38	x	S	2,090	10	AL				
538	Clare; MisU	110	x	x	11	3	0	0	0	0	x	x	S	2,100	10	AL				
539	Waltersburg; MisU	30	x	x	1	1	0	0	0	0	x	x	S	2,345	6	AL				
540	Tar Springs; MisU	50	x	x	5	0	0	0	0	0	38	x	S	2,360	15	Af				
541	Cypress; MisU	20	x	x	1	0	0	0	0	0	38	x	S	2,730	10	Af				
542	Aux Vases; MisU	130	x	x	11	1	0	0	0	0	38	x	S	3,000	13	Af				
543	Lower Ohara; MisL ⁷	20	x	x	0	0	0	0	0	0	x	x	L	3,095	10	AC				
544	Rosciare; MisL	60	x	x	2	1	1	0	0	0	x	x	L	3,115	2	AC				
545	1				3	1	0	0	0	0										
546	Evers; Effingham ⁵⁸		1948	30	1,000	0	2	1	0	0	1							MisL	2,808	
547	Rosciare; MisL	20	0	0	1	1	0	0	0	0	x	x	L	2,610	4	x				
548	McClosky; MisL	10	1,000	0	1	0	0	0	0	0	x	x	L	2,660	4	x				
549	Evers South; Effingham ⁵⁹	Rosciare; MisL	1948	10	2,000	0	1	0	0	0	0	x	x	LS	2,650	8	x	MisL	2,771	
550	Ewing; Franklin		1944	150	442,000	31,000	8	0	4	0	3							MisL	3,094	
551	Aux Vases; MisU	10	46,000	4,000	1	0	0	0	0	0	37	x	S	2,835	8	AL				
552	McClosky; MisL	140	396,000	27,000	7	0	4	0	0	0	x	x	L	2,970	7	A				
553	Exchange; Marion		1943	80	57,000	1,000	2	0	0	0	1							MisL	2,869	
554	Lower Ohara; MisL ⁷	40	x	x	0	0	0	0	0	0	x	x	L	2,695	10	MC				
555	McClosky; MisL	80	x	x	2	0	0	0	0	0	x	x	L	2,730	8	MC				
556	1				0	0	0	0	0	0										
557	Exchange North; Marion ⁶⁰	McClosky; MisL	1951	20	2,000	0	1	0	0	0	0	x	x	L	2,715	5	MC	MisL	2,831	
558	Fairman; Marion-Clinton	Bethel; MisU	1939	460	1,529,000	41,000	41	0	2	0	22	37	0.27	S	1,435	10	A	Ord	4,100	
559	Fitzgerald; Jefferson		1944	10	16,000	0	1	0	0	0	0							MisL	3,012	
560	Bethel; MisU	10	x	0	1	0	0	0	0	0	x	x	S	2,760	5	x				
561	Aux Vases; MisU ⁷	10	x	0	0	0	0	0	0	0	x	x	S	2,800	x	x				
562	Flannigan; Hamilton	Aux Vases; MisU	1950	130	404,000	97,000	13	1	0	0	13	38	x	S	3,265	20	AL	MisL	3,491	
563	Flora; Clay		1938	800	1,023,000	41,000	35	4	0	0	25							MisL	3,100	
564	Cypress; MisU	10	x	x	1	0	0	0	0	0	x	x	S	2,630	10	AL				
565	Bethel; MisU	50	x	x	1	0	0	0	0	0	36	x	S	2,785	10	A				
566	Aux Vases; MisU	40	x	x	3	2	0	0	0	0	x	x	S	2,875	25	A				
567	McClosky; MisL	760	x	x	29	2	0	0	0	0	37	0.24	L	2,965	10	A				
568	1				1	0	0	0	0	0										
569	Flora South; Clay	McClosky; MisL	1946	100	129,000	8,000	4	0	0	0	3	39	x	L	2,985	6	AC	MisL	3,361	
570	Francis Mills; Saline	Cypress; MisU	1952	10	27,000	13,000	1	0	0	0	1	x	x	S	2,675	5	x	MisL	3,175	
571	Friendsville Central; Wabash	Bethel; MisU	1946	30	29,000	2,000	3	0	0	0	1	x	x	S	2,330	15	MC	MisL	2,630	
572	Friendsville North; Wabash	Biehl; Pen	1946	120	178,000	14,000	13	0	0	0	8	x	x	S	1,620	12	MC	MisL	2,592	
573	Frogtown North; Clinton	St. Louis; MisL	1951	460	923,000	216,000	27	1	0	0	26							Sil	2,456	
574	Devonian - Silurian	100	175,000	15,000	5	0	0	0	0	0	x	x	L	1,200	10	D				
575	Gards Point; Wabash	Lower Ohara; MisL	1951	20	46,000	13,000	1	0	0	0	1	x	x	L	2,240	8	R	MisL	2,961	
576	Gards Point North; Wabash	Lower Ohara; MisL	1952	20	15,000	11,000	1	0	0</											

TABLE 1A—ALFRED H. BELL AND VIRGINIA KLINE

LINE NUMBER	FIELD (County) ^a	PRODUCING INFORMATION NAME AND AGE ^b	YEAR OF DISCOVERY	OIL PRODUCTION			NUMBER OF WELLS ^c		WELLS PRODUCING DEC. 1953		CHARACTER OF OIL ^d		PRODUCING FORMATION			DEEPEST ZONE TESTED TO END OF 1953			
				BARRELS		COMPLETED TO END 1953	COMPLETED	ABANDONED	FLOWING	ARTIFICIAL LIFT	GRAVITY ^e API	SULPHUR PER CENT	CHARACTER ^g	DEPTH TO TOP OF PROD. ZONE—FT.	THICKNESS AVG. FT. IN ^h	STRUCTURE ⁱ	NAME	DEPTH OF HOLE, FT.	
				TO END OF 1953	DURING 1953														
599		Aux Vases; MisU		10	x	x	1	0	1			x	x	S	3,190	18	ML		
600		Lower Ohara; MisL		20	x	x	1	0	0			x	x	L	3,260	4	MC		
601		Rosiclare; MisL		60	x	x	2	0	0			x	x	L	3,280	4	MC		
602		McClosky; MisL		380	x	x	18	3	1			27	x	L	3,300	10	MC		
603		1					1	0	0										
604	Herald Consolidated; White - Gallatin ^{5, 65}		1939	2,600	4,329,000	637,000	254	43	6	0	218							MisL	3,394
605		Pennsylvanian; Pen			x	x	1	0	0			29	x	S	1,060	10	AL		
606		Pennsylvanian; Pen		150	x	x	10	0	0			29	x	S	1,500	15	AL		
607		Pennsylvanian; Pen			x	x	1	0	0			29	x	S	1,750	18	AL		
608		Degonia; MisU		10	x	x	1	0	0			36	x	S	1,920	12	AL		
609		Waltersburg; MisU		340	x	x	34	0	0			38	x	S	2,240	10	A		
610		Tar Springs; MisU		200	x	x	15	4	1			37	0.24	S	2,260	13	A		
611		Cypress; MisU		1,200	x	x	122	30	3			36	0.22	S	2,660	14	A		
612		Point Creek; MisU ⁷		10	x	x	0	0	0			36	x	S	x	x	AL		
613		Bethel; MisU		120	x	x	9	1	0			36	x	S	2,790	11	A		
614		Aux Vases; MisU		460	x	x	32	6	0			36	x	S	2,920	6	AL		
615		Lower Ohara; MisL			x	x	4	0	0			37	x	L	2,965	6	AC		
616		Rosiclare; MisL		460	x	x	2	0	0			x	x	L	3,005	4	AC		
617		McClosky; MisL			x	x	11	0	2			38	x	L	3,010	10	AC		
618		1					12	2	0										
619	Hidalgo; Jasper ⁶⁶	McClosky; MisL	1940	60	10,000	0	3	0	0	0	0	37	0.20	L	2,675	4	MC	Dev	4,140
620	Hidalgo North; Cumberland	Rosiclare; MisL	1946	40	8,000	1,000	2	0	0	0	1	x	x	S	2,655	12	MC	MisL	2,778
621	Hill; Effingham ⁶⁷	McClosky; MisL	1943	80	41,000	0	2	0	0	0	0	39	x	L	2,565	5	N	MisL	2,710
622	Hoffman; Clinton		1939	260	678,000	12,000	48	0	0	0	27							Dev	2,914
623		Cypress; MisU		120	x	x	12	0	0			x	x	S	1,190	11	A		
624		Bethel; MisU		180	x	x	35	0	0			33	0.21	S	1,320	7	A		
625		1					1	0	0										
626	Hoodville East; Hamilton ⁶⁸	McClosky; MisL	1944	20	1,000	0	1	0	0	0	0	x	x	L	3,365	3	N	MisL	3,411
627	Hord; Clay		1950	120	112,000	28,000	6	1	0	0	5							MisL	2,954
628		Aux Vases; MisU ⁷		10	x	x	0	0	0			x	x	S	2,710	10	ML		
629		McClosky; MisL		120	x	x	6	1	0			x	x	L	2,800	5	MC		
630		1					0	0	0										
631	Hord South; Clay	Ste. Genevieve; MisL	1951	460	684,000	300,000	19	8	0	0	19	x	x	L	2,790	7	NC	MisL	2,941
632	Huey; Clinton ⁶⁹	Bethel; MisU	1945	100	2,000	1,000	7	0	0	0	4	x	x	S	1,260	6	AL	Dev	2,720
633	Huey South; Clinton	Cypress; MisU	1953	20	500	500	2	2	0	0	2	x	x	S	1,090	6	x	SII	2,675
634	Hunt City; Jasper ⁷⁰	Rosiclare; MisL	1945	20	1,000	0	1	0	0	0	0	x	x	S	2,540	10	ML	MisL	2,715
635	Hunt City East; Jasper	Fredonia; MisL	1952	20	4,000	0	1	0	0	0	1	40	x	L	1,844	6	x	MisL	1,850
636	Hunt City South; Jasper	Ste. Genevieve; MisL	1947	80	26,000	3,000	4	0	1	0	2	x	x	L	2,445	7	MC	MisL	2,589
637	Ina; Jefferson ⁷¹	St. Louis; MisL	1938	40	16,000	0	2	0	0	0	0	36	0.20	L	3,000	4	AC	MisL	3,100
638	Ina North; Jefferson	McClosky; MisL	1949	20	1,000	0	1	0	0	0	0	x	x	L	2,940	4	x	MisL	3,150
639	Inclose; Edgar - Clark ⁵	Pennsylvanian; Pen	1941	30	x	x	4	0	0	0	0	x	x	S	340	8	AL	MisL	1,600
640	Ingraham; Clay ⁷²		1942	660	497,000	26,000	32	0	0	0	26							MisL	3,148
641		Aux Vases; MisU ⁷		.10	x	x	0	0	0			x	x	S	2,915	15	ML		
642		Rosiclare; MisL		620	x	x	28	0	0			37	0.21	L	3,000	7	MC		
643		McClosky; MisL		80	x	x	4	0	0			37	0.21	L	3,075	8	MC		
644	Inman East Consolidated; Gallatin		1940	3,160	10,468,000	536,000	307	4	0	0	281							MisL	3,020
645		Pennsylvanian; Pen		40	x	x	4	0	0			38	x	S	780	10	AF		
646		Degonia; MisU		90	x	x	1	0	0			37	x	S	1,690	10	AF		
647		Clore; MisU			x	x	1	0	0			37	x	S	1,725	8	AF		
648		Palestine; MisU		50	x	x	1	0	0			37	x	S	1,840	13	AF		
649		Waltersburg; MisU		500	x	x	29	0	0			38	x	S	1,980	18	AF		
650		Tar Springs; MisU		1,480	x	x	126	0	0			36	0.24	S	2,080	13	AF ⁷		
651		Hardinsburg; MisU		150	x	x	5	1	0			34	x	S	2,135	10	AF		
652		Cypress; MisU		1,360	x	x	92	1	0			35	0.23	S	2,390	14	AF		
653		Aux Vases; MisU		60	x	x	6	2	0			38	x	S	2,715	8	AF		
654		Lower Ohara; MisL		20	x	x	1	0	0			x	x	L	2,795	5	AF		
655		Rosiclare; MisL		20	x	x	1	0	0			x	x	L	2,790	7	AF		
656		McClosky; MisL		100	x	x	4	0	0			38	x	L	2,800	8	AF		
657		1					36	0	0										
658	Inman West Consolidated; Gallatin		1940	2,600	2,687,000	365,000	191	16	1	0	163							MisL	3,060
659		Pennsylvanian; Pen		40	x	x	4	1	0			x	x	S	925	8	NL		
660		Palestine; MisU		40	x	x	3	0	0			31	S	S	1,765	13	NL		
661		Waltersburg; MisU		50	x	x	5	0	0			x	x	S	2,080	10	TL		
662		Tar Springs; MisU		750	x	x	45	4	0			37	x	S	2,140	8	TL		
663		Hardinsburg; MisU		160	x	x	6	2	0			x	x	S	2,300	10	TL		
664		Cypress; MisU		1,070	x	x	64	1	1			37	x	S	2,475	10	T		
665		Renault; MisU ⁷		10	x	x	0	0	0			x	x	L	2,775	7	T		
666		Aux Vases; MisU		240	x	x	15	2	0			x	x	S	2,790	15	TL		
667		Lower Ohara; MisL		80	x	x	1	0	0			x	x	L	2,815	12	MC		
668		Rosiclare; MisL		40	x	x	1	0	0			x	x	L	2,815	8	MC		
669		McClosky; MisL		220	x	x	7	0	0			36	0.19	L	2,940	6	MC		
670		1					40	6	0										
671	Iola Consolidated; Clay - Effingham		1939	2,720	7,913,000	332,000	206	3	1	0	168							Dev	4,227
672		Tar Springs; MisU ⁷		10	x	x	0	0	0			x	x	S	1,890	9	AL		
673		Cypress; MisU		460	x	x	26	0	0			36	x	S	2,125	16	A		
674		Point Creek; MisU ⁷		30	x	x	0	0	0			x	x	S	2,255	10	AL		
675		Bethel; MisU		800	x	x	28	0	0			36	0.14	S	2,290	12	A		
676		Renault; MisU ⁷		10	x	x	0	0	0			x	x	L	2,320	x	AC		
677		Aux Vases; MisU		1,360															

TABLE IA—OIL AND GAS DEVELOPMENTS IN ILLINOIS

LINE NUMBER	FIELD (County) ^a	PRODUCING INFORMATION NAME AND AGE ^b	YEAR OF DISCOVERY	OIL PRODUCTION			NUMBER OF WELLS ^c		WELLS PROD- UCING DEC. 1953		CHARACTER OF OIL ^d		PRODUCING FORMATION				DEEPEST ZONE TESTED ^e TO END OF 1953		
				AREA PROVED ACRES	BARRELS		COMPLETED TO END 1953	ABANDONED	FLOWING	ARTIFICIAL LIFT	GRAVITY ^f API	SULPHUR PER CENT	CHARACTER ^g	DEPTH TO TOP OF PROD. ZONE - Ft.	THICKNESS AVG. FT. NET ^h	STRUCTURE ⁱ	NAME	DEPTH OF HOLE, FT.	
					TO END OF 1953	DURING 1953													1953 COMPLETED
701		Barlow; MisU ⁷		10	x	x	0	0	0			x	x	L	1,525	3	AC		
702		Cypress; MisU		60	x	x	2	0	0			38	x	S	1,380	12	A		
703		Bethel; MisU		870	x	x	82	0	1			38	0.16	S	1,535	12	A		
704		Devonian; Dev		160	x	31,000	7	0	0			39	0.27	L	3,090	12	A		
705		1					2	0	0										
706	Irvington East; Jefferson	Pennsylvanian; Pen	1951	20	5,000	2,000	2	0	0	0	2	x	x	S	1,030	15	x	Pen	1,156
707	Irvington North; Washington	Bethel; MisU	1953	130	62,000	62,000	13	13	0	0	13	x	x	S	1,470	6	x	Ord	4,334
708	Iuka; Marion	1	1947	120	67,000	4,000	3	0	0	0	1							MisL	2,911
709		McClosky; MisL		120	x	x	3	0	0			x	x	L	2,800	4	MC		
710		St. Louis; MisL ⁷		40	x	x	0	0	0			x	x	L	2,875	6	MC		
711		1					0	0	0										
712	Johnsonville Consolidated;		1940	8,900	28,038,000	602,000	395	10	2	0	322						A	Dev	5,198
713	Wayne	Bethel; MisU ⁷		30	x	x	0	0	0			x	x	S	2,950	12	AL		
714		Aux Vases; MisU		2,400	x	x	79	6	0			39	0.14	S	3,020	20	AL		
715		Lower Ohara; MisL		600	x	x	6	0	0			x	x	OL	3,120	10	AC		
716		Rosiclare; MisL		120	x	x	5	0	0			38	x	OL	3,150	8	AC		
717		McClosky; MisL		8,200	x	x	268	4	1			38	0.17	OL	3,170	15	AC		
718		1					37	0	1										
719	Johnsonville North;		1943	40	43,000	2,000	1	0	0	0	1						A	MisL	3,335
720	Wayne	Lower Ohara; MisL ⁷		40	x	x	0	0	0			38	0.17	OL	3,190	3	AC		
721		McClosky; MisL ⁷		40	x	x	0	0	0			38	0.17	OL	3,250	3	AC		
722		1					1	0	0										
723	Johnsonville South;		1942	400	364,000	50,000	30	9	0	0	22						A	MisL	3,300
724	Wayne	Aux Vases; MisU		250	x	x	23	9	0			39	x	S	3,060	15	A		
725		Rosiclare; MisL		20	x	x	1	0	0			x	x	L	3,160	4	AC		
726		McClosky; MisL		160	x	x	6	0	0			38	x	L	3,200	5	AC		
727	Johnsonville West;		1942	300	391,000	50,000	22	1	1	0	13						M	MisL	3,251
728	Wayne ⁷⁵	Bethel; MisU		10	4,000	3,000	1	1	0			x	x	S	2,925	7	ML		
729		Aux Vases; MisU		120	x	x	12	0	1			x	x	S	2,900	6	ML		
730		Lower Ohara; MisL		40	x	x	2	1	0			x	x	L	2,930	6	MC		
731		Rosiclare; MisL		20	x	x	1	0	0			x	x	L	3,075	4	MC		
732		McClosky; MisL		120	x	x	6	0	0			x	x	L	3,100	6	MC		
733	Junction; Gallatin	1	1939	170	340,000	32,000	18	0	0	0	16						M	MisL	2,795
734		Pennsylvanian; Pen		30	12,000	2,000	3	0	0			x	x	S	1,150	7	ML		
735		Waltersburg; MisU		130	323,000	30,000	14	0	0			35	x	S	1,750	14	ML		
736		Hardinsburg; MisU		10	5,000	0	1	0	0			x	x	S	2,120	5	ML		
737	Junction East; Gallatin	Waltersburg; MisU	1953	20	4,000	4,000	2	2	0	0	2	x	x	S	2,000	14	x	MisL	2,890
738	Junction North; Gallatin	1	1946	60	22,000	7,000	6	1	1	0	4						M	MisL	2,949
739		Pennsylvanian; Pen		40	16,000	1,000	4	0	1			x	x	S	1,565	16	ML		
740		Aux Vases; MisU		20	6,000	6,000	2	1	0			x	x	S	2,725	4	ML		
741	Junction City South;	Petro; Pen	1952	10	500	500	1	0	0	0	1	x	x	S	685	8	x	MisL	2,007
742	Marion	1																	
743	Keensburg East;		1939	120	9,000	0	3	0	0	0	0						M	MisL	2,802
744	Wabash ⁷⁶	Lower Ohara; MisL		40	x	0	1	0	0			x	x	L	2,705	10	MC		
745		McClosky; MisL		80	x	0	2	0	0			38	0.26	L	2,710	6	MC		
746	Keensburg South;		1944	190	334,000	88,000	14	6	0	0	12						A	MisL	2,879
747	Wabash	Pennsylvanian; Pen		30	x	x	3	0	0			x	x	S	1,150	15	AL		
748		Cypress; MisU		120	x	x	10	6	0			x	x	S	2,885	9	AL		
749		Lower Ohara; MisL		40	62,000	2,000	1	0	0			x	x	L	2,715	10	AC		
750	Keenville; Wayne	1	1945	700	1,188,000	124,000	51	0	1	0	44						A	MisL	3,267
751		Aux Vases; MisU		230	x	x	23	0	0			37	x	S	2,960	20	AL		
752		Lower Ohara; MisL		80	x	x	2	0	0			x	x	L	3,050	8	AC		
753		Rosiclare; MisL		20	x	x	1	0	0			x	x	L	3,060	10	AC		
754		McClosky; MisL		400	x	x	23	0	1			36	x	L	3,100	7	AC		
755		1					2	0	0										
755	Keenville East; Wayne	McClosky; MisL	1951	60	28,000	8,000	3	0	0	0	3	x	x	L	3,140	10	x	MisL	3,220
756	Kell; Jefferson ⁷⁷	McClosky; MisL	1942	40	3,000	0	1	0	0	0	0	37	0.26	L	2,625	6	A	MisL	2,720
757	Kenner; Clay	1	1942	630	815,000	35,000	45	1	0	0	39						A	MisL	3,082
758		Tar Springs; MisU		10	x	0	1	0	0			x	x	S	2,200	7	AL		
759		Bethel; MisU		580	x	35,000	41	1	0			38	0.22	S	2,690	10	A		
760		Aux Vases; MisU ⁷		10	x	0	0	0	0			x	x	S	2,835	9	AL		
761		Rosiclare; MisL		20	x	0	1	0	0			x	x	LS	2,875	5	AC		
762		McClosky; MisL		20	x	0	1	0	0			x	x	L	2,930	7	AC		
763		1					1	0	0										
764	Kenner North; Clay	1	1947	300	708,000	37,000	32	0	0	0	28						A	MisL	3,076
765		Bethel; MisU		280	x	x	27	0	0			36	x	S	2,755	8	A		
766		McClosky; MisL		120	x	x	5	0	0			36	x	L	2,970	6	AC		
767	Kenner South; Clay ⁷⁸	McClosky; MisL	1950	20	3,000	0	1	0	0	0	0	37	x	L	2,870	10	AC	MisL	3,000
768	Kenner West; Clay	1	1947	310	1,270,000	84,000	30	0	0	0	26						A	Dev	4,800
769		Cypress; MisU		300	x	x	14	0	0			36	x	S	2,600	26	A		
770		Bethel; MisU		200	x	x	2	0	0			38	x	S	2,705	9	A		
771		McClosky; MisL ⁷		40	x	x	0	0	0			38	x	L	2,870	4	AC		
772		1					14	0	0										
773	Keyesport; Clinton	Bethel; MisU	1949	130	46,000	11,000	12	0	0	0	7	x	x	S	1,180	8	AL	MisL	1,358
774	King; Jefferson	1	1942	900	1,500,000	97,000	44	6	0	0	38						A	Dev	4,759
775		Aux Vases; MisU		820	x	x	32	5	0			39	0.17	S	2,725	15	AL		
776		Lower Ohara; MisL		120	x	x	1	0	0			x	x	L	2,765	10	AC		
777		Rosiclare; MisL		120	x	x	4	0	0			40	0.16	LS	2,815	10	AC		
778		McClosky; MisL		100	x	x	1	0	0			x	x	L	2,840	5	AC		
779		1					6	1	0										
780	Kinmundy; Marion	Bethel; MisU	1950	20	14,000	4,000	2	0	0	0	2	34	x	S	1,915	3	A	MisL	2,389
781	Kinmundy North; Marion	Bethel; MisU	1953	10	500	500	1	1	0	0	1	x	x	S	2,040	6	x	MisL	2,301
782	La Clade; Fayette ⁷⁹	Bethel; MisU	1943	30	13,000	2,000	4	1	0	0	3	36	0.18	S	2,335	15	A	MisL	2,608
783	Lakewood; Shelby	1	1941	130	202,000	14,000	12	0	0	0	11						A	MisL	2,908
784		Bethel; MisU		80	x	x	7	0	0			38	x	S	1,690	7	AL		
785		Aux Vases; MisU		50	x	x	5	0	0			32	0.23	S	1,720	8	AL		
786	Lancaster; Wabash - Lawrence	1	1940	1,400	2,565,000	53,000	100	0	1	0	58						A	MisL	2,908
787		Paint Creek; MisU		10	x	x	1	0	0			x	x	S	2,530	5	AL		
788		Bethel; MisU		880	x	x	67	0	1			39	x	S	2,540	14	AL		
789		Lower Ohara; MisL		40	x	x	1	0	0			x	x	L	2,870	10	AC		
790		McClosky; MisL		500	x	x	30	0	0			40	0.28	L	2,690	7	AC	</	

TABLE IA—ALFRED H. BELL AND VIRGINIA KLINE

LINE NUMBER	FIELD (County) ^a	PRODUCING INFORMATION NAME AND AGE ^b	YEAR OF DISCOVERY	OIL PRODUCTION			NUMBER OF WELLS ^c			WELLS PRODUCING DEC. 1953		CHARACTER OF OIL ^d		PRODUCING FORMATION			DEEPEST ZONE TESTED TO END OF 1953		
				AREA PROVED ACRES	BARRELS		COMPLETED TO END 1953	1953		FLOWING	ARTIFICIAL LIFT	GRAVITY ^d API	SULPHUR PER CENT	CHARACTER ^e	DEPTH TO TOP OF PROD. ZONE - FT.	PROD. THICKNESS AVG. FT. INELS	STRUCTURE ^f	NAME	DEPTH OF HOLE, FT.
					TO END OF 1953	DURING 1953		COMPLETED	ABANDONED										
802		Lower Ohara; MisL		20	500	0	1	0	0			x	x	L	2,670	6	MC		
803		McClosky; MisL		20	16,000	0	1	0	0			x	x	L	2,720	12	MC		
804	Lawrence West;		1952	200	134,000	132,000	17	16	1	0	16							MisL	2,324
805	Lawrence	Paint Creek; MisU ⁷		10	x	x	0	0	0			x	x	S	2,040	4	x		
806		Bethel; MisU		170	x	x	13	12	1			x	x	S	2,050	15	x		
807		Aux Vases; MisU		10	2,000	2,000	1	1	0			x	x	S	2,110	8	x		
808		McClosky; MisL		40	x	x	1	1	0			x	x	L	2,225	11	x		
809		1					2	2	0										
810	Lexington; Wabash		1947	200	339,000	9,000	11	1	0	0	7							MisL	3,031
811		Cypress; MisU		10	3,000	3,000	1	1	0			x	x	S	2,585	10	AL		
812		McClosky; MisL		200	336,000	6,000	10	0	0			x	x	L	2,970	8	AC		
813	Lexington North; Wabash	Ste. Genevieve; MisL	1951	40	5,000	1,000	2	0	1	0	1	x	x	L	2,915	4	MC	MisL	3,045
814	Lillyville; Cumberland - Effingham	McClosky; MisL	1946	160	296,000	13,000	8	0	0	0	8	36	x	L	2,425	10	A	Dev	4,000
815	Livingston; Madison	Pennsylvanian; Pen	1948	370	221,000	36,000	45	6	1	0	38	36	x	S	535	15	ML	Ord	2,378
816	Livingston South; Madison	Pennsylvanian; Pen	1950	260	77,000	30,000	25	6	1	0	23	x	x	S	530	7	ML	Mis	845
817	Locust Grove; Wayne	1	1951	80	80,000	19,000	6	0	0	0	6							MisL	3,420
818		Aux Vases; MisU		40	x	x	4	0	0			x	x	S	3,215	10	x		
819		Lower Ohara; MisL		40	x	x	1	0	0			x	x	L	3,240	4	x		
820		McClosky; MisL ⁷		20	x	x	0	0	0			x	x	L	3,280	6	x		
821		1					1	0	0										
822	Locust Grove South; Wayne	Rosiclare; MisL	1953	20	0	0	1	1	0	0	1	x	x	L	3,300	10	x	MisL	3,394
823	Long Branch; Saline - Hamilton		1950	90	84,000	19,000	7	0	0	0	5							MisL	3,389
824		Palestine; MisU		20	49,000	11,000	2	0	0			x	x	S	2,070	8	AL		
825		Cypress; MisU		20	7,000	2,000	2	0	0			x	x	S	2,745	13	AL		
826		Aux Vases; MisU		10	x	x	1	0	0			x	x	S	3,095	9	AL		
827		McClosky; MisL		40	x	x	2	0	0			x	x	L	3,220	5	AC		
828	Louden; Fayette - Effingham ⁹		1937	23,200	174,584,000	5,177,000	2,158	5	6	0	1,979							St. Peter	4,680
829		Cypress; MisU		23,000	x	x	1,186	4	6			36	0.25	S	1,500	30	A		
830		Paint Creek; MisU			x	x	172	1	0			38	0.24	S	1,540	15	A		
831		Bethel; MisU		13,000	x	x	428	0	0			39	0.20	S	1,550	10	A		
832		Aux Vases; MisU ⁷		40	x	x	0	0	0			37	0.17	S	1,630	9	AL		
833		Carper; MisL ⁷		20	x	x	0	0	0			x	x	S	2,830	9	AL		
834		Devonian; Dev		2,800	15,206,000	612,000	85	0	0			29	0.48	L	3,000	15	A		
835		1					287	0	0										
836	Louisville North; Clay	Aux Vases; MisU	1953	10	1,000	1,000	1	1	0	0	1	x	x	S	2,760	5	MC	MisL	2,977
837	Lynchburg; Jefferson	McClosky; MisL	1951	40	113,000	46,000	2	0	0	0	2	x	x	L	3,045	8	x	MisL	3,169
838	McKinley; Washington		1940	220	402,000	10,000	17	0	2	0	8							Ord	3,983
839		Bethel; MisU		70	201,000	1,000	7	0	0			44	0.18	S	1,000	5	D		
840		Silurian; Sil		200	201,000	9,000	10	0	2			43	x	L	2,240	40	R		
841	Maple Grove Consolidated; Edwards - Wayne		1943	2,100	3,175,000	142,000	91	4	1	0	70							MisL	3,375
842		Aux Vases; MisU		200	x	x	11	4	0			x	x	S	3,145	15	A		
843		Lower Ohara; MisL		60	x	x	1	0	0			x	x	L	3,230	3	AC		
844		Rosiclare; MisL ⁷		20	x	x	0	0	0			x	x	L	3,250	1	AC		
845		McClosky; MisL		2,000	x	x	74	0	1			37	x	L	3,260	6	A		
846		1					5	0	0										
847	Maple Grove South; Edwards ⁸⁰	McClosky; MisL	1945	20	9,000	0	1	0	0	0	0	x	x	L	3,250	10	MC	MisL	3,358
848	Marcoc; Jefferson ⁸¹	McClosky; MisL	1938	40	13,000	0	2	0	0	0	0	23	0.54	L	2,745	15	MC	MisL	3,066
849	Marion; Madison	Silurian; Sil	1943	3,100	8,517,000	520,000	145	0	1	0	134	34	0.28	L	1,740	5	R	Ord	2,619
850	Marion; Williamson	Aux Vases; MisU	1950	10	500	0	1	0	0	0	0	40	x	S	2,385	5	x	MisL	2,560
851	Markham City; Jefferson	Ste. Genevieve; MisL	1942	760	1,168,000	27,000	19	0	0	0	11	38	0.08	L	3,070	10	A	MisL	3,215
852	Markham City North; Jefferson - Wayne		1943	500	874,000	29,000	16	0	1	0	8							MisL	3,169
853		Aux Vases; MisU		30	x	x	2	0	0			x	x	S	2,950	6	AL		
854		McClosky; MisL		500	x	x	14	0	1			38	0.24	L	3,075	8	AC		
855	Markham City West; Jefferson		1945	600	1,401,000	60,000	34	0	1	0	30							MisL	3,182
856		Aux Vases; MisU		320	x	x	16	0	0			38	x	S	2,905	15	AL		
857		McClosky; MisL		360	x	x	15	0	1			38	x	L	3,035	7	AC		
858		1					3	0	0										
859	Mason; Effingham		1940	140	219,000	6,000	12	0	0	0	4								
860		Bethel; MisU		10	x	x	1	0	0			x	x	S	2,295	8	AL		
861		McClosky; MisL		130	x	x	11	0	0			38	x	L	2,500	6	AC		
862	Mason North; Effingham		1951	120	104,000	35,000	10	1	0	0	10							MisL	2,553
863		Bethel; MisU		100	x	x	7	1	0			x	x	S	2,290	13	x		
864		Aux Vases; MisU ⁷		10	x	x	0	0	0			x	x	S	2,355	5	x		
865		Rosiclare; MisL		60	x	x	2	0	0			x	x	L	2,390	18	x		
866		McClosky; MisL ⁷		20	x	x	0	0	0			x	x	L	2,475	5	x		
867		1					1	0	0										
868	Massilon; Wayne - Edwards ⁸²	Lower Ohara; MisL	1946	120	91,000	500	3	0	2	0	0	37	x	L	3,255	6	MC	MisL	3,472
869	Massilon South; Edwards ⁸³		1947	20	500	0	1	0	0	0	0	x	x	L	3,315	9	MC	MisL	3,391
870	Mattoon; Coles ⁸⁴		1939	5,100	10,738,000	377,000	419	0	2	0	366							St. Peter	4,915
871		Cypress; MisU		2,000	x	x	95	0	0			38	0.16	S	1,750	13	A		
872		Aux Vases; MisU		180	x	x	4	0	0			38	x	S	1,900	15	AL		
873		Rosiclare; MisL		3,700	x	x	216	0	2			38	0.21	S	1,950	12	A		
874		McClosky; MisL		20	x	x	1	0	0			38	x	L	2,010	5	AC		
875		1					103	0	0										
876	Maunie East; White ⁸⁵	Aux Vases; MisU	1951	10	4,000	0	1	0	0	0	0	x	x	S	2,870	7	Af	MisL	3,032
877	Maunie North; White		1941	880	1,056,000	186,000	65	8	0	0	53							MisL	3,260
878		Pennsylvanian; Pen		10	x	x													

TABLE 1A—OIL AND GAS DEVELOPMENTS IN ILLINOIS

LINE NUMBER	FIELD (County)*	PRODUCING INFORMATION		YEAR OF DISCOVERY	OIL PRODUCTION		NUMBER OF WELLS			WELLS PROD- ¹ UCING DEC. 1953		CHARACTER OF OIL ^b		PRODUCING FORMATION				DEEPEST ZONE TESTED ^c TO END OF 1953	
		NAME AND AGE ^b	AREA PROVED ACRES		TO END OF 1953	DURING 1953	COMPLETED TO END 1953	1953		FLOWING	ARTIFICIAL LIFT	GRAVITY ^d API	SULPHUR PER CENT	CHARACTER ^e	DEPTH TO TOP OF PROD. ZONE - FT.	THICKNESS AVG. FT. NET ^g	STRUCTURE ^h	NAME	DEPTH OF HOLE, FT.
								COMPLETED	ABANDONED										
902		Aux Vases; MisU	40	x	x	2	0	0			x	x	S	2,950	18	A			
903		McClosky; MisL	20	500	0	1	0	0			x	x	L	3,040	3	AC			
904		1				2	0	0											
905	Mayberry; Wayne	McClosky; MisL	1941	240	304,000	4,000	7	0	1	0	39	0.16	L	3,350	8	AC	Dev	5,377	
906	Mayberry North; Wayne ⁸⁷	McClosky; MisL	1948	20	1,000	0	1	0	0	0	x	x	L	3,330	2	x	MisL	3,483	
907	McLose; Clark	Pennsylvanian; Pen	1953	10	1,000	1,000	1	1	0	0	1	x	S	840	9	x	MisU	887	
908	McLose South; Clark	Pennsylvanian; Pen	1953	10	0	0	1	1	0	0	1	x	S	865	7	x	MisU	880	
909	Miletus; Marlon		1947	200	193,000	17,000	14	0	0	0	12						Dev	3,950	
910		Bethel; MisU		80	x	x	5	0	0	0		36	x	S	2,140	7	A		
911		Aux Vases; MisU		100	x	x	5	0	0	0		36	x	S	2,200	7	A		
912		McClosky; MisL		60	x	x	1	0	0	0		36	x	L	2,350	5	A		
913		1					3	0	0	0									
914	Mill Shoals; White - Hamilton - Wayne		1939	2,400	6,668,000	225,000	187	4	2	0	135						MisL	4,311	
915		Aux Vases; MisU		2,200	x	x	144	2	2	2		40	0.14	S	3,245	11	A		
916		Lower Ohara; MisL			x	x	2	0	0	0		x	x	OL	3,320	11	AC		
917		Rosiclare; MisL		800	x	x	6	0	0	0		x	x	LS	3,345	8	AC		
918		McClosky; MisL			x	x	27	2	0	0		38	x	OL	3,375	5	AC		
919		1					8	0	0	0									
920	Mills Prairie; Edwards ⁸⁸	Lower Ohara; MisL	1948	20	2,000	0	1	0	0	0	0	x	x	L	2,925	5	MC	MisL	3,010
921	Mills Prairie North; Edwards	Lower Ohara; MisL	1953	40	2,000	2,000	2	2	0	0	2	x	x	L	2,925	5	MC	MisL	3,003
922	Mt. Auburn; Christian	Silurian; Sil	1943	180	41,000	3,000	5	1	0	0	3	37	0.28	L	1,890	5	MU	Sil	2,000
923	Mt. Carmel; Wabash ⁸⁹		1940	4,400	9,455,000	292,000	423	4	7	0	290						Dev	4,237	
924		Bridgeport; Pen			x	x	4	0	0	0		34	x	S	1,370	20	AL		
925		Bieh; Pen		800	x	x	45	0	1	0		37	0.21	S	1,470	20	AL		
926		Jordan; Pen			x	x	2	0	0	0		x	x	S	1,520	15	AL		
927		Palestine; MisU		30	x	x	3	0	0	0		x	x	S	1,580	10	AL		
928		Waltersburg; MisU ⁷		10	x	x	0	0	0	0		36	x	S	1,690	10	AL		
929		Tar Springs; MisU		940	x	x	14	0	1	0		36	x	S	1,790	13	AL		
930		Jackson; MisU ⁷		10	x	x	0	0	0	0		x	x	S	2,020	25	AL		
931		Cypress; MisU		3,300	x	x	251	3	0	0		36	0.17	S	2,025	15	AL		
932		Paint Creek; MisU		80	x	x	1	0	0	0		x	x	S	2,085	7	AL		
933		Bethel; MisU			x	x	3	0	0	0		36	x	S	2,110	16	AL		
934		Lower Ohara; MisL			x	x	7	0	0	0		36	x	OL	2,320	5	AC		
935		Rosiclare; MisL		1,500	x	x	6	0	1	0		37	0.26	S	2,350	5	AL		
936		McClosky; MisL			x	x	44	0	2	0		37	0.42	OL	2,360	6	AC		
937		1					43	1	2	0									
938	Mt. Erie North; Wayne		1944	140	267,000	29,000	8	1	0	0	4						MisL	3,364	
939		Aux Vases; MisU		20	x	x	2	0	0	0		x	x	S	3,110	8	ML		
940		Lower Ohara; MisL		20	x	x	1	0	0	0		x	x	L	3,170	6	MC		
941		McClosky; MisL		100	x	x	5	1	0	0		37	x	L	3,240	5	MC		
942	Mt. Olive; Montgomery ⁵	Pottsville; Pen	1942	50	x	x	5	0	0	0	0	33	0.16	S	605	6	A	Pen	905
943	Mt. Vernon; Jefferson		1943	190	274,000	17,000	7	0	0	0	3						MisL	3,008	
944		Aux Vases; MisU		30	x	2,000	3	0	0	0		x	x	S	2,665	8	A		
945		Lower Ohara; MisL ⁷		20	x	0	0	0	0	0		x	x	L	2,750	5	AC		
946		McClosky; MisL		160	x	15,000	3	0	0	0		39	0.18	L	2,800	7	AC		
947		1					1	0	0	0									
948	Nason; Jefferson	Rosiclare; MisL	1943	20	18,000	3,000	1	0	0	0	1	x	x	S	2,790	12	ML	MisL	2,925
949	New Bellair; Crawford ⁹⁰		1942	30	10,000	0	3	0	0	0	0						Dev	2,760	
950		Pennsylvanian; Pen		10	0	0	1	0	0	0		x	x	S	650	3	ML		
951		Pennsylvanian; Pen		20	10,000	0	2	0	0	0		29	0.30	S	1,165	10	ML		
952	New Harmony Consolidated		1939	22,000	73,862,000	3,521,040	1,904	49	16	0	1,482						Shakopee	7,682	
953	White - Wabash - Edwards ⁸⁹	Jamestown; Pen			x	x	2	0	0	0		32	x	S	720	13	AL		
954		Mansfield; Pen ⁷			x	x	0	0	0	0		x	x	S	x	x	AL		
955		Bridgeport; Pen		900	x	x	2	0	0	0		x	x	S	1,340	7	AL		
956		Bieh; Pen			x	x	72	7	0	0		37	x	S	1,850	20	AL		
957		Jordan; Pen ⁷			x	x	0	0	0	0		x	x	S	1,760	x	AL		
958		Degonia; MisU		160	x	x	4	0	1	0		38	x	S	1,925	10	AL		
959		Clore; MisU			x	x	3	0	0	0		x	x	S	1,980	10	AL		
960		Palestine; MisU		220	x	x	16	0	1	0		x	x	S	2,000	10	AL		
961		Waltersburg; MisU		820	x	x	32	2	0	0		34	0.40	S	2,155	20	AL		
962		Tar Springs; MisU		1,100	x	x	88	1	0	0		35	0.19	S	2,215	26	ALF		
963		Cypress; MisU		7,400	x	x	486	10	8	0		35	x	S	2,570	20	ALF		
964		Paint Creek; MisU		7,700	x	x	18	0	0	0		x	x	S	2,660	20	ALF		
965		Bethel; MisU			x	x	432	6	2	0		34	0.24	S	2,700	27	ALF		
966		Aux Vases; MisU		4,460	x	x	256	2	0	0		34	0.19	S	2,800	15	ALF		
967		Lower Ohara; MisL			x	x	22	0	1	0		x	x	OL	2,900	6	AC		
968		Rosiclare; MisL		5,000	x	x	15	1	1	0		x	x	LS	2,910	10	AC		
969		McClosky; MisL			x	x	156	1	1	0		35	0.33	OL	2,925	8	AC		
970		Salem; MisL		40	x	x	1	0	0	0		x	x	L	3,755	6	AC		
971		1					299	19	1	0									
972	New Harmony South (Ill.); White		1941	90	73,000	2,000	7	0	1	0	1						MisL	3,207	
973		Waltersburg; MisU		20	x	x	1	0	0	0		x	x	S	2,250	18	AF		
974		Tar Springs; MisU		10	x	x	1	0	0	0		x	x	S	2,350	16	AF		
975		Cypress; MisU		10	0	0	1	0	1	0		x	x	S	2,670	8	AF		
976		Bethel; MisU		20	x	0	1	0	0	0		x	x	S	2,815	10	AF		
977		Aux Vases; MisU		10	2,000	0	1	0	0	0		x	x	S	3,005	7	AF		
978		McClosky; MisL		40	x	x	1	0	0	0		x	x	L	3,010	5	AF		
979		1					1	0	0	0									
980	New Harmony South (Ind); White ⁸⁹		1946	60	392,000	29,000	6	0	0	0	6						MisL	3,068	
981		Degonia; MisU		20	x	x	0	0	0	0		x	x	S	1,850	8	TF		
982		Palestine; MisU		30	x	x	1	0	0	0		x	x	S	1,955	10	TF		
983		Waltersburg; MisU		30	x	x	3	0	0	0		x	x	S	2,120	30	TF		
984		1					2	0	0	0									
985	New Haven Consolidated; White ⁸⁹		1941	360	800,000	30,000	31	2	0	0	29						MisL	2,980	
986		Tar Springs; MisU		130	x	x	8	0	0	0		36	0.27	S	2,105	12	AF		
987		Hardinsburg; MisU		10	x	x	1	0	0	0		36	x	S	2,245	8	AF		
988		Cypress; MisU		200	x	x	11	2	0	0		36	x	S	2,445	12	AF		
989		Aux Vases; MisU		70	x	x	4	0	0	0		36	x	S	2,720	15	AF		
990		McClosky; MisL		60	x	x	1	0	0	0		36	x	OL	2,820	6	AC		
991		1					6	0	0	0									
992	New Memphis; Clinton	Silurian; Sil	1952	80	37,000	19,000	4	1	0	0	4	x	x	L	1,940	x	R	Sil	2,077
993	New Memphis South; Clinton ⁹¹	Silurian; Sil	1952	20	1,000	0	1	0	0	0	0	26	x	L	2,000	25	x	Sil	2,131
994	Newton; Jasper	St. Genevieve; MisL	1944	80	70,000	2,000	4	0	0	0	2								

TABLE 1A—ALFRED H. BELL AND VIRGINIA KLINE

LINE NUMBER	FIELD (County) ^a	PRODUCING INFORMATION NAME AND AGE ^b	YEAR OF DISCOVERY	OIL PRODUCTION			NUMBER OF WELLS ^c		WELLS PRODUCING DEC. 1953		CHARACTER OF OIL ^d		PRODUCING FORMATION			DEEPEST ZONE TESTED ^e TO END OF 1953			
				AREA PROVED ACRES	BARRELS		COMPLETED TO END 1953	1953		FLOWING	ARTIFICIAL LIFT	GRAVITY ^f API	SULPHUR PER CENT	CHARACTER ^g	DEPTH TO TOP OF PROD. ZONE—FT.	PROD. THICKNESS AVG. FT. RES ^h	STRUCTURE ⁱ	NAME	DEPTH OF HOLE, FT.
					TO END OF 1953	DURING 1953		COMPLETED	ABANDONED										
1003	Richland	Lower Ohara; Misl		x	x	x	7	0	0		37	0.19	L	3,005	8	A			
1004		Rosiclare; Misl		x	x	x	2	0	0		37	0.19	L	3,050	5	A			
1005		McClosky; Misl		x	x	x	79	1	1		37	0.19	L	3,100	6	A			
1006		1					2	1	0										
1007	Olney South; Richland ⁸⁴		1937	800	484,000	259,000	36	10	0	0	34					M	Dev	4,910	
1008		Rosiclare; Misl		700	x	x	15	4	0		x	x	L	3,100	4	MC			
1009		McClosky; Misl		460	x	x	5	2	0		x	x	L	3,115	3	MC			
1010		1					16	4	0										
1011	Omaha; Gallatin ⁵		1940	670	2,242,000	135,000	45	0	0	0	40					D	Mis	2,941	
1012		Pennsylvanian; Pen		200	x	x	14	0	0		x	x	S	375	20	D			
1013		Biehli; Pen		60	x	x	4	0	0		x	x	S	1,335	10	D			
1014		Palestine; MisU		360	x	x	24	0	0		27	0.24	S	1,700	15	D			
1015		Tar Springs; MisU		60	x	x	3	0	0		x	x	S	1,900	15	D			
1016		1					0	0	0										
1017	Omaha East; Gallatin	Lower Ohara; Misl	1946	20	8,000	1,000	1	0	0	0	37	x	L	2,855	8	MC	MisL	3,000	
1018	Omaha South; Gallatin		1951	40	6,000	3,000	3	2	1	0	2					NC	MisL	3,035	
1019		Cypress; MisU		20	2,000	2,000	2	2	1		x	x	S	2,535	15	NC			
1020		Rosiclare; Misl		20	4,000	1,000	1	0	0		x	x	L	2,865	1	NC			
1021	Omaha West; Saline		1950	70	75,000	32,000	6	3	1	0	5					A	MisL	2,996	
1022		Cypress; MisU		50	x	x	4	2	1		x	x	S	2,600	14	AL			
1023		Aux Vases; MisU ⁷		10	x	x	0	0	0		x	x	S	2,800	30	AL			
1024		McClosky; Misl		20	1,000	1,000	1	1	0		x	x	L	2,910	8	AL			
1025		1					1	0	0										
1026	Omega; Marion ⁹⁵	McClosky; Misl	1946	40	5,000	0	2	0	0	0	x	x	L	2,490	10	D	MisL	2,584	
1027	Orchardville; Wayne		1950	60	34,000	7,000	4	1	0	0	4					A	MisL	3,000	
1028		Aux Vases; MisU		20	15,000	5,000	2	1	0		x	x	S	2,800	16	AL			
1029		McClosky; Misl		40	19,000	2,000	2	0	0		x	x	L	2,905	5	AC			
1030	Oskaloosa; Clay	Bethel; MisU	1950	360	682,000	173,000	36	0	0	0	35	x	S	2,595	15	A	MisL	2,961	
1031	Oskaloosa East; Clay		1947	40	32,000	3,000	3	0	0	0	2					x	MisL	3,050	
1032		Aux Vases; MisU		20	5,000	2,000	2	0	0		x	x	S	2,820	5	x			
1033		McClosky; Misl		20	27,000	1,000	1	0	0		x	x	L	2,895	4	x			
1034	Oskaloosa South; Clay	McClosky; Misl	1951	60	9,000	6,000	3	1	0	0	3	x	L	2,770	4	x	MisL	2,883	
1035	Pana; Christian	Bethel; MisU	1951	40	21,000	9,000	3	0	0	0	3	x	S	1,470	8	x	Dev	2,847	
1036	Panama; Boyd ⁵		1940	40	8,000	2,000	4	0	0	0	3					A	Dev	2,016	
1037	Montgomery	Golconda; MisU		30	3,000	1,000	3	0	0		x	x	L	705	12	A			
1038		Bethel; MisU		10	5,000	1,000	1	0	0		x	x	S	865	12	A			
1039	Parkersburg Consolidated;		1941	5,900	8,459,000	685,000	247	19	22	0	161					A	MisL	3,333	
1040	Richland - Edwards	Waltersburg; MisU		60	x	x	6	0	0		x	x	S	2,430	10	A			
1041		Cypress; MisU		140	x	x	7	1	0		x	x	S	2,830	12	A			
1042		Paint Creek; MisU		60	x	x	1	1	0		x	x	S	2,955	17	A			
1043		Bethel; MisU		120	x	x	4	2	0		x	x	S	2,930	12	A			
1044		Lower Ohara; Misl			x	x	2	0	0		x	x	L	3,100	10	A			
1045		Rosiclare; Misl		5,700	x	x	40	0	3		37	0.34	L	3,150	10	A			
1046		McClosky; Misl			x	x	170	6	18		38	0.31	OL	3,175	10	A			
1047		1					17	9	1										
1048	Parkersburg South;		1948	80	35,000	9,000	8	2	0	0	6					x	MisL	3,187	
1049	Edwards	Pennsylvanian; Pen		60	25,000	8,000	6	2	0		x	x	S	1,400	10	x			
1050		Bethel; MisU		20	10,000	1,000	2	0	0		x	x	S	2,815	5	x			
1051	Parkersburg West;		1943	240	151,000	14,000	10	0	0	0	8						MisL	3,331	
1052	Richland - Edwards	Lower Ohara; Misl		40	x	0	1	0	0		x	x	L	3,220	5	AC			
1053		McClosky; Misl		200	x	14,000	9	0	0		37	x	L	3,260	6	AC			
1054	Passport; Clay		1945	1,000	1,900,000	105,000	55	6	0	0	40						MisL	3,140	
1055		Rosiclare; Misl		40	x	0	1	0	0		x	x	L	3,005	5	AC			
1056		McClosky; Misl		1,000	x	105,000	53	6	0		37	x	L	3,020	10	A			
1057		1					1	0	0										
1058	Passport South;		1948	50	45,000	13,000	4	1	0	0	4					A	MisL	3,155	
1059	Richland	Cypress; MisU		30	26,000	12,000	3	1	0		x	x	S	2,665	15	AL			
1060		Rosiclare; Misl		20	19,000	1,000	1	0	0		x	x	L	3,025	6	AC			
1061	Patoka; Marion		1937	960	11,086,000	250,000	170	0	4	0	87					D	Dev	3,142	
1062		Cypress; MisU ⁷		60	x	x	0	0	0		39	x	S	1,280	10	D			
1063		Bethel; MisU		920	x	x	162	0	3		39	0.16	S	1,410	27	D			
1064		Rosiclare; Misl		440	x	x	7	0	1		39	0.31	S	1,550	9	D			
1065		Devonian; Dev		20	262,000	24,000	1	0	0		40	0.28	L	2,835	10	D			
1066	Patoka East; Marion		1941	600	3,775,000	180,000	64	4	0	0	52					D	Ord	4,178	
1067		Cypress; MisU		500	x	x	54	0	0		36	0.18	S	1,340	16	D			
1068		Bethel; MisU		60	x	x	5	0	0		36	0.23	S	1,465	10	D			
1069		McClosky; Misl		80	x	x	3	3	0		x	x	L	1,635	8	D			
1070		Devonian; Dev		40	91,000	76,000	2	1	0		x	x	L	2,950	30	R			
1071	Patoka South; Marion	Cypress; MisU	1953	120	12,000	12,000	12	12	0	0	12	x	S	1,350	6	x	MisL	1,728	
1072	Patoka West; Fayette	Bethel; MisU	1950	180	146,000	36,000	16	0	1	0	12	x	S	1,380	6	A	MisL	1,735	
1073	Phillipstown Consolidated;		1939	5,100	13,214,000	988,000	359	8	3	0	284					A	Dev	5,350	
1074	White - Edwards	Pennsylvanian; Pen		10	x	x	1	0	0		36	x	S	795	10	AF			
1075		Clark-Bridgeport; Pen			x	x	12	0	0		36	x	S	1,350	10	AF			
1076		Pennsylvanian; Pen		1,000	x	x	9	0	0		36	x	S	1,450	10	AF			
1077		Buchanan; Pen			x	x	23	0	0		36	x	S	1,550	15	AF			
1078		Biehli; Pen			x	x	42	1	0		36	0.22	S	1,875	15	AF			
1079		Degonia; MisU		500	x	x	27	1	0		35	x	S	1,975	15	AF			
1080		Clore; MisU			x	x	4	0	0		34	x	S	2,010	12	AF			
1081		Palestine; MisU ⁷		50	x	x	0	0	0		x	x	S	2,050	11	AF			
1082		Waltersburg; MisU		50	x	x	4	0	0		x	x	S	2,280	11	AF			

TABLE 1A—OIL AND GAS DEVELOPMENTS IN ILLINOIS

LINE NUMBER	FIELD (County) ^a	PRODUCING INFORMATION NAME AND AGE ^b	YEAR OF DISCOVERY	OIL PRODUCTION			NUMBER OF WELLS ^c		WELLS PRODUCING DEC. 1953		CHARACTER OF OIL ^d		PRODUCING FORMATION			DEEPEST ZONE TESTED TO END OF 1953			
				AREA, PROVED ACRES	TO END OF 1953	DURING 1953	COMPLETED TO END 1953	COMPLETED	ABANDONED	FLOWING	ARTIFICIAL LIFT	GRAVITY ^e API	SULPHUR PER CENT	CHARACTER ^f	DEPTH TO TOP OF PROD. ZONE, FT.	THICKNESS AVG. FT. NET ^g	STRUCTURE ^h	NAME	DEPTH OF HOLE, FT.
1106		McClosky; MisL		260	x	x	4	0	0			x	x	L	1,950	10	DC		
1107		Devonian & Silurian		300	908,000	410,000	15	0	1			x	x	L	3,330	10	R		
1108		1					8	0	0										
1109	Raleigh; Saline		1953	70	34,000	34,000	7	7	0	0	7							Misl.	3,101
1110		Cypress; MisU		70	x	x	6	6	0										
1111		Aux Vases; MisU ⁷		10	x	x	0	0	0										
1112		1					1	1	0										
1113	Raymond; Montgomery	Pottsville; Pen	1940	100	16,000	1,000	10	0	0	0	3	35	0.22	S	590	10	ML	Dev	2,049
1114	Raymond East; Montgomery	Pennsylvanian; Pen	1951	60	12,000	4,000	5	0	0	0	5	x	x	S	595	10	x	Misl.	1,008
1115	Reservoir; Jefferson	McClosky; MisL	1950	200	166,000	59,000	10	0	0	0	9	x	x	L	2,700	6	MC	Misl.	2,808
1116	Richview; Washington	Cypress; MisU	1946	10	6,000	1,000	1	0	0	0	1	x	x	S	1,820	7	AL	Misl.	1,932
1117	Ridgway; Gallatin ⁹⁸	McClosky; MisL	1946	20	100	0	1	0	0	0	0	x	x	L	2,540	6	MC	Misl.	2,938
1118	Riffle; Clay	Rosiclare; MisL	1948	100	67,000	5,000	5	0	0	0	4	x		L	2,735	7	MC	Misl.	2,848
1119	Rinard; Wayne	McClosky; MisL	1937	20	7,000	0	1	0	0	0	0	39	x	L	3,145	5	AC	Misl.	3,280
1120	Rinard North; Wayne		1952	200	117,000	56,000	10	1	2	0	8						M	Misl.	3,280
1121		Rosiclare; MisL		20	0	0	1	1	1			x	x	L	3,135	6	MC		
1122		McClosky; MisL		200	117,000	56,000	9	0	1			x	x	L	3,140	5	MC		
1123	Ritter; Richland	Ste. Genevieve; MisL	1950	80	95,000	9,000	4	0	1	0	2	x	x	L	3,210	12	MC	Misl.	3,925
1124	Ritter North; Richland	McClosky; MisL	1951	40	16,000	5,000	2	0	0	0	2	x	x	L	3,215	5	x	Misl.	3,288
1125	Roaches; Jefferson		1938	200	569,000	11,000	13	0	0	0	4						A	Dev	3,840
1126		Bethel; MisU ⁷		30	x	x	0	0	0			x	x	S	2,000	x	AL		
1127		Lower Ohara; MisL		60	x	0	2	0	0			37	0.22	L	2,170	5	AC		
1128		Rosiclare; MisL		160	x	x	5	0	0			37	0.22	L	2,190	12	AC		
1129		McClosky; MisL		120	x	0	6	0	0			37	0.22	L	2,250	4	AC		
1130	Roaches North; Jefferson		1944	350	1,233,000	39,000	34	0	0	0	29						A	Misl.	2,283
1131		Bethel; MisU		350	x	x	32	0	0			x	x	S	1,925	7	A		
1132		Rosiclare; MisL		60	x	x	1	0	0			x	x	L	2,115	8	AC		
1133		1					1	0	0										
1134	Roby; Sangamon ¹⁰⁰	Silurian; Sil	1949	20	200	0	1	0	0	0	0	x	x	L	1,775	5	x	Sil	1,780
1135	Rochester; Wabash ⁸⁹		1948	250	575,000	101,000	34	0	0	0	26						M	Misl.	2,810
1136		Pennsylvanian; Pen		120	x	x	11	0	0			x	x	S	1,300	16	MCF		
1137		Waltersburg; MisU		160	x	x	21	0	0			x	x	S	1,940	26	ML		
1138		1					2	0	0										
1139	Roland; White - Gallatin ³		1940	3,400	11,772,000	529,000	244	8	0	0	209						A	Dev	5,225
1140		Pennsylvanian; Pen ⁷		10	x	x	0	0	0			36	x	S	x	x	AL		
1141		Waltersburg; MisU		2,000	x	x	112	0	0			38	0.25	S	2,150	19	AL		
1142		Tar Springs; MisU		50	x	x	4	0	0			x	x	S	2,240	10	AL		
1143		Hardinsburg; MisU ⁷		30	x	x	0	0	0			x	x	S	x	x	AL		
1144		Cypress; MisU		540	x	x	29	2	0			32	0.12	S	2,560	15	AL		
1145		Paint Creek; MisU		40	x	x	0	0	0			x	x	S	2,750	12	AL		
1146		Bethel; MisU		600	x	x	22	0	0			32	0.20	S	2,760	15	AL		
1147		Aux Vases; MisU		650	x	x	25	5	0			32	0.12	S	2,880	12	AL		
1148		Lower Ohara; MisL		220	x	x	1	0	0			x		OL	3,000	8	AC		
1149		Rosiclare; MisL		160	x	x	1	0	0			38	x	L	3,020	4	AC		
1150		McClosky; MisL		180	x	x	3	0	0			38	x	L	3,050	4	AC		
1151		St. Louis; MisL		20	x	x	0	0	0			x	x	L	x	x	AC		
1152		1					47	1	0										
1153	Roland West; Saline	Aux Vases; MisU	1950	10	22,000	1,000	1	0	0	0	1	x	x	S	2,935	15	ML	Misl.	3,161
1154	Ruark; Lawrence		1941	230	1,778,000	224,000	24	0	0	0	17						A	Misl.	2,442
1155		Tar Springs; MisU		220	x	224,000	23	0	0			33	x	S	1,600	10	AL		
1156		Bethel; MisU		10	x	0	1	0	0			x	x	S	2,065	11	AL		
1157	Ruark West Consolidated; Lawrence		1947	400	341,000	136,000	35	0	0	0	31						M	Misl.	2,633
1158		Waltersburg; MisU		40	x	x	4	0	0			x	x	S	1,780	10	ML		
1159		Cypress; MisU ⁷		10	x	x	0	0	0			x	x	S	2,165	9	ML		
1160		Bethel; MisU		260	x	x	17	0	0			x	x	S	2,220	20	ML		
1161		Lower Ohara; MisL ⁷		80	x	x	0	0	0			x	x	L	2,350	5	MC		
1162		Rosiclare; MisL		40	x	x	1	0	0			x	x	L	2,390	5	MC		
1163		McClosky; MisL		220	x	x	4	0	0			x	x	L	2,400	3	MC		
1164		1					9	0	0										
1165	Rural Hill North; Hamilton ¹⁰¹	Rosiclare; MisL	1949	20	1,000	0	1	0	0	0	0	x	x	L	3,325	8	MC	Misl.	3,468
1166	Rural Hill West; Hamilton	Aux Vases; MisU	1945	70	29,000	7,000	7	5	0	0	7	x	x	S	3,220	12	MC	Misl.	3,483
1167	Russellville (Gas); Lawrence ⁵	McClosky; MisL ⁷	1937	40	10,000	1,000	0	0	0	0	1	x	x	L	1,560	7	AC	Dev	3,133
1168	St. Francisville East; Lawrence		1941	200	250,000	15,000	15	0	0	0	15						A	Misl.	1,960
1169		Hardinsburg; MisU		40	x	x	3	0	0			x	x	S	1,460	6	AL		
1170		Cypress; MisU		10	x	x	1	0	0			x	x	S	1,605	15	AL		
1171		Bethel; MisU		200	x	x	11	0	0			37	0.21	S	1,750	20	A		
1172	St. Jacob; Madison	Trenton; Ord	1942	1,120	2,597,000	83,000	53	0	2	0	40	40	0.23	L	2,260	17	A	Ord	2,549
1173	St. James; Fayette		1938	1,860	12,592,000	430,000	190	0	3	0	135						A	Dev	3,457
1174		Golconda; MisU ⁷		10	x	0	0	0	0			x	x	S	1,555	15	A		
1175		Cypress; MisU		1,860	x	430,000	189	0	3			34	0.31	S	1,580	16	A		
1176		1					1	0	0										
1177	St. Paul; Fayette	Bethel; MisU	1941	240	518,000	20,000	17	0	0	0	13	34	0.23	S	1,900	9	A	Dev	3,570
1178	Ste. Marie; Jasper	McClosky; MisL	1941	800	761,000	28,000	25	2	1	0	17	38	0.14	L	2,860	8	AC	Misl.	3,034
1179	Ste. Marie East; Jasper ¹⁰³	McClosky; MisL	1949	80	1,000	0	4	0	0	0	0	x	x	L	2,685	10	MC	Misl.	3,018
1180	Ste. Marie West; Jasper		1949	80	76,000	15,000	4	0	0	0	4						M	Misl.	2,968
1181		Aux Vases; MisU ⁷		10	x	x	0	0	0			38	x	S	2,720	25	ML		
1182																			

TABLE 1A—ALFRED H. BELL AND VIRGINIA KLINE

LINE NUMBER	FIELD (County) ^a	PRODUCING INFORMATION NAME AND AGE ^b	YEAR OF DISCOVERY	OIL PRODUCTION		NUMBER OF WELLS ^c		WELLS PRODUCING ^d		CHARACTER OF OIL ^e		PRODUCING FORMATION			DEEPEST ZONE TESTED TO END OF 1953				
				AREA PROVED ACRES	BARRELS		COMPLETED TO END, 1953	COMPLETED	ABANDONED	FLOWING	ARTIFICIAL LIFT	GRAVITY ^f API	SULPHUR PER CENT	CHARACTER ^g	DEPTH TO TOP OF PROD. ZONE - FT.	PROD. THICKNESS AVE. FT. NET ^h	STRUCTURE ⁱ	NAME	DEPTH OF HOLE, FT.
					TO END OF 1953	DURING 1953													
1207		Salem; MisL			x	x	8	0	0			37	x	L	2,160	17	A		
1208		Devonian; Dev		5,680	36,233,000	213,000	541	0	1		42	0.28	L	L	3,440	10	A		
1209		Trenton; Ord		2,160	3,921,000	101,000	2	0	0		x	x	L	L	4,500	50	A		
1210		1					708	2	0										
1211	Samsville; Edwards ¹⁰⁷	Waltersburg; MisU	1942	30	1,000	0	3	0	0	0	0	x	x	S	2,420	7	A	MisL	
1212	Samsville North; Edwards	Paint Creek - Bethel; MisU	1945	160	180,000	7,000	14	0	2	0	6	x	x	S	2,900	6	A	MisL	
1213	Samsville West; Edwards	Lower Ohara; MisL	1951	120	101,000	23,000	5	0	0	0	5			L			x	MisL	
1214		Rosiclare; MisL ⁷		60	x	x	3	0	0		x	x	L	3,260	6	x			
1215		McClosky; MisL		40	x	x	0	0	0		x	x	L	3,275	6	x			
1216		1		40	x	x	2	0	0		x	x	L	3,275	6	x			
1217		1					0	0	0										
1218	Sandoval West; Clinton	Cypress; MisU	1946	10	22,000	1,000	1	0	0	0	1	x	x	S	1,420	4	A	MisU	
1219	Santa Fe; Clinton ¹⁰⁸	Cypress; MisU	1944	10	2,000	0	1	0	0	0	0	x	x	S	955	10	A	Dev	
1220	Schnell; Richland	McClosky; MisL	1938	80	229,000	4,000	4	0	0	0	2	37	0.19	OL	3,000	5	AC	MisL	
1221	Schnell South; Clay	Rosiclare; MisL	1951	40	8,000	1,000	2	0	0	0	1	x	x	L	3,005	4	x	MisL	
1222	Seminary; Richland	McClosky; MisL	1945	160	173,000	5,000	8	0	0	0	6	x	x	L	3,195	8	MC	MisL	
1223	Sesser; Franklin	1	1942	400	741,000	71,000	31	4	0	0	24			L			A	Dev	
1224		Cypress; MisU		10	x	x	1	1	0		x	x	S	2,455	5	AL			
1225		Renault; MisU		300	x	x	10	0	0		39	0.17	L	2,690	10	AC			
1226		Aux Vases; MisU			x	x	12	1	0		39	0.17	S	2,700	10	AL			
1227		Rosiclare; MisL		60	x	x	1	1	0		x	x	L	2,810	10	AC			
1228		McClosky; MisL		100	x	x	2	1	0		x	x	L	2,840	5	AC			
1229		Devonian; Dev		40	x	x	2	0	0		x	x	L	4,360	x	AC			
1230		1					3	0	0										
1231	Shattuc; Clinton	1	1945	340	416,000	42,000	28	1	0	0	25			L			A	Ord	
1232		Cypress; MisU		160	x	x	12	0	0		x	x	S	1,280	7	AL			
1233		Bethel; MisU		10	x	x	1	0	0		x	x	S	1,420	13	AL			
1234		Trenton; Ord		240	249,000	22,000	15	1	0		40	x	L	4,020	13	A			
1235	Shawneetown; Gallatin ¹⁰⁹	Aux Vases; MisU	1945	10	500	0	1	0	0	0	0	x	x	S	2,650	10	MF	MisL	
1236	Shawneetown East; Gallatin	Aux Vases; MisU	1952	10	5,000	3,000	1	0	0	0	1	x	x	S	2,660	9	x	MisL	
1237	Shawneetown North; Gallatin ¹¹⁰	McClosky; MisL	1948	20	6,000	0	1	0	0	0	0	x	x	L	3,045	6	MF	MisL	
1238	Shelbyville; Shelby	Aux Vases; MisU	1946	60	21,000	2,000	5	0	0	0	1	x	x	S	1,860	15	A	MisL	
1239	Shelbyville East; Shelby	Aux Vases; MisU	1952	10	2,000	1,000	1	0	0	1	x	x	S	1,810	8	x	MisL		
1240	Sorento; Bond ¹¹¹	Devonian; Dev	1938	140	35,000	1,000	7	0	0	0	1	35	x	L	1,850	4	A	Dev	
1241	Sparta South; Randolph ¹¹²	Cypress; MisU	1949	10	0	0	1	0	0	0	0	x	x	S	880	8	A	MisU	
1242	Stanford South; Clay	1	1946	220	312,000	10,000	18	0	1	0	12			L			AL	MisL	
1243		Aux Vases; MisU		140	x	x	13	0	0		x	x	S	2,970	12	AL			
1244		McClosky; MisL		100	x	x	5	0	1		37	x	L	3,090	3	AC			
1245	Staunton; Macoupin	Pennsylvanian; Pen	1952	10	500	500	1	0	0	0	1	x	x	S	515	11	A	Ord	
1246	Stewardson; Shelby	Aux Vases; MisU	1939	60	135,000	9,000	6	0	0	0	5	37	0.18	S	1,945	9	A	MisL	
1247	Storms Consolidated; White ^{113, 5}	1	1939	2,300	7,239,000	261,000	215	5	2	0	155			L			AM	MisL	
1248		Waltersburg; MisU		2,100	x	x	194	1	1		32	0.28	S	2,230	15	AL			
1249		Tar Springs; MisU		70	x	x	4	0	0		36	x	S	2,340	10	MF			
1250		Cypress; MisU		50	x	x	2	0	0		x	x	S	2,700	10	MF			
1251		Bethel; MisU		10	x	x	1	0	0		x	x	S	2,810	x	MF			
1252		Aux Vases; MisU		100	x	x	5	1	0		39	x	S	2,900	10	MF			
1253		Ste. Genevieve; MisL		80	x	x	4	1	1		x	x	L	3,055	5	MC			
1254		1					5	2	0										
1255	Stringtown; Richland	Ste. Genevieve; MisL	1941	800	1,209,000	42,000	32	0	0	0	28	40	0.24	OL	3,025	8	AC	MisL	
1256	Stringtown East; Richland ¹¹⁴	McClosky; MisL	1948	20	2,000	0	1	0	0	0	0	x	x	L	3,010	4	x	MisL	
1257	Sumner; Lawrence	McClosky; MisL	1944	40	16,000	500	2	0	1	0	0	x	x	L	2,260	4	MC	MisL	
1258	Sumpter; White	1	1945	90	93,000	21,000	8	0	0	0	6			L			A	MisL	
1259		Tar Springs; MisU		60	82,000	19,000	5	0	0		x	x	S	2,575	18	AF			
1260		Hardinsburg; MisU		10	3,000	1,000	1	0	0		x	x	S	2,655	14	AF			
1261		Cypress; MisU		20	8,000	1,000	2	0	0		x	x	S	2,860	15	AF			
1262	Sumpter East; White	1	1951	160	165,000	79,000	11	2	1	0	10			L			A	MisL	
1263		Cypress; MisU		10	x	x	1	0	0		x	x	S	2,795	16	AL			
1264		Aux Vases; MisU		60	x	x	5	2	1		x	x	L	3,020	15	AL			
1265		Lower Ohara; MisL		40	x	x	2	0	0		x	x	L	3,115	12	AC			
1266		Rosiclare; MisL		60	x	x	2	0	0		x	x	L	3,140	4	AC			
1267		1					1	0	0										
1268	Sumpter North; White	Aux Vases; MisU	1952	40	28,000	21,000	4	1	0	0	4	x	x	S	3,185	3	NL	MisL	
1269	Sumpter South; White	Tar Springs; MisU	1948	110	107,000	18,000	9	0	0	0	9	x	x	S	2,580	8	AF	MisL	
1270	Sumpter West; White	Aux Vases; MisU	1952	10	4,000	4,000	1	0	0	0	1	x	x	S	3,165	5	NL	MisL	
1271	Tamaroa; Perry ⁵	Cypress; MisU	1942	150	118,000	50,000	14	1	0	0	11	36	0.12	S	1,120	13	AL	MisL	
1272	Taylor Hill; Franklin ¹¹⁵	Lower Ohara; MisL	1949	60	23,000	6,000	3	0	0	0	2	x	x	L	3,055	4	x	MisL	
1273	Thackeray; Hamilton	1	1944	560	2,317,000	61,000	50	0	0	0	43			L			A	MisL	
1274		Aux Vases; MisU		560	x	x	49	0	0		x	x	S	3,360	15	AL			
1275		Lower Ohara; MisL ⁷		160	x	x	0	0	0		x	x	L	3,435	5	AC			
1276		McClosky; MisL ⁷			x	x	0	0	0		x	x	L	3,500	10	AC			
1277		1					1	0	0										
1278	Thompsonville; Franklin ¹¹⁶	McClosky; MisL	1940	240	285,000	0	19	0	0	0	0	38	0.16	L	3,120	10	A	MisL	
1279	Thompsonville East; Franklin	Aux Vases; MisU	1949	60	185,000	15,000	6	0	0	0	6	38	x	S	3,150	8	ML	MisL	
1280	Thompsonville North; Franklin	1	1944	530	1,502,000	46,000	71	1	1	0	50			L			A	MisL	
1281		Cypress; MisU		20	x	x	10	0	1		x	x	S	2,750	10	AL			
1282		Aux Vases; MisU		540	x	x	70	1	0		39	x	S	3,100	20	AL			
1283	Tilden; Randolph	Silurian; Sil	1952	400	930,000	518,000	19	17	0	0	19	42	x	L	2,160	60	R	Ord	
1284	Tolliver; Clay ¹¹⁷	McClosky; MisL	1942	20	6,000	0	1	0	0	0	0	37	x	OL	2,790	5	MC	MisL	
1285	Tolliver East; Clay	1	1943	80	196,000	6,000	4	0	0	0	4			L					

TABLE 1A—OIL AND GAS DEVELOPMENTS IN ILLINOIS

LINE NUMBER	FIELD (County) ^a	PRODUCING INFORMATION NAME AND AGE ^b	YEAR OF DISCOVERY	OIL PRODUCTION			NUMBER OF WELLS:			WELLS PROD- ^c UCING DEC. 1953		CHARACTER OF OIL ^h		PRODUCING FORMATION				DEEPEST ZONE TESTED ⁱ TO END OF 1953	
				AREA PROD ACRES	BARRELS		COMPLETED TO END 1953	1953		FLOWING	ARTIFICIAL LIFT	GRAVITY ^g API	SULPHUR PER CENT	CHARACTER ^e	DEPTH TO TOP OF PROD. ZONE - FT.	PROD. THICKNESS AVG. FT. NET ^f	STRUCTURE ^d	NAME	DEPTH OF HOLE, FT.
					TO END OF 1953	DURING 1953		COMPLETED	ABANDONED										
1306	Wakefield; Jasper ¹¹⁸	Rosiclare; MisL	1946	40	2,000	1,000	2	1	1	0	0	x	x	L	3,100	5	x	MisL	3,207
1307	Wakefield North; Jasper	McClosky; MisL	1953	20	11,000	11,000	1	1	0	0	1	x	x	L	3,000	6	x	MisL	3,204
1308	Walpole; Hamilton		1941	1,710	5,344,000	192,000	95	1	2	0	91						A	MisL	3,390
1309		Tar Springs; MisU		90	x	x	6	0	0	0		36	x	S	2,465	15	AL		
1310		Aux Vases; MisU		1,620	x	x	89	1	2			38	0.13	S	3,070	20	A		
1311	Walpole South; Hamilton	Aux Vases; MisU	1951	20	77,000	20,000	2	0	0	0	2	x	x	S	3,120	6	x	MisL	3,362
1312	Waltonville; Jefferson	Bethel; MisU	1943	40	95,000	3,000	4	0	0	0	3	38	0.14	S	2,460	9	A	MisL	2,905
1313	Wamac East; Marion	Petoy; Pen	1952	40	7,000	5,000	4	0	0	0	4	x	x	S	845	15	ML	MisL	2,216
1314	Waverly; Morgan ⁵	Devonian; Dev.	1946	20	0	0	1	0	0	0	0	x	x	L	1,020	10	A	Ord	1,543
1315	Weaver; Clark		1949	680	913,000	186,000	38	3	2	0	30						R	Dev	2,135
1316		Cole; MisL		20	x	x	1	1	0			x	x	L	1,565	5	D		
1317		Devonian; Dev		680	x	x	37	2	2			37	x	L	2,030	10	R		
1318	West End; Hamilton -		1945	140	434,000	13,000	11	0	0	0	8						M	MisL	3,419
1319	Saline	Aux Vases; MisU		120	434,000	13,000	10	0	0			36	x	S	3,140	15	ML		
1320		McClosky; MisL		20	300	0	1	0	0			x	x	L	3,275	5	MC		
1321	West Frankfort; Franklin		1941	1,000	2,551,000	126,000	66	1	0	0	60						A	MisL	3,156
1322		Tar Springs; MisU		470	x	x	35	0	0			39	0.13	S	2,060	20	A		
1323		Aux Vases; MisU		40	x	x	2	0	0			37	x	S	2,710	20	AL		
1324		Lower Ohara; MisL			x	x	11	0	0			39	x	L	2,760	8	AC		
1325		Rosiclare; MisL ⁷		560	x	x	0	0	0			x	x	L	2,810	8	AC		
1326		McClosky; MisL			x	x	6	1	0			38	x	L	2,825	14	AC		
1327					x	x	12	0	0										
1328	Westfield East; Clark	Pennsylvanian; Pen	1947	100	x	x	11	0	0	0	7	x	x	S	400	11	ML	Pen	678
1329	Westfield North; Coles		1949	20	400	0	2	0	0	0	0						x	Pen	611
1330		Pennsylvanian; Pen		10	400	0	1	0	0			x	x	S	275	5	x		
1331		Pennsylvanian; Pen		10	0	0	1	0	0			x	x	S	490	10	x		
1332	Whittington; Franklin		1939	250	400,000	43,000	18	0	0	0	15						A	MisL	3,130
1333		Hardinsburg; MisU		80	x	x	6	0	0			x	x	S	2,310	10	A		
1334		Cypress; MisU		60	x	x	5	0	0			39	0.12	S	2,535	10	A		
1335		Aux Vases; MisU		10	x	x	1	0	0			x	x	S	2,735	15	A		
1336		Rosiclare; MisL		20	x	x	1	0	0			x	x	L	2,880	10	AC		
1337		McClosky; MisL		60	x	x	2	0	0			38	0.24	L	2,870	9	AC		
1338		St. Louis; MisL		40	x	x	1	0	0			38	0.24	L	3,080	6	AC		
1339					x	x	2	0	0										
1340	Whittington South; Franklin	Cypress; MisU	1950	100	208,000	42,000	10	0	0	0	10	x	x	S	2,580	10	A	MisL	3,032
1341	Whittington West; Franklin		1943	240	179,000	9,000	13	0	0	0	5						A	MisL	2,942
1342		Bethel; MisU		10	x	x	1	0	0			x	x	S	2,615	10	AL		
1343		Aux Vases; MisU		140	x	x	4	0	0			x	x	S	2,680	15	AL		
1344		Lower Ohara; MisL		100	x	x	1	0	0			x	x	L	2,800	5	AC		
1345		Rosiclare; MisL ⁷		20	x	x	0	0	0			x	x	L	2,780	4	AC		
1346		McClosky; MisL		40	x	x	1	0	0			x	x	L	2,900	6	AC		
1347					x	x	6	0	0										
1348	Williams Consolidated;		1948	320	316,000	147,000	33	15	0	0	32						A	Dev	4,578
1349	Jefferson ¹¹⁹	Bethel; MisU		160	x	x	10	5	0			x	x	S	2,490	10	AL		
1350		Aux Vases; MisU		250	x	x	20	9	0			x	x	S	2,550	5	AL		
1351		McClosky; MisL ⁷		20	x	x	0	0	0			x	x	L	x	x	AC		
1352					x	x	3	1	0										
1353	Willow Hill East; Jasper	McClosky; MisL	1946	300	213,000	6,000	17	0	0	0	7	x	x	L	2,645	6	A	MisL	3,281
1354	Woburn Consolidated;		1940	670	1,029,000	63,000	68	0	4	0	57						A	Ord	3,279
1355	Bond	Cypress; MisU		220	x	x	20	0	1			x	x	S	865	8	AL		
1356		Bethel; MisU		260	x	x	30	0	0			36	0.20	S	1,020	10	AL		
1357		Devonian; Dev		80	x	x	3	0	1			x	x	L	2,275	5	AC		
1358		Trenton; Ord		320	x	x	15	0	2			38	0.27	L	3,170	12	AC		
1359	Woodlawn; Jefferson		1940	1,950	13,179,000	401,000	187	2	8	0	132						A	Ord	5,101
1360		Tar Springs; MisU ⁷		20	x	x	0	0	0			x	x	S	x	x	AL		
1361		Cypress; MisU		80	x	x	3	0	0			x	x	S	1,800	10	AL		
1362		Bethel; MisU		1,900	x	x	172	0	8			38	0.16	S	1,960	25	A		
1363		Aux Vases; MisU ⁷		240	x	x	0	0	0			39	x	S	1,975	10	A		
1364		Rosiclare; MisL		40	x	x	2	1	0			x	x	LS	2,205	15	A		
1365		McClosky; MisL ⁷		20	x	x	0	0	0			x	x	L	2,200	3	A		
1366		Devonian; Dev		220	x	70,000	10	1	0			39	x	S	3,630	6	A		
1367					x	x	0	0	0										
1368	Xenia; Clay	Aux Vases; MisU	1941	10	29,000	1,000	1	0	0	0	1	35	0.19	S	2,785	13	A	Dev	4,698
1369	Xenia East; Clay		1951	160	228,000	88,000	15	0	0	0	15						A	MisL	3,011
1370		Cypress; MisU		150	x	x	14	0	0			x	x	S	2,500	6	AL		
1371		Bethel; MisU		10	x	x	1	0	0			x	x	S	2,710	6	AL		
1372	Zenith; Wayne	McClosky; MisL	1948	40	22,000	1,000	2	0	0	0	1	x	x	L	2,970	7	AC	MisL	3,059
1373	Zenith North; Wayne		1951	260	534,000	136,000	13	0	0	0	13						N	MisL	3,210
1374		Rosiclare; MisL		240	x	x	8	0	0			x	x	L	3,080	6	NC		
1375		McClosky; MisL		160	x	x	1	0	0			x	x	L	3,140	4	NC		
1376					x	x	4	0	0										
1377	Zenith South; Wayne		1949	280	699,000	24,000	14	0	0	0	6						M	MisL	3,116
1378		Lower Ohara; MisL ⁷		40	x	x	0	0	0			x	x	L	2,920	6	MC		
1379		McClosky; MisL		280	x	x	12	0	0			x	x	L	2,985	7	MC		
1380					x	x	2	0	0										
1381	Total of fields discovered after January 1, 1937			321,070	1,174,037,000	51,924,000	23,852	1,060	298	0	18,387								
1382	Total for Illinois			434,100	1,688,505,000	59,025,000	45,215	1,156	627	83	27,330								

1. Wells completed as multiple pay wells.
2. Abandoned 1945; revived 1950.
3. Total of lines 2, 8, 12, 13, 18, 25, 31, and 36.
4. Includes Kibbie, Oblong, Robinson, and Hardinsville.
5. Pool also listed in Table III.
6. Pool also listed in Table I.
7. Has produced in multiple pay or workover wells only.
8. Includes Swearingen Gas (abandoned).
9. Total of lines 42, 50, 54, 55, 56, 57, and 58.
10. Anticline with accumulation due to change in character of stratum.
11. Total of lines 60 and 76.
12. Total of lines 1, 41, 59, 77, and 78.
13. Abandoned 1950.
14. Abandoned 1923.
15. Reef.
16. Anticline-lense.
17. Abandoned 1933; revived 1949.
18. Abandoned 1943.
19. Abandoned 1925; revived 1942.
20. Abandoned 1935.

21. Abandoned 1934.
22. Abandoned 1919.
23. Abandoned 1921.
24. Abandoned 1904; revived 1942.
25. Abandoned 1930; revived 1939; abandoned 1951.
26. Abandoned 1937.
27. Gas not used until 1905; abandoned 1930.
28. Abandoned 1900.
29. Total of lines 95 to 120 inclusive.
30. Total of line 1 to 11 inclusive.
31. Abandoned 1953.
32. Abandoned 1953.
33. Includes Assumption North.
34. Abandoned 1946.
35. Abandoned 1950.
36. Abandoned 1952.
37. Abandoned 1952.
38. Includes Cantrell South.
39. Abandoned 1953.
40. Abandoned 1949; revived 1952.

TABLE III—GAS AND CONDENSATE PRODUCTION IN ILLINOIS

LINE NUMBER	FIELD (County) ^a	PRODUCING FORMATION NAME AND AGE ^b	YEAR OF DISCOVERY	GAS PRODUCTION		CONDENSATE PRODUCTION <small>Thousands of bbl</small>		NUMBER OF WELLS ^c			CHARACTER OF GAS SULPHUR PER CENT	PRODUCING FORMATION			DEEPEST ZONE TESTED TO END OF 1953			
				AREA PROVED ACRES	MILLION CU. FT. ^c		TO END OF 1953	DURING 1953	COMPLETED TO END 1953	1953		CHARACTER ^e	DEPTH TO TOP OF PROD. ZONE - Ft.	EST. PROD. THICKNESS ^g AVG. FT. NET	STRUCTURE ^h	NAME	DEPTH OF HOLE, FT.	
					TO END OF 1953	DURING 1953				COMPLETED								ABANDONED
1	Main; Crawford ⁶	Hardinsburg; MisU	1906	180	0	0	1	0	0	0	x	S	1,075	40	ML	St. Peter	4,654	
2	Flat Rock; Crawford ^{6, 8}	Robinson; Pen	x	x	x	x	x	0	0	0	x	S	935	x	ML	Dev	3,110	
3	Ayers (Gas); Bond ¹³	Bethel; MisU	1922	325	298.7	0	21	0	0	0	x	S	940	5	A	Ord	3,044	
4	Greenville (Gas); Bond ¹⁴	Lindley (First & Second); MisU	1910	160	990.0	0	4	0	0	0	x	S	925	x	A	Dev	2,373	
5	Gillespie-Bend ¹ (Gas); Macoupin ²⁰	Unnamed; Pen	1923	80	135.8	0	4	0	0	0	x	S	540	x	A	Pen	303	
6	Spanish Needle Creek (Gas); Macoupin ²¹	Unnamed; Pen	1915	80	14.4	0	7	0	0	0	x	S	305	x	D	Pen	575	
7	Staunton (Gas); Macoupin ²²	Unnamed; Pen	1916	400	1,050.0	0	18	0	0	0	x	S	460	x	A	Ord	2,371	
8	Jacksonville (Gas); Morgan ^{5, 26}	Gas; Pen, MisL	1910	1,320	x	0	45	0	0	0	x	LS	330	5	ML	Ord	1,390	
9	Pittsfield (Gas); Pike ²⁷	Niagaran; Sil	1886	8,960	x	0	68	0	0	0	x	L	285	10	A	Pre-Cam	2,226	
10	Sparta; Randolph ^{6, 28}	Cypress; MisU	1888	160	x	0	18	0	0	0	x	S	850	7	D	Trentoo	3,130	
11	Total of fields discovered prior to January 1, 1937			11,645			186	0	0	0								
12	Albion Consolidated; Edwards-White ⁸	Pennsylvanian; Pen	1940	40	0	0	1	0	0	0	x	S	1,490	6	MF	Dev	5,185	
13	Carlinville North; Macoupin ⁶	Pottsville; Pen	1941	40	0	0	1	1	0	0	x	S	440	10	x	Pen	562	
14	Claremont; Richland ⁴³	Rosiclare; MisL	1950	180	0	0	1	0	0	0	x	L	3,200	5	MC	MisL	3,340	
15	Dubois; Washington ⁶	Cypress; MisU	1939	320	0	0	8	0	0	0	x	S	1,200	8	AL	Ord	4,217	
16	Dudley; Edgar ⁶	Pennsylvanian; Pen	1948	80	0	0	2	0	0	0	x	S	300	20	M	St. Peter	2,997	
17	Dudley West; Edgar	Pennsylvanian; Pen	1953	40	0	0	1	1	0	0	x	S	380	11	x	Pen	428	
18	Epworth Consolidated; White ⁶	Pennsylvanian; Pen	1941	160	0	0	1	0	0	0	x	S	1,090	40	Af	MisL	3,227	
19	Grandview; Edgar ⁶		1945	400	x	x	11	0	0	2					M	MisL	683	
20		Pennsylvanian; Pen		360	x	x	10	0	0	2	x	S	400	x	ML			
21		Salem; MisL		40	x	x	1	0	0	0	x	L	570	2	MC			
22	Harrisburg; Saline	Tar Springs; MisU	1952	160	49.9	39.2	1	0	0	1	x	S	2,085	6	x	MisL	2,789	
23	Herald Consolidated;		1939	1,040	x	232.9	18	0	0	9					A	MisL	3,394	
24	White-Gallatin ^{6, 65}	Pennsylvanian; Pen		320	x	183.7	8	0	0	6	x	S	700	25	AL			
25		Pennsylvanian; Pen		120	x		3	0	0	0	x	S	1,750	18	AL			
26		Waltersburg; MisU		120	x	0	3	0	0	0	x	S	2,240	10	A			
27		Tar Springs; MisU		480	547.2	49.2	4	0	0	3	x	S	2,315	6	AL			
28	Inclose; Edgar-Clark ⁶	Pennsylvanian; Pen	1941	320	x	x	8	0	0	0	x	S	340	8	AL	MisL	1,600	
29	Livingston East; Madison	Pennsylvanian; Pen	1951	40	0	0	1	0	0	0	x	S	540	12	x	Mis	815	
30	Livingston South; Madison ⁶	Pennsylvanian; Pen	1950	40	0	0	1	1	0	0	x	S	530	2	ML	Mis	845	
31	Louden; Fayette-Effingham ⁶		1937	1,380	x	0	14	0	2	0					A	St. Peter	4,680	
32		Burtschi; Pen		320	x	0	5	0	2	0	x	S	1,000	20	AL			
33		Tar Springs; MisU		1,440	0.9	0	9	0	0	0	x	S	1,170	2	AL			
34	Mt. Olive; Montgomery ⁶	Pottsville; Pen	1942	80	0	0	2	0	0	0	x	S	606	6	A	Pen	905	
35	Omaha; Gallatin ⁶	Tar Springs; MisU	1940	120	0	0	2	0	0	0	x	S	1,900	15	D	Mis	2,941	
36	Panama; Bond - Montgomery ⁶		1940	280	x	0	7	0	0	0					A	Dev	2,016	
37		Pennsylvanian; Pen		160	x	0	4	0	0	0	x	S	575	30	A			
38		Bethel; MisU		120	x	0	3	0	0	0	x	S	865	12	A			
39	Prentice; Morgan ⁶	Pennsylvanian; Pen	1953	40	0	0	1	1	0	0	x	S	255	3	x	Pen	289	
40	Roland; White-Gallatin ⁶	Waltersburg; MisU	1940	160	0	0	1	0	0	0	x	S	2,150				5,225	
41	Russellville (Gas); Lawrence ^{6, 102}	Bridgeport; Pen	1937	1,800	7,081.6	0	60	0	0	0					A	Dev	3,133	
42		Buchanan; Pen		x	x	x	18	0	0	0	x	S	760	15	AL			
43		Waltersburg; MisU		x	x	x	42	0	0	0	x	S	1,100	12	AL			
44	Storms Consolidated; White ⁶		1937	280	x	0	7	0	0	0	x	S	2,230	15	AL	MisL	3,267	
45	Tamaroa; Perry ⁶	Cypress; MisU	1942	320	0	0	2	1	0	0	x	S	1,120	13	AL	MisL	1,630	
46	Waverly; Morgan ⁶		1946	860	0	0	7	0	0	0					A	Ord	1,543	
47		Pennsylvanian; Pen		160	0	0	1	0	0	0	x	S	250	13	AL			
48		Devonian; Dev		700	0	0	6	0	0	0	x	L	1,000	10	A			
49	Westfield East; Clark	Pennsylvanian; Pen	1947	40	0	0	1	0	0	0	x	S	400	11	ML	Pen	678	
50	Total for fields discovered after January 1, 1937			8,540	8,004.1	272.1	158	5	2	12								
51	Total for Illinois			20,185	10,509.9	272.1	344	5	2	12								

41. Abandoned 1948.
 42. Abandoned 1951.
 43. Abandoned 1952.
 44. Includes Fairfield, Fairfield East, Merriam, and part of Stanford.
 45. Includes Herald East.
 46. Abandoned 1947; revived 1953.
 47. Abandoned 1950.
 48. Abandoned 1951.
 49. Abandoned 1952.
 50. Abandoned 1953.
 51. Abandoned 1946.
 52. Abandoned 1951.
 53. Abandoned 1939.
 54. Abandoned 1943; revived and abandoned 1948; revived and abandoned 1951.
 55. Abandoned 1952; revived 1953.
 56. Abandoned 1951.
 57. Abandoned 1951; revived 1952.
 58. Abandoned 1949; revived 1953.
 59. Abandoned 1951.
 60. Abandoned 1952.
 61. Abandoned 1952.
 62. Abandoned 1950.
 63. Includes Goldengate West.
 64. Abandoned 1946; revived 1950.
 65. Includes Cottonwood and Cottonwood North.
 66. Abandoned 1952.
 67. Abandoned 1950.
 68. Abandoned 1944.
 69. Abandoned 1949; revived 1952.
 70. Abandoned 1950.
 71. Abandoned 1946.
 72. Abandoned 1942; revived 1950.
 73. Abandoned 1945.
 74. Includes Stokes-Brownsville.
 75. Abandoned 1942; revived 1943.
 76. Abandoned 1947.
 77. Abandoned 1946.
 78. Abandoned 1952.
 79. Abandoned 1946; revived 1946.
 80. Abandoned 1950.

81. Abandoned 1941.
 82. Abandoned 1953.
 83. Abandoned 1947.
 84. Abandoned 1939; revived 1940.
 85. Abandoned 1952.
 86. Abandoned 1947; revived 1950.
 87. Abandoned 1948.
 88. Abandoned 1952.
 89. Illinois portion only.
 90. Abandoned 1943; revived 1952.
 91. Abandoned 1952.
 92. Abandoned 1948.
 93. Abandoned 1947; revived 1952; abandoned 1953.
 94. Abandoned 1940; revived 1949.
 95. Abandoned 1950.
 96. Abandoned 1947; revived and named 1951.
 97. Abandoned 1951.
 98. Abandoned 1946.
 99. Abandoned 1942.
 100. Abandoned 1951.
 101. Abandoned 1950.
 102. Gas abandoned 1950.
 103. Abandoned 1951.
 104. Includes Stanford West and part of Stanford.
 105. Abandoned 1952.
 106. Abandoned 1951.
 107. Abandoned 1943; revived 1951; abandoned 1952.
 108. Abandoned 1947.
 109. Abandoned 1950.
 110. Abandoned 1952.
 111. Abandoned 1940; revived 1947.
 112. Abandoned 1950.
 113. Includes Herald North.
 114. Abandoned 1950.
 115. Abandoned 1951; revived 1952.
 116. Abandoned 1947.
 117. Abandoned 1945.
 118. Abandoned 1947; revived and abandoned 1953.
 119. Includes Williams South.

ALFRED H. BELL AND VIRGINIA KLINE

TABLE IIA—DISCOVERY WELLS OF NEW POOLS

LINE NO	POOL	COUNTY	COMPANY AND FARM	LOCATION	TOTAL DEPTH Ft.	PRODUCING FORMATION	DEPTH TO TOP Ft.	INITIAL PRODUCTION Bbls. A/	DATE OF COMPLETION	NO. WELLS PROD. IN POOL 12/31/53
1	Albion West	Edwards	W. H. Sloan #1 P. Hortin	10-35-10E	3420	McClosky	3373	27;17	7-14	0
2	Amity South	Richland	Ervin Drlg. #1 E. Ernst	23-4N-14W	3010	Rosiclare	2889	30	8-18	0
3	Amity West	Richland	Illinois-Midcontinent #1 Vail Hrs.	22-4N-14W	3100	Aux Vases	2924	13; 20	8-11	1
4	Ashley	Washington	Ohio Oil #1 F. Sawyer	33-2S-1W	3116; PB 1440	Bethel	1429	15; 7	9-22	2
5	Blackland	Macon	Sun Oil #1 J. F. Damery	5-15N-1E	3780; PB 1945	Silurian	1912	10	7-7	1
6	Calhoun South	Wayne	Collins Bros. #1 Patton Est.	36-2N-9E	3350; PB 3195	Aux Vases	3130	50; 20	9-22	1
7	Decatur	Macon	Harmon Oil #1 Trump	5-16N-2E	2052	Dev. -Sil.	2010	13; 12	9-8	1
8	Dudley West	Edgar	E. Zink #1 Lauher	7-13N-13W	428	Pennsylvanian	380	1,000,000 cu ft	8-25	1
9	Eldorado East	Saline	G. L. Reasor #1 J. H. Porter	23-8S-7E	2915	Aux Vases	2910	250	5-5	3
10	Elliottstown North	Effingham	T. Lindsay #1 Niemerg-Roepke Comm.	20-7N-7E	2442	Cypress	2432	21; 28	2-24	2
11	Huey South	Clinton	Shulman #3 Farrell	6-1N-2W	1098	Cypress	1092	9; 40	11-3	2
12	Irvington North	Washington	D. Hopkins #1 J. Nolting	34-1N-1W	1485	Bethel	1482	51	6-16	13
13	Junction East	Gallatin	McBride & Miller #1 Crane	1-9S-9E	2890; PB 2013	Waltersburg	2000	34; 4	9-29	2
14	Kinmundy North	Marion	Texas #1 C. F. Garrett	10-4N-3E	2295; PB 2065	Bethel	2036	10; 18	6-23	1
15	Locust Grove South	Wayne	Slagter #1 I. F. Allen	8-1S-9E	3394	Rosiclare	3296	71	12-15	1
16	Louisville North	Clay	A. A. Richey #1 M. Green	11-4N-6E	2977	Aux Vases	2759	105; 50	10-27	1
17	Melrose	Clark	B. & G. Oil #1 O. Wells	13-9N-13W	867	Pennsylvanian	839	10; 1	2-17	1
18	Melrose South	Clark	Lewis & Dewey #1 H. Atkins	25-9N-13W	850	Pennsylvanian	865	5; 2	9-29	1
19	Mills Prairie North	Edwards	Paco Pet. #1 F. Knakmuhs	15-1N-14W	3003	Lower Ohara	2925	140	2-10	2
20	North City	Franklin	Nat'l. Assoc. Pet. #1 Epperson "D"	14-6S-1E	2885; PB 2725	Aux Vases	2665	42; 24	12-8	1
21	Patoka South	Marion	C. R. Winn #1 O. G. Singer	4-3N-1E	1355	Cypress	1349	50	10-6	12
22	Posen North	Washington	E. A. Obering #1 Liszewski	9-3S-2W	4112; PB 4051	Trenton	4016	4; 4	10-27	1
23	Prentice	Morgan	E. L. Wirth #1 T. A. Leahy	21-16N-8W	289	Pennsylvanian	247	6	12-8	2
24	Raleigh	Saline	George & Wrather #1 W. H. Lemons	2-8S-6E	3101 PB 2912	Cypress	2552	42; 20	6-23	7
						Aux Vases	2907			
25	Toliver South	Clay	C. O. Smith #1 P. McCullum	1-4N-6E	2880	Aux Vases	2766	56; 100	12-8	1
26	Trumbull West	White	W. C. McBride #1 Jacobs	24-5S-8E	3140	Aux Vases	3122	35; 18	12-15	1
27	Wakefield North	Jasper	A. J. Slagter #1 C. Wilson	5-5N-9E	3122	McClosky	3107	283	6-9	1

A/ Oil and Water.

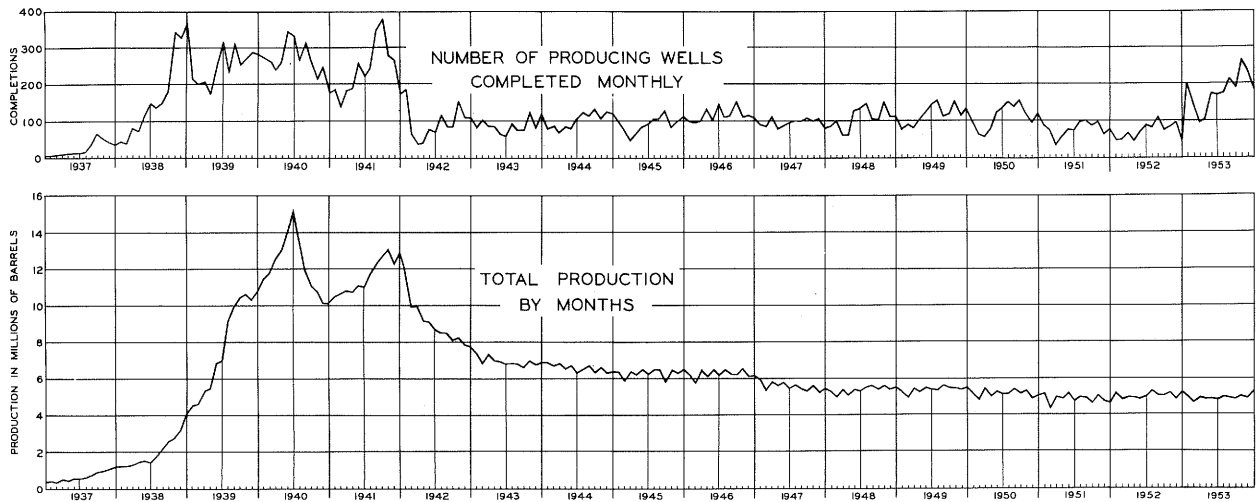


FIG. 2 - NUMBER OF PRODUCING WELLS AND OIL PRODUCTION IN ILLINOIS, 1937 THROUGH 1953.

OIL AND GAS DEVELOPMENTS IN ILLINOIS

TABLE IIB—DISCOVERY WELLS OF EXTENSIONS TO POOLS

LINE NO.	POOL	COUNTY	COMPANY AND FARM	LOCATION	TOTAL DEPTH Ft.	PRODUCING FORMATION	DEPTH TO TOP Ft.	INITIAL PRODUCTION Bbls./Ay	DATE OF COMPLETION
1	Ab Lake West	Gallatin	Lewis & Clemens #1 M. Abell	30-8S-10E	2945; PB 2770	Aux Vases	2748	65; 5	7-21
2	Albion Consol.	Edwards	N. V. Duncan #1 Maxwell-Mosbarger Comm.	15-3S-10E	3226; PB 3052	Bethel	3012	120	2-17
3	Allendale	Lawrence	C. W. & J. E. Kendall #1 R. Ridgely	24-2N-12W	1538	Tar Springs	1537	2; 20	8-18
4	Assumption Consol.	Christian	Collins Bros. #1 E. Arthur	34-14N-1E	2300	Devonian	2283	14; 30	8-4
5	Assumption Consol.	Christian	Bertram & Szepelek #1 Rhoads	35-14N-1E	2410; PB 2352	Devonian	2305	17; 20	12-8
6	Beaver Creek South	Clinton	B. W. Hess #1-A McQuade Comm.	10-3N-3W	1083	Bethel	1080	12; 3	6-9
7	Bungay Consol.	Hamilton	E. J. Cunningham #1 S. L. Moore	10-4S-7E	3454; PB 3348	Lower Ohara	3336	40; 30	11-10
8	Cantrell Consol.	Hamilton	W. J. McGlasson #1 R. Johnson	8-7S-5E	3337; PB 3210	Aux Vases	3190	101; 8	11-3
9	Cantrell Consol.	Hamilton	C. E. Brehm #1 W. Mace et al	9-7S-5E	3353	Aux Vases	3330	178	8-4
10	Clay City Consol.	Clay	Nation Oil #1 H. Blair	17-3N-8E	3080; PB 2938	Aux Vases	2926	15; 20	4-7
11	Clay City Consol.	Jasper	Cullum & Lawhead #1 B. Mattingly	31-6N-10E	2968; PB 2792	Aux Vases	2765	35; 16	6-9
12	Clay City Consol.	Richland	Calvert Drig. #1 A. Fulk	32-3N-9E	3102; PB 3035	McClosky	3011	44; 3	1-20
13	Clay City Consol.	Wayne	W. Misener #1 Riley	26-1S-7E	3401; PB 3235	Aux Vases	3210	35; 10	12-15
14	Clay City Consol.	Wayne	W. Misener #1 J. M. Taylor	12-1N-8E	3185	Lower Ohara	3126	125	1-6
15	Clay City Consol.	Wayne	P. Fulk #1 J. E. Liston	15-1S-7E	3296; PB 3160	Aux Vases	3143	74; 10	5-5
16	Clay City West	Wayne	J. W. Steele #1 B. Leonard	15-2N-7E	3085	McClosky	3079	71; 14	7-7
17	Concord South Consol.	White	Felmont #1 W. M. Ford et al	9-7S-10E	3056; PB 2961	McClosky	2950	5; 20	7-14
18	Dale Consol.	Hamilton	J. T. Turner #1 Johns	2-7S-5E	3240	Aux Vases	3230	35; 123	7-7
19	Dale Consol.	Hamilton	Calvert Drig. #1 Williams-Davis Comm.	2-7S-5E	3225	Aux Vases	3210	125	9-1
20	Divide West	Jefferson	J. F. Dunnill #1 Tate-McDaniel Comm.	27-1S-3E	2822	McClosky	2789	111	7-21
21	Eldorado	Saline	H. E. Howard #1 C. Crawford	8-8S-7E	3022; PB 2948	Hardinsburg	2361	226; 30	7-21
22	Epworth Consol.	White	Hemdon Drig. #1 T. S. Land	25-5S-9E	3115	Rosiclare	3109	45	6-30
23	Evers	Effingham	Wm. D. Griffin #1 Hoelscher	33-8N-7E	2670	Rosiclare	2607	115; 15	12-15
24	Flannigan	Hamilton	Stewart #1 Culpepper	29-6S-5E	3278	Aux Vases	3254	20; 19	6-23
25	Flora	Clay	W. H. Krohn #1 Chambliss	19-3N-7E	2987	McClosky	2981	128	11-10
26	Goldengate Consol.	Wayne	Nash Redwine #1 J. Felix	6-3S-9E	3484; PB 3382	Aux Vases	3352	66; 40	5-19
27	Herald Consol.	White	C. E. Brehm #2 Bayley	16-7S-9E	2906; PB 2660	Cypress	2606	144	1-27
28	Herald Consol.	White	E. J. Cunningham #1 L. Downen	5-7S-9E	3197; PB 2905	Bethel	2894	68	1-20
29	Inman East Consol.	Gallatin	Coy Oil #1 M. S. Wiggers	33-7S-10E	2920; PB 2795	Aux Vases	2775	16; 10	12-1
30	Iron Consol.	White	Calvert Drig. #1 G. W. Mobley Comm.	25-6S-8E	3111; PB 2804	Tar Springs	2332	70; 137	5-12
31	Johnsonville Consol.	Wayne	Miami Oper. #1 B. Butcher	20-1S-6E	3163	McClosky	3154	98	6-23
32	Lawrence West	Lawrence	Big Four Oil #1 E. Staats	13-3N-13W	2229; PB 2120	Aux Vases	2107	160	4-14
33	Maple Grove Consol.	Edwards	W. H. Bears #1 Bennett-Weber Comm.	29-1N-10E	3196	Aux Vases	3181	64; 20	9-1
34	Maple Grove Consol.	Wayne	Boling et al #1-A P. Weber	24-1N-9E	3175	Aux Vases	3146	80; 75	7-7
35	Maple Grove Consol.	Wayne	Don Slape #1 A. Eichmann	22-1N-9E	3419; PB 3220	Aux Vases	3206	6; 80	7-7
36	Omaha South	Gallatin	D. Rotstein #1 C. Woolard	7-8S-8E	3008; PB 2690	Cypress	2537	30; 100	2-3
37	Oskaloosa South	Clay	N. V. Duncan #1 R. Wyman et al	8-3N-5E	2773	McClosky	2770	47	6-2
38	Parkersburg Consol.	Edwards	Calvert Drig. #1 N. Johnson	1-1N-10E	3354; PB 3287	McClosky	3251	71; 17	11-10
39	Prentice	Morgan	E. L. Wirth #1 Robinson	28-16N-8W	258	Pennsylvanian	255	1,048,000 cu. ft.	12-8
40	Raleigh	Saline	Brewer et al #1 J. H. Massey	35-7S-6E	3128; PB 2610	Cypress	2595	6; 10	10-6
41	Rural Hill West	Hamilton	C. E. Brehm #1 McFarland	4-7S-5E	3220	Aux Vases	3206	120; 40	9-15
42	Sailor Springs Consol.	Clay	Magnolia #1 H. G. King	22-3N-7E	2981	Rosiclare	2969	66	9-15
43	Sailor Springs Consol.	Clay	Shulman Bros. #1 S. Ross	28-3N-7E	2993	Rosiclare	2986	75	7-7
44	Sailor Springs Consol.	Clay	Calvert Drig. #1 F. Berthold	18-5N-7E	2932; PB 2889	McClosky	2812	10; 240	7-21
45	Sesser	Franklin	Artnell #1 Phillips "B"	16-5S-2E	2863	Rosiclare	2810	42	12-22
46	Storms Consol.	White	Calvert Drig. #1 J. A. Bachman	1-6S-9E	3257	McClosky	3111	20; 30	1-13
47	Warrenton-Borten	Edgar	C. Watters #2 Jared	19-14N-13W	330	Pennsylvanian	250	5; 8	12-22

A/ Oil and Water.

ALFRED H. BELL AND VIRGINIA KLINE

TABLE IIC—DISCOVERY WELLS OF ADDITIONAL PRODUCING ZONES IN POOLS

LINE NO	POOL	COUNTY	COMPANY AND FARM	LOCATION	TOTAL DEPTH Ft.	PRODUCING FORMATION	DEPTH TO TOP Ft.	INITIAL PRODUCTION Bbls. ^{A/}	DATE OF COMPLETION
1	Centerville	White	Q. B. Mitchell #1 Williams Hrs.	1-4S-9E	3410; PB 3355	Aux Vases	3240	56 B/	9-8
2	Dix	Marion	Ashland #1 G. W. Hiltibidal "A"	28-1N-2E	2140	McClosky	2132	50; 60 C/	8-18
3	Eldorado	Saline	H. E. Howard #1 C. Crawford	8-8S-7E	3022; PB 2948	Hardinsburg	2361	226; 30 C/	7-21
4	Ellery East	Edwards	Herndon Drlg. #1 Cowling Comm.	34-2S-10E	3277	Aux Vases	3205	102; 10	2-24
5	Lawrence West	Lawrence	Big Four Oil #1 E. Staats	13-3N-13W	2229; PB 2120	Aux Vases	2107	160	4-14
6	Lawrence West	Lawrence	N. V. Duncan #1 Pepple	13-3N-13W	2235	McClosky	2221	90	4-14
7	Lexington	Wabash	A. Morris #1 Tanquary Bros.	26-1S-14W	2595	Cypress	2585	71	6-23
8	Merriam*	Wayne	Cullum & Lawhead #1 Hoffee	3-2S-8E	3390; PB 3203	Aux Vases	3021	45; 45	4-7
9	New Harmony Consol.	White	Superior #C-8 H. C. Ford	27-4S-14W	3794	St. Louis	3146	75 C/	2-10
10	Omaha South	Gallatin	D. Rotstein #1 C. Woolard	7-8S-8E	3008; PB 2690	Cypress	2537	30; 100	2-3
11	Patoka East	Marion	J. L. Lester et al #1 S. A. Clark "D"	34-4N-1E	3078; PB 1688	McClosky	1639	18	2-24
12	Sesser	Franklin	Artnell #2 Phillips "B"	16-5S-2E	2461	Cypress	2456	28; 6	12-15
13	Weaver	Clark	W. W. Dayton #3 Cole	19-11N-10W	2089; PB 1620	Cole	1564	20	11-24

^{A/} Oil and water.^{B/} Producing from 3 pays.^{C/} Producing from 2 pays.

* Now in Clay City Consol.

TABLE IID—SELECTED LIST OF DRY TESTS IN ILLINOIS IN 1953

LINE NO.	POOL	COUNTY	COMPANY AND FARM	LOCATION	TOTAL DEPTH Ft.	DEEPEST FORMATION	DEPTH TO TOP Ft.	DATE OF COMPLETION
1	Ayers	Bond	W. Duncan #1 L. B. Turner Comm.	20-6N-3W	2325	Silurian	2214	6-9-53
2		Brown	Chas. Measley #1 F. H. Manny	19-1S-4W	968	Trenton	886	5-12-53
3		Champaign	Chas. Bates #1 Cole	36-18N-8E	2800	Shakopee	2295	12-1-53
4	Clay City West	Clay	J. W. Steele #1 R. Leak	15-2N-7E	4973	Devonian	4738	10-20-53
5	Iola Consol.	Clay	P. D. Lynch #2 Wade	3-5N-5E	4078	Devonian	4002	2-3-53
6	Flat Rock	Crawford	R. M. Kintop #1 Butcher	25-6N-12W	3107	Devonian	2977	8-25-53
7	Bellair	Crawford	L. Harris #2 H. Short	13-8N-14W	2686	Devonian	2539	6-9-53
8		DeWitt	R. J. Stevens #1 Davenport-Jasper Comm.	12-19N-2E	1628	Niagaran	1210	10-20-53
9	Dudley	Edgar	M. L. Livingood #3 R. A. Stoneburner	3-13N-13W	1348	Devonian	1313	4-21-53
10		Hardin	St. Joseph Lead Co. #1 H. Hamp, Jr.	30-11S-8E	2948	Everton	1991	4-14-53
11	Roaches North	Jefferson	Texas #11 E. Kasban	8-2S-1E	3680	Devonian	3586	12-1-53
12	Woodlawn*	Jefferson	Magnolia #9 Eubanks-Winesburg Unit	35-2S-1E	5101	Plattin	5074	1-6-53
13		Knox	L. J. Heller #1 Norman	27-11N-4E	1435	Glenwood	1365	2-10-53
14	Blackland*	Macon	Sun Oil #1 J. F. Damery	5-15N-1E	3780	Shakopee	3116	5-12-53
15		Macon	Sun Oil #1 W. W. Graves	3-16N-1W	2746	St. Peter	2622	11-24-53
16		Macoupin	D. Gerhardt #1 M. T. Launer	23-12N-8W	1390	Silurian	1375	6-16-53
17	Waverly	Morgan	Panhandle Eastern #1 Doolin	16-13N-8W	2071	Shakopee	2064	12-1-53
18		Peoria	Blue Ridge Oil #1 Connelly	3-11N-8E	1365	Galena	1285	4-7-53
19	Tamaroa*	Perry	Ted Glass #1 S. George	23-4S-1W	3086	Devonian	2942	1-13-53
20		Perry	Jet Oil #1 Schwarz	25-5S-4W	2834	Devonian	2754	8-11-53
21	Olney South*	Richland	Sun Drlg. #1 R. Paddock "B"	9-3N-10E	4910	Devonian	4759	10-20-53
22		St. Clair	W. G. Grossmann #1 Mueller-Miller Comm.	30-1S-8W	1530	Trenton	1448	2-24-53
23		Vermillion	A. P. Lucht #1 E. Miller	12-17N-13W	2515	Trenton	2391	5-19-53
24	Dubois	Washington	J. L. Lester #1-T Bender	20-3S-1W	4217	Plattin	4212	12-1-53

* Plugged back to production.

TABLE IV—ILLINOIS COMPLETIONS AND PRODUCTION SINCE JANUARY 1, 1936

PERIOD OF TIME	NUMBER OF COMPLETIONS (A/)	NUMBER OF PRODUCING WELLS	PRODUCTION (M. Bbls.)		
			NEW FIELDS	OLD FIELDS (B/)	TOTAL (C/)
1936	93	52			4,445
1937	449	292	2,884	4,542	7,426
1938	2,536	2,010	19,771	4,304	24,075
1939	3,617	2,970	90,908	4,004	94,912
1940	3,755	3,080	142,969	4,678	147,647
1941	3,807	2,925	128,993	5,145	134,138
1942	2,017	1,179	101,837	4,753	106,590
1943	1,791	1,090 (20) D/	77,581	4,675	82,256
1944	1,991	1,229 (12)	72,946	4,467	77,413
1945	1,763	1,094 (15)	70,839	4,371	75,210
1946	2,362	1,387 (17)	70,174	5,123	75,297
1947	2,046	1,102 (22)	61,455	5,004	66,459
1948	2,489	1,316 (21)	59,623	5,185	64,808
1949	2,741	1,447 (32)	58,571	5,930	64,501
1950	2,894	1,328 (23)	55,794	6,234	62,028
1951	2,383	947 (23)	54,147	6,097	60,244
1952	2,077	854 (35)	53,727	6,344	60,071
1953					
January	202	100 (6)	4,424	580	5,004
February	140	61 (3)	4,088	541	4,629
March	94	53 (8)	4,348	582	4,930
April	103	59 (6)	4,240	617	4,857
May	175	83 (5)	4,251	597	4,848
June	169	84 (11)	4,228	592	4,820
July	173	87 (6)	4,325	624	4,949
August	215	105 (9)	4,274	600	4,874
September	189	106 (10)	4,265	599	4,864
October	276	143 (7)	4,407	605	5,012
November	237	156 (11)	4,355	576	4,931
December	188	124 (6)	4,719	588	5,307
	2,161	1,161 (88)	51,924	7,101	59,025

A/ Includes only oil and gas producers and dry holes.

B/ Includes Devonian production at Bartelso and Sandoval.

C/ From the U. S. Bureau of Mines through 1951; 1952 and 1953 from Illinois Basin Scout Association Pipe Line Production Report.

D/ Figures in parentheses refer to number of producing wells included in total which had previously been completed as dry holes.

TABLE VA—WILDCAT WELLS DRILLED IN ILLINOIS IN 1953

WILDCAT NEAR (A/)			WILDCAT FAR (B/)					
TOTAL	PRODUCERS	PERCENTAGE SUCCESSFUL	TOTAL	PRODUCERS	PERCENTAGE SUCCESSFUL	TOTAL WILDCATS	TOTAL PRODUCERS	PERCENTAGE SUCCESSFUL
354	52	14.7	169	11	6.5	523	63*	12.0

A/ From $\frac{1}{2}$ to 2 miles from production.

B/ More than 2 miles from production.

* Four of the discovery wells reported in Table IIA and 7 of those in Table IIB were originally completed as dry holes and later reworked into producers.

TABLE VB—WILDCAT FAR WELLS CLASSIFIED BY METHOD OF LOCATION

METHOD OF LOCATION	TOTAL	PRODUCERS	PERCENTAGE SUCCESSFUL
Geology	129	8	6.2
Geophysics	25	2	8.0
Non-scientific	15	1	6.7
Total	169	11	6.5

ALFRED H. BELL AND VIRGINIA KLINE

TABLE VI—SUMMARY OF DRILLING AND INITIAL PRODUCTION (1/)

	NUMBER OF WELLS DRILLED IN 1953						TOTAL INITIAL PRODUCTION		FOOTAGE DRILLED IN 1953	
	TOTAL	TOTAL PRODUCING		TOTAL DRY HOLES			OIL	GAS	PRODUCING WELLS	TOTAL
	COM- PLETIONS	OIL	GAS	IN POOLS	WILDCAT NEAR (2/)	WILDCAT FAR (3/)	Bbls.	MMcf		
Bond	14	0	0	5	2	7	0	0	0	25,288
Brown	1	0	0	0	0	1	0	0	0	968
Champaign	2	0	0	0	0	2	0	0	0	3,715
Christian	34	20	0	5	1	8	1,902	0	43,902	74,335
Clark	41	9	0	12	10	10	120	0	10,037	41,900
Clay	119	58	0	34	23	4	7,546	0	167,378	357,943
Clinton	68	11	0	18	26	13	406	0	23,757	101,538
Coles	10	1	0	2	2	5	20	0	1,834	10,831
Crawford	74	28	0	38	7	1	528	0	33,060	93,750
Cumberland	9	2	0	6	1	0	6	0	908	6,841
DeWitt	1	0	0	0	0	1	0	0	0	1,628
Edgar	24	7	1	8	4	4	106	1,000	3,185	14,019
Edwards	119	68	0	36	15	0	5,425	0	211,066	374,051
Effingham	19	4	0	6	7	2	238	0	10,019	50,156
Fayette	18	6	0	5	4	3	102	0	10,321	34,927
Franklin	16	7	0	3	3	3	242	0	18,938	46,095
Gallatin	83	47	0	22	13	1	3,161	0	120,483	223,711
Hamilton	99	48	0	29	19	3	4,399	0	154,313	326,456
Hancock	2	0	0	0	1	1	0	0	0	1,005
Hardin	1	0	0	0	0	1	0	0	0	2,948
Jackson	3	0	0	0	1	2	0	0	0	3,833
Jasper	30	8	0	14	5	3	680	0	23,589	85,074
Jefferson	52	25	0	16	9	2	1,765	0	66,093	142,034
Jersey	1	0	0	0	0	1	0	0	0	640
Knox	1	0	0	0	0	1	0	0	0	1,435
Lawrence	106	53	0	35	15	3	2,634	0	86,044	190,361
Logan	1	0	0	0	0	1	0	0	0	1,650
McDonough	4	1	0	2	0	1	4	0	490	1,823
Macor	6	1	0	0	0	5	13	0	2,047	15,680
Macoupin	14	0	1	4	4	5	0	0,200	492	8,713
Madison	53	11	1	24	9	8	174	4,500	6,617	43,955
Marion	120	83	0	20	14	3	6,835	0	164,439	249,652
Montgomery	13	0	0	2	4	7	0	0	0	21,943
Morgan	8	1	1	4	1	1	6	1,048	541	6,745
Moultrie	2	0	0	1	0	1	0	0	0	4,327
Peoria	1	0	0	0	0	1	0	0	0	1,365
Perry	10	1	1	1	0	7	12	2,500	2,242	22,310
Randolph	22	17	0	1	1	3	4,364	0	37,932	46,959
Richland	69	31	0	18	20	0	1,775	0	91,404	214,288
St. Clair	7	0	0	0	1	6	0	0	0	13,067
Saline	43	26	0	12	15	0	2,853	0	71,440	125,607
Shelby	4	0	0	0	0	4	0	0	0	8,055
Vermilion	2	0	0	0	0	2	0	0	0	4,215
Wabash	115	59	0	47	9	0	4,443	0	134,234	269,414
Washington	90	39	0	19	14	18	3,086	0	83,315	178,135
Wayne	383	260	0	96	27	0	27,945	0	827,720	1,239,110
White	247	136	0	83	25	3	13,340	0	385,434	741,095
	2,161	1,068	5	628	302	158	94,130	9,248	2,793,274	5,433,590

1/ Does not include input wells, salt water disposal wells, or old wells worked over.

2/ Wells drilled between one-half mile and two miles from production.

3/ Wells drilled more than two miles from production.

TABLE VII—NUMBER OF GEOPHYSICAL AND CORE DRILLING CREWS ACTIVE IN ILLINOIS DURING 1953 BY MONTHS

	Jan.	Feb.	Mar.	Apr.	May	June	July	Aug.	Sept.	Oct.	Nov.	Dec.
Seismograph	9	8	5	5	4	3	3	5	3	2	1	2
Gravity Meter	0	0	0	0	0	0	0	0	0	0	1	1
Core Drilling	1	1	1	1	1	1	1	1	1	2	2	0
Magnetometer	0	0	0	0	0	0	0	0	0	1	1	1