

IP 132

Catalog of cores from the sub-Galena Group in Illinois

Thomas H. Shaw
Michael L. Sargent

ILLINOIS PETROLEUM 132 1989

Department of Energy and Natural Resources
ILLINOIS STATE GEOLOGICAL SURVEY

Catalog of cores from the sub-Galena Group in Illinois

**Thomas H. Shaw
Michael L. Sargent**

ILLINOIS PETROLEUM 132 1989

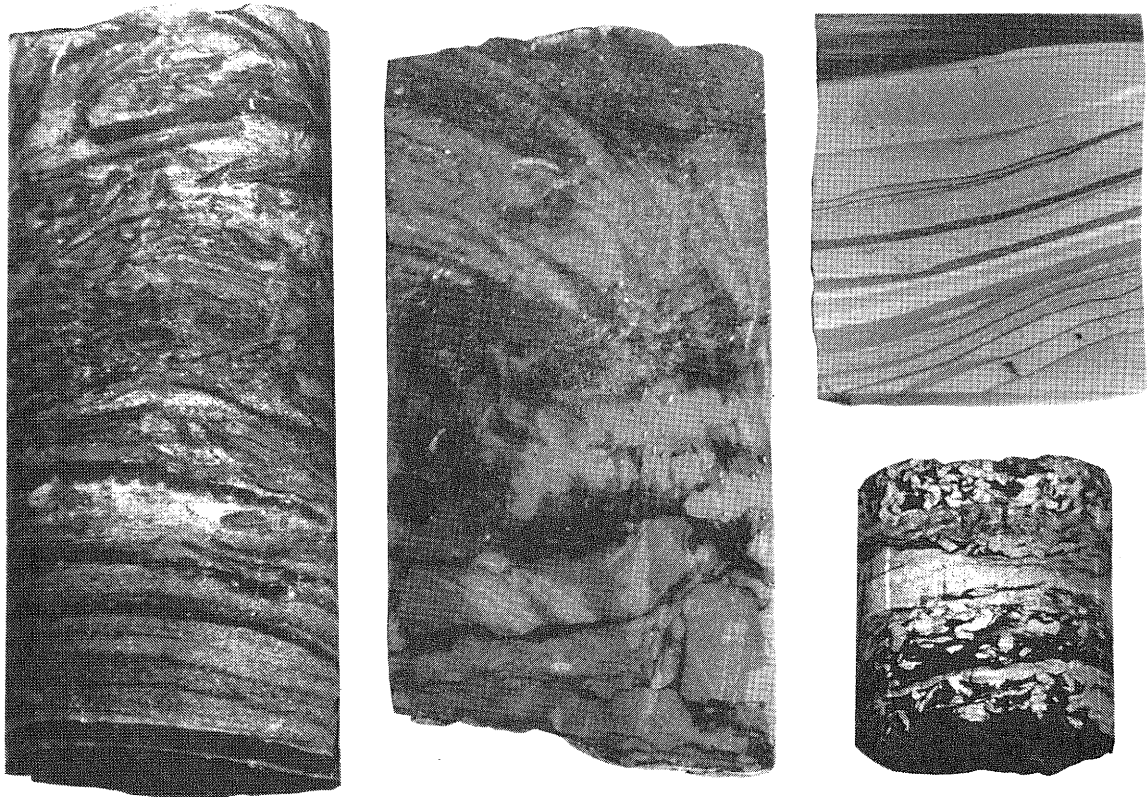
ILLINOIS STATE GEOLOGICAL SURVEY

Morris W. Leighton, Chief

Natural Resources Building

615 East Peabody Drive

Champaign, Illinois 61820



Sub-Galena Group cores: *left*, edgewise conglomerate from the Davis Member, Franconia Formation, Central Illinois Light Co., Witte #701, C9240, depth 2232 feet, sec. 11-T13N-R5E, Stark Co., IL; *center*, contact between the Galena Group and the finer grained Platteville Group, Superior Oil Co., H.C. Ford et al., #C-17, C2740, depth 6533 feet, sec. 27-T4S-R14W, White Co., IL; *above right*, interbedded dolomite and shale (dark) of the Shakopee Dolomite, R.E. Davis Co., South #1, C4213, depth 1497 feet, sec. 30-T16N-R1E, Henry Co., IL; *lower right*, interbedded shales (dark), containing compacted silt-filled desiccation cracks, and lighter colored siltstones from the Proviso Member, Eau Claire Formation, Northern Illinois Gas Co., Houck #1, C10,181, depth 3291 feet, sec. 19-T26N-R3E, McLean Co., IL.

INTRODUCTION

Lower Paleozoic rocks in the Illinois Basin are currently the focus of much interest as potential reservoirs for hydrocarbons and sites for waste disposal, natural gas storage, and compressed-air energy storage. The interest in these possibilities was the impetus for compiling this catalog, which provides a reference to the cores on file at the Illinois State Geological Survey (ISGS) of sub-Galena Group strata. The nomenclature for this stratigraphic interval in Illinois is shown in figure 1.

The following information is given for each core: the ISGS reference number, company and well name, locality description, county, logging datum (elevation in feet), total depth (in feet), date drilled, and sample type (core chips, complete core, etc.). Where available, stratigraphic intervals and contacts are given. Cores are organized alphabetically by county, and maps are provided to show the geographic distribution of the cores by stratigraphic interval (fig. 2 to 6).

Sample types include core chips, core biscuits, and complete cores of various diameters. Core chips include irregularly shaped rock fragments that are generally 1 to 3 inches maximum dimension, are smaller than the full diameter of the core, are obtained at somewhat regular intervals, and are lithologically representative of the interval. Core biscuits are samples 5 to 10 inches in length, the full diameter or half-slab of the core, considered to be representative of the interval, and equal to 10 to 20 percent of the original length. Complete cores refer to cores that are vertically continuous. These include 1) quarter-splits, slabbed and split again to a 25 percent wedge of the original core; 2) half-splits, slabbed and 50 percent of the original diameter retained; and 3) complete cores (100 percent of the diameter retained) of sizes "AX" (1.06- to 1.18-inch), "BX" (1.43- to 1.65-inch), "NX" (1.88- to 2.15-inch), 2.5-inch, 3-inch, 3.5-inch, 4-inch, 5-inch, and 6-inch diameter.

The stratigraphic tops and bottoms given are based on studies by Illinois State Geological Survey personnel and others as indicated on logs filed in the Geological Records Unit of the ISGS. The formation assignments and contacts have been checked to the extent that was practical. The stratigraphic nomenclature as reported originally on the sample logs is generally retained. Where sample studies or core studies are unavailable, the stratigraphic data are based on the authors' interpretations of geophysical logs.

In using this catalog, the reader should keep in mind that the sample studies available were made over a period of nearly 100 years--the oldest core on file was cut in 1889. The stratigraphic data should be used as *general* guidelines to the cored interval. The core should be examined to determine the exact position of contacts and stratigraphic units present.

Most cores from central and southern Illinois and the most significant cores from northern Illinois are listed; additional undescribed cores that penetrate sub-Galena Group strata in northern Illinois may be available and may not have been included in this document. Should the reader be aware of any cores not listed here or note any errors, please contact the authors.

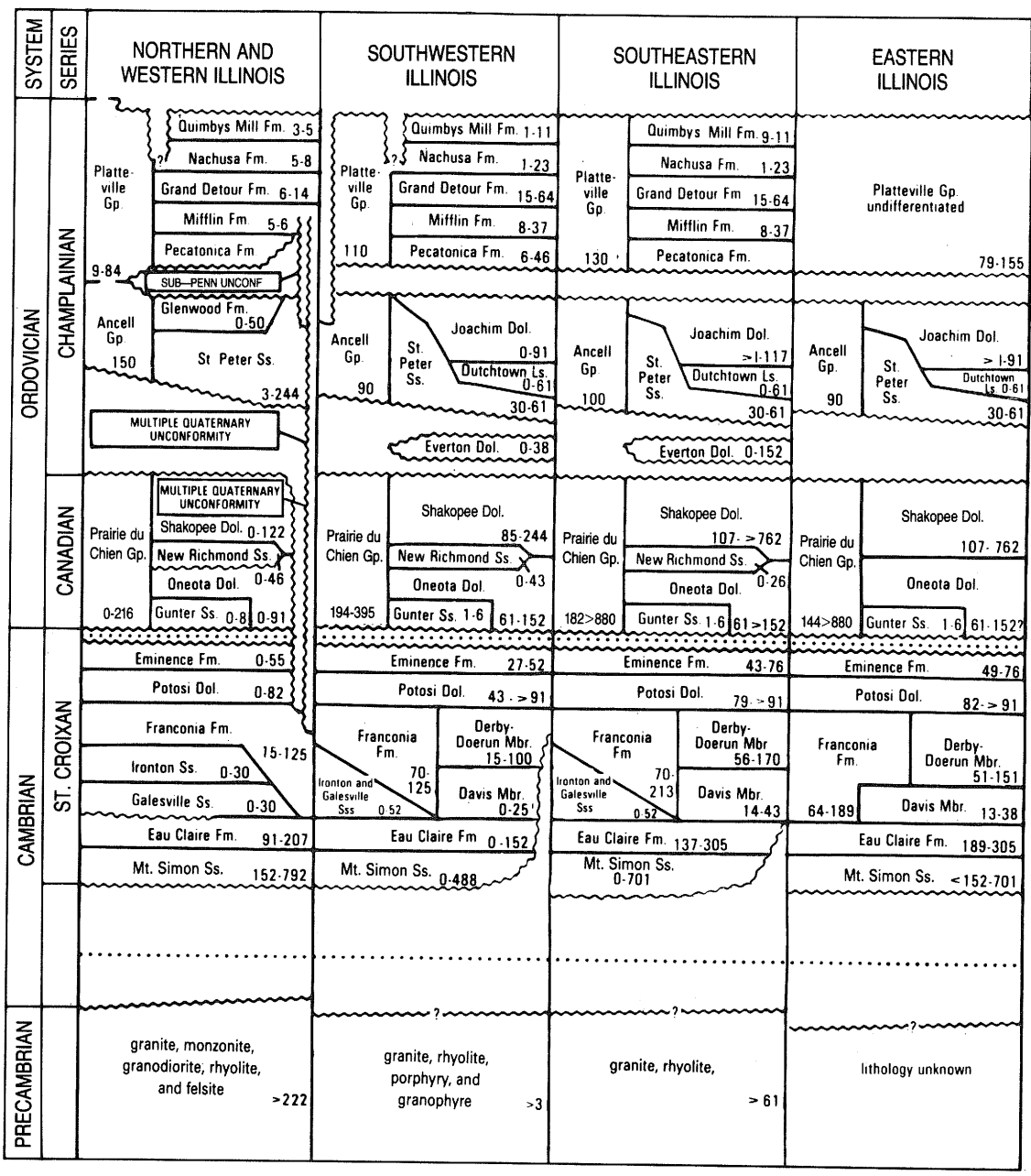


Figure 1 Stratigraphic nomenclature for sub-Galena Group units in Illinois. Modified from COSUNA correlation chart (Shaver and others, 1985).

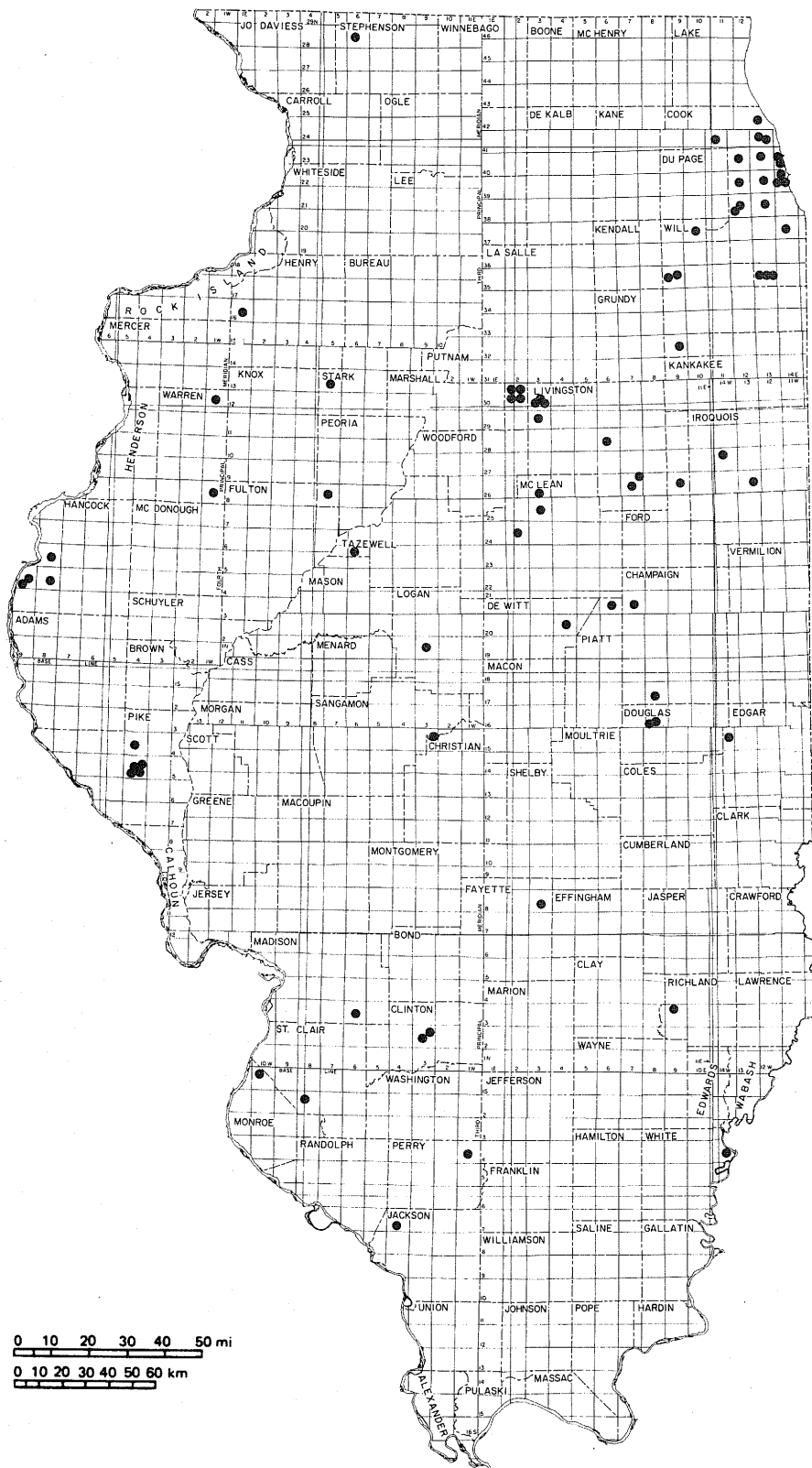


Figure 2 Cores from the Platteville Group.

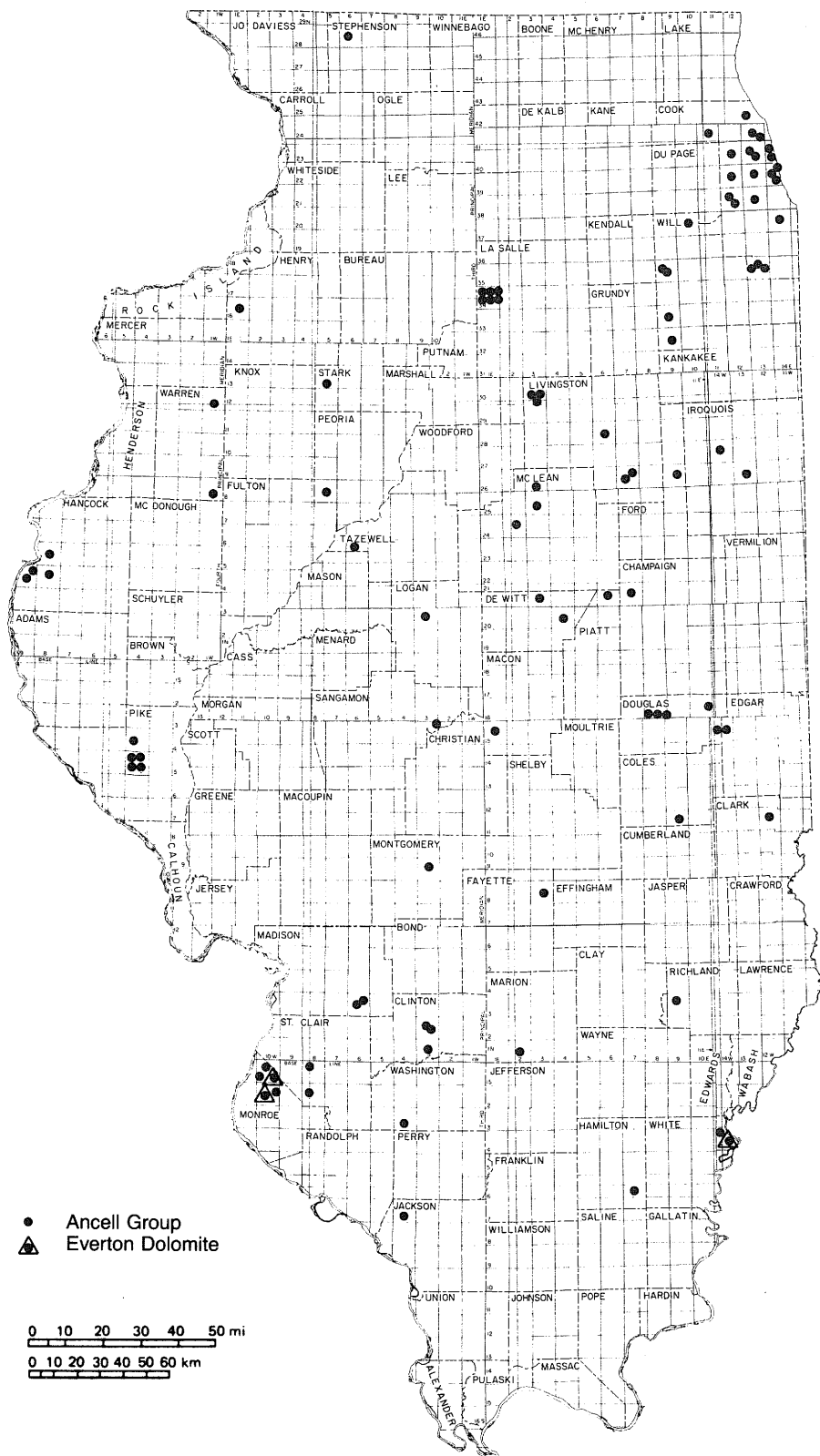


Figure 3 Cores from the Ancell Group and Everton Dolomite.

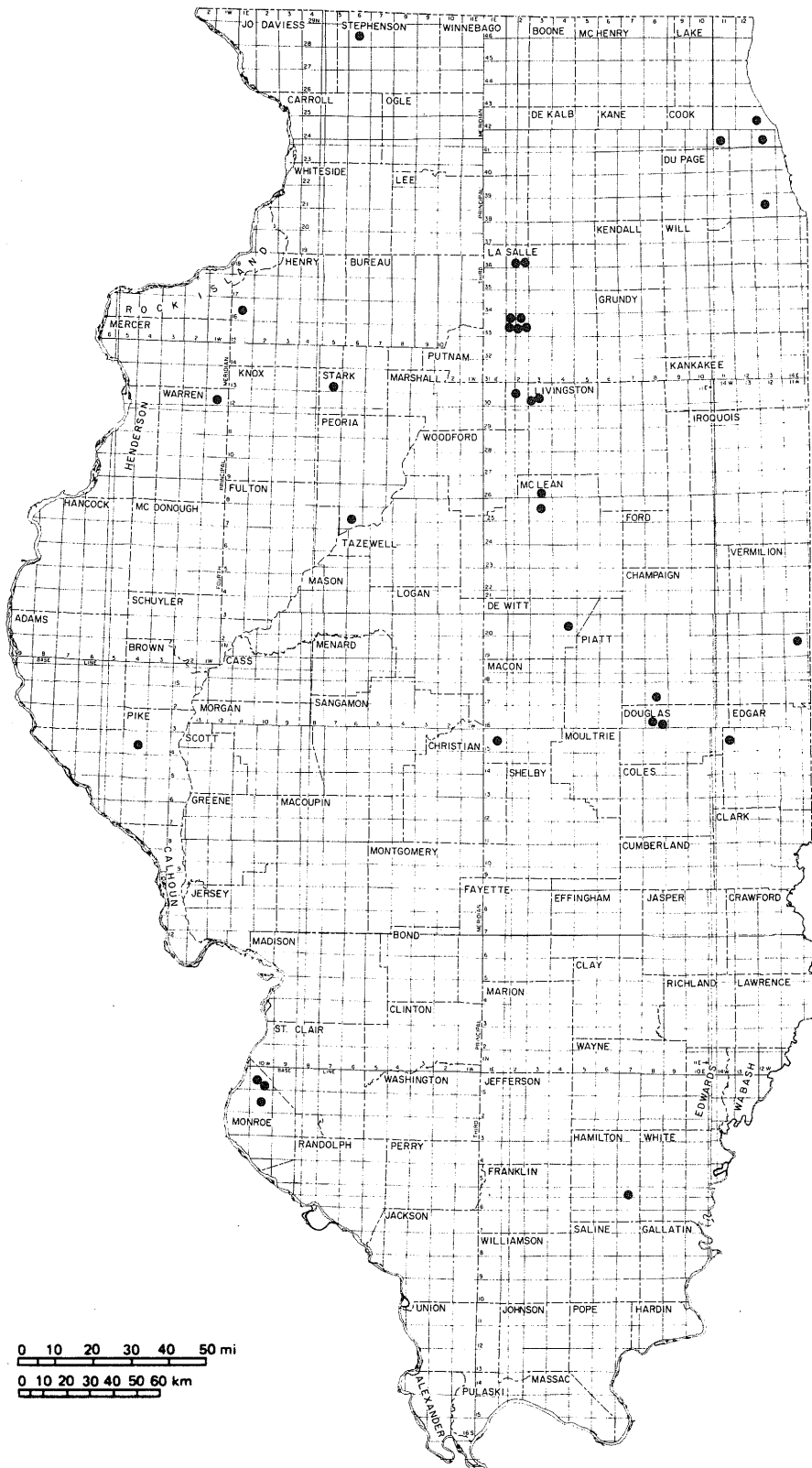


Figure 4 Cores from the Prairie du Chien Group.

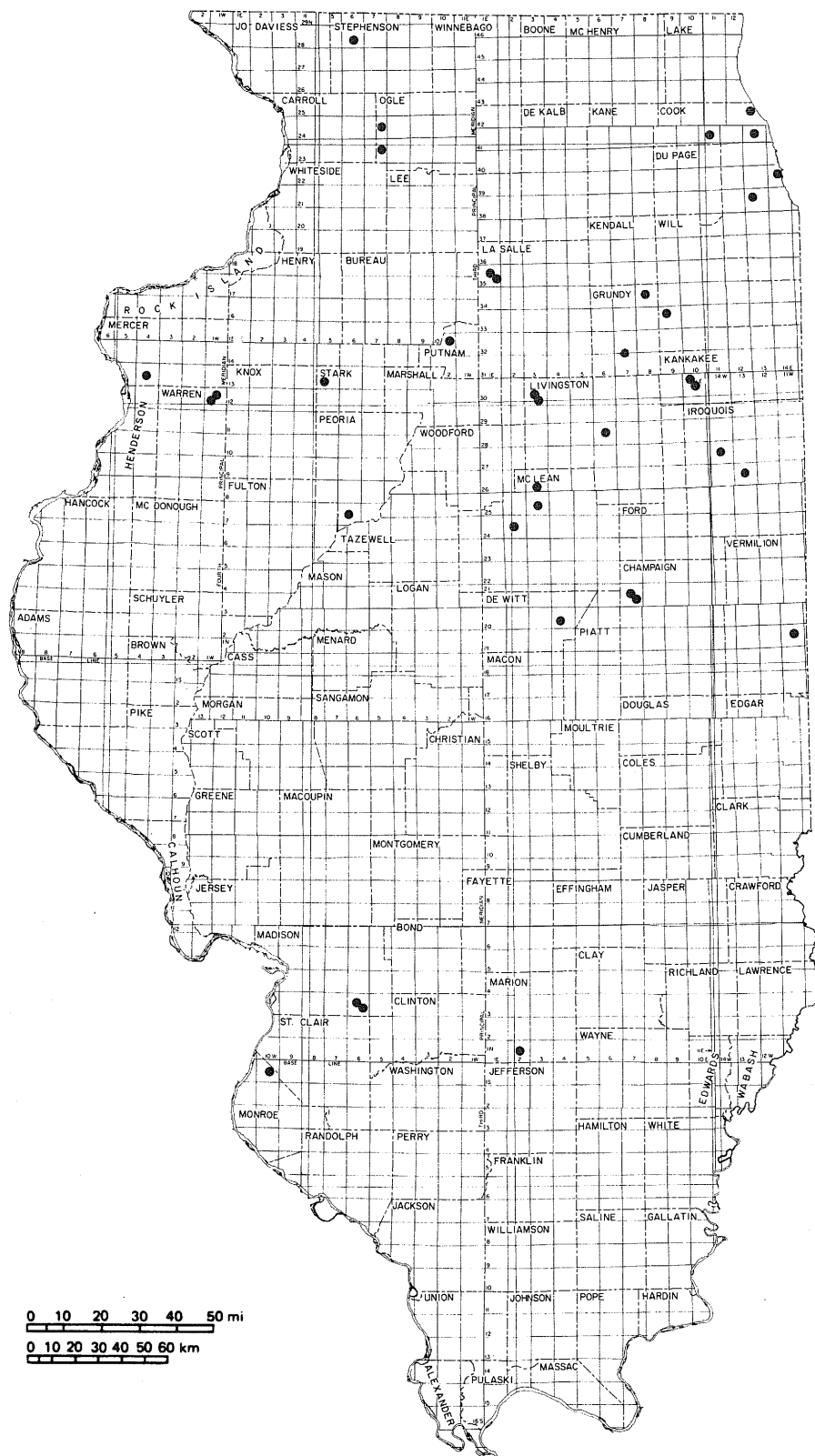


Figure 5 Cores from the Cambrian System.

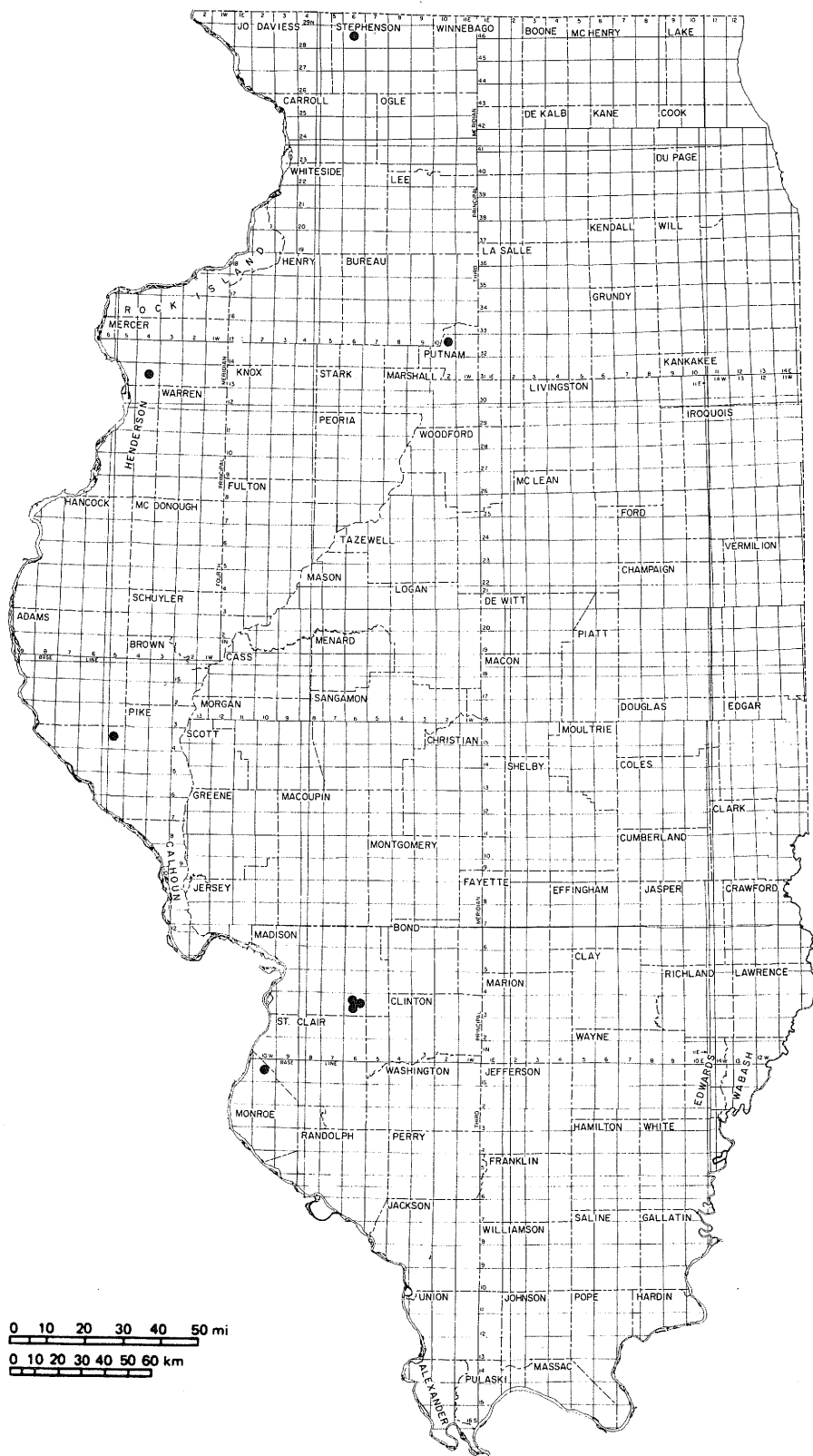


Figure 6 Cores that penetrate the Precambrian crystalline basement.

ABBREVIATIONS

Co.	company or county
Dol.	dolomite
elev.	elevation
ETM	estimated from topographic maps
Fm.	formation
Gp.	group
Ir.	irregular
Mbr.	member
Ss.	sandstone
TD	total depth

Information is given in the following order: ISGS reference number, company and well name, locality description, county, logging datum (elevation in feet), total depth (in feet), date drilled, and sample type. Stratigraphic intervals and contacts are provided where available.

CORES BY COUNTY

CHAMPAIGN COUNTY

C4006 Union Hill Gas Storage Co. George Webster #1 17-21N-7E Champaign Co. elev. 758
TD 4100 1959 core chips 3125-3993

Cambrian System

Franconia Fm. 2945-3154
Ironton-Galesville Ss. 3154-3302
Eau Claire Fm. 3302-3900
Mt. Simon Ss. 3900-4100 (TD)

C4267 Union Hill Gas Storage Co. A.G. Hunt #1 16-21N-7E Champaign Co. elev. 744
TD 1815 1960 core chips 1487-1584

Ordovician System

Galena Gp. 1076-1217
Platteville Gp. 1217-1487
Ansell Gp. 1487-1815 (TD)

C4387 Peoples Gas, Light, & Coke Fee #1 9-21N-7E Champaign Co. elev. 756 TD 4093
1962 core chips 3135-3285, 3770-3976

Cambrian System

Galesville Ss. 3135-3160 (cored interval)
Eau Claire Fm. 3160-3878
Mt. Simon Ss. 3878-4093 (TD)

C4830 Illinois Power Co. Arnold Koss #1* 21-17N-8E Champaign Co. elev. 699 TD 1805
1961 4-inch core 1028-1054; and 4-inch core, condensed to 10%, 1797-1804

Ordovician System

Platteville Gp. 1028-1054 (cored interval)
Prairie du Chien Gp. 1797-1805 (TD)

*core interfiled with C4829 and C4218, Douglas Co.

CLARK COUNTY

C8737 Velsicol Chemical Co. #2 12-11N-12W Clark Co. elev. 639 TD 6000 1971
4-inch core chips 3343-3371, 4060-4111

Ordovician System

Ansell Gp.
Joachim Dol. 4020-4120
St. Peter Ss. 4120-4168

CLINTON COUNTY

C228 C. B. Sowell et al. Schlawfly #1* 3-2N-3W Clinton Co. elev. 460 TD 4120 1940
select 2.5-inch core 2600-4120

Ordovician System

Maquoketa Gp. 3250-3434
Galena Gp. 3434-3558
Platteville Gp. 3558-3934
Ansell Gp.
Joachim Dol. 3934-4113
St. Peter Ss. 4113-4120 (TD)

*see C2084

CLINTON COUNTY *continued*

C1048 P. Mosebach Benard Schlarmann #1 9-1N-3W Clinton Co. elev. 499 TD 4212 1941
core chips 4194-4212

Ordovician System
Ansell Gp.
St. Peter Ss. 4175-4212 (TD)

C2084 C. B. Sowell et al. Schlaflly #1* 3-2N-3W Clinton Co. elev. 460 TD 4120 1940
core chips 2600-4120

*see C228

COLES COUNTY

C3533 Magnolia Oil Co. M. T. Rodda #1 4-11N-9E Coles Co. elev. 609 TD 5389 1957
core chips 5241-5269

Ordovician System
Ansell Gp.
Joachim Dol. 5144-5237
St. Peter Ss. 5237-5365

COOK COUNTY

C4333 Northern Illinois Gas Co. #147-1 29-35N-13E Cook Co. elev. 728 ETM TD 1155
1960 4-inch core 966-1127

Ordovician System
Platteville and Ansell Gps. 966-1127 (cored interval)

C4334 Northern Illinois Gas Co. #147-13* 29-35N-13E Cook Co. elev. 732 ETM TD 1007
1960 core chips 958-990

Ordovician System
Platteville Gp. 958-983 (cored interval)
Ansell Gp.
St. Peter Ss. 983-1007 (TD)

*see C6127

C4335 Northern Illinois Gas Co. #147-7* 29-35N-13E Cook Co. elev. 732 ETM TD 1008
1960 4-inch core 955-979, 990-996

Ordovician System
Platteville Gp. 955-979 (cored interval)
Ansell Gp.
St. Peter Ss. 990-996 (cored interval)

*see C6128

C6127 Northern Illinois Gas Co. #147-13* 29-35N-13E Cook Co. elev. 732 ETM TD 1007
1960 plugs from 4-inch core 958-991

*see C4334

C6128 Northern Illinois Gas Co. #147-7* 29-35N-13E Cook Co. elev. 732 ETM TD 1008
1960 plugs from 4-inch core 955-996

*see C4335

COOK COUNTY *continued*

C7214 Chicago Sanitary District DH-9 25-37N-14E Cook Co. elev. 588 TD 1047 1968
core chips 103-1047

Ordovician System

Galena Gp. 664-856
Platteville Gp. 856-993
Ansell Gp. 993-1047 (TD)

C9471 Metropolitan Sanitary District-Chicago DH-71-65 (F-9) 25-41N-11E Cook Co. elev. 660
TD 1435 1971 NX core 81-1432

Ordovician System

Galena Gp. 436-629
Platteville Gp. 629-758
Ansell Gp.
Glenwood Fm. 758-763
St. Peter Ss. 763-978
Kress Mbr. 969-978
Prairie du Chien Gp.
Oneota Dol. 978-1003
Gunter Ss. 1003-1021

Cambrian System

Eminence Dol. 1021-1036
Potosi Dol. 1036-1114
Franconia Fm. 1114-1196
Ironton-Galesville Ss. 1196-1324
Eau Claire Fm. 1324-1435 (TD)

C9472 Metropolitan Sanitary District-Chicago DH-71-43 (77) 5-38N-13E Cook Co. elev. 598
TD 1460 1971 NX core 79-1460

Ordovician System

Galena Gp. 534-725
Platteville Gp. 725-857
Ansell Gp.
Glenwood Fm. 857-862
St. Peter Ss. 862-993
Kress Mbr. 988-993
Prairie du Chien Gp.
Oneota Dol. 993-1094

Cambrian System

Eminence Dol. 1094-1122
Potosi Dol. 1122-1309
Franconia Fm. 1309-1412
Ironton Ss. 1412-1460 (TD)

C9473 Metropolitan Sanitary District-Chicago DH-71-57 (54) 9-39N-14E Cook Co. elev. 589
TD 1441 1971 NX core 121-1441

Ordovician System

Galena Gp. 583-801
Platteville Gp. 801-898
Ansell Gp.
Glenwood Fm. 898-901
St. Peter Ss. 901-1266
Kress Mbr. 1263-1266

Cambrian System

Potosi Dol. 1266-1297
Franconia Fm. 1297-1394
Ironton Ss. 1394-1441 (TD)

C9474 Metropolitan Sanitary District-Chicago DH-71-7(28) 26-41N-13E Cook Co. elev. 602
TD 1296 1971 NX core 84-1296

Ordovician System

Galena Gp. 537-735
Platteville Gp. 735-865
Ansell Gp.
Glenwood Fm. 865-867
St. Peter Ss. 867-1037
Kress Mbr. 1025-1037
Prairie du Chien Gp.
Oneota Dol. 1037-1088
Gunter Ss. 1088-1093

Cambrian System

Eminence Dol. 1093-1103
Potosi Dol. 1103-1190
Franconia Fm. 1190-1296 (TD)

COOK COUNTY *continued*

C9475 Metropolitan Sanitary District-Chicago DH-71-9 (31) 35-42N-13E Cook Co. elev. 593
TD 1341 1971 NX core 99-1341

Ordovician System

Galena Gp. 529-731
Platteville Gp. 731-851
Ansell Gp.
Glenwood Fm. 851-855
St. Peter Ss. 855-936
Kress Mbr. 934-936
Prairie du Chien Gp.
Oneota Dol. 936-1033

Cambrian System

Eminence Dol. 1033-1053
Potosi Dol. 1053-1186
Franconia Fm. 1186-1279
Iron-ton-Galesville Ss. 1279-1341 (TD)

C9656 Metropolitan Sanitary District-Chicago DH-71-81 (F-2) 22-40N-12E Cook Co. elev. 618
TD 816 1971 NX core 70-816

Ordovician System

Galena Gp. 473-664
Platteville Gp. 664-793
Ansell Gp.
Glenwood Fm. 793-799
St. Peter Ss. 799-816 (TD)

C9970 Metropolitan Sanitary District-Chicago DH-71-28 (10) 30-41N-13E Cook Co. elev. 624
TD 850 1971 NX core 120-849.9

Ordovician System

Galena Gp. 506-703
Platteville Gp. 703-828
Ansell Gp.
Glenwood Fm. 828-833
St. Peter Ss. 833-849.9 (TD)

C9974 Metropolitan Sanitary District-Chicago DH-71-86 (F-6) 26-39N-12E Cook Co. elev. 619
TD 836 1971 NX core 40-836

Ordovician System

Galena Gp. 504-694
Platteville Gp. 694-817
Ansell Gp.
Glenwood Fm. 817-820
St. Peter Ss. 820-836 (TD)

C9975 Metropolitan Sanitary District-Chicago DH-71-48 (50) 30-40N-14E Cook Co.
elev. 590 ETM TD 886 1971 NX core 70-886

Ordovician System

Galena Gp. 534-739
Platteville Gp. 739-869
Ansell Gp.
Glenwood Fm. 869-872
St. Peter Ss. 872-886 (TD)

COOK COUNTY *continued*

- C9977 Metropolitan Sanitary District-Chicago DH-71-10 (45) 12-40N-13E Cook Co. elev. 600
TD 901 1971 NX core 81-901
Ordoevician System
Galena Gp. 556-757
Platteville Gp. 757-886
Ansell Gp.
Glenwood Fm. 886-892
St. Peter Ss. 892-901 (TD)
- C9979 Metropolitan Sanitary District-Chicago DH-71-91 (67) 16-39N-14E Cook Co. elev. 587
TD 912.9 1971 NX core 79.8-912.9
Ordoevician System
Galena Gp. 574-773
Platteville Gp. 773-897
Ansell Gp.
Glenwood Fm. 897-902
St. Peter Ss. 902-912.9 (TD)
- C9981 Metropolitan Sanitary District-Chicago DH-71-41 (74) 35-39N-13E Cook Co. elev. 598
TD 856 1971 NX core 70-856
Ordoevician System
Galena Gp. 506-704
Platteville Gp. 704-837
Ansell Gp.
Glenwood Fm. 837-856
St. Peter Ss. 840-856 (TD)
- C9985 Metropolitan Sanitary District-Chicago DH-71-13 (72) 32-39N-14E Cook Co. elev. 593
TD 910.6 1971 NX core 62-910.6
Ordoevician System
Galena Gp. 555-754
Platteville Gp. 754-877
Ansell Gp.
Glenwood Fm. 877-883
St. Peter Ss. 883-910.6 (TD)
- C9987 Metropolitan Sanitary District-Chicago DH-71-60 (Q-2) 22-38N-12E Cook Co. elev. 613
TD 846 1971 NX core 20-846
Ordoevician System
Galena Gp. 506-698
Platteville Gp. 698-831
Ansell Gp.
Glenwood Fm. 831-836
St. Peter Ss. 836-846 (TD)
- C9992 Metropolitan Sanitary District-Chicago DH-71-56 (Q-1) 9-38N-12E Cook Co. elev. 650
TD 856 1971 NX core 20-856
Ordoevician System
Galena Gp. 511-701
Platteville Gp. 701-836
Ansell Gp.
Glenwood Fm. 836-839
St. Peter Ss. 839-856 (TD)

DE WITT COUNTY

C4405 L.A. Harris, Cora Ryan #4 21-21N-3E De Witt Co. elev. 808
TD 2216 1963 core chips 2186-2216

Ordovician System

Ancell Gp.

St. Peter Ss. 2186-2216 (cored interval)

C6251 Peoples Gas, Light, and Coke Co. J. Lamb #1 Ir. 1-20N-4E De Witt Co. elev. 736
TD 4933 1964 4-inch core biscuits and chips 1000-4737 (gaps exist)

Ordovician System

Platteville Gp. 1990-2224

Ancell Gp. 2224-2494

Prairie du Chien Gp. 2494-3202

Cambrian System

Eminence Dol. 3202-3355

Potosi Dol. 3355-3617

Franconia Fm. 3617-3857

Ironton-Galesville Ss. 3857-4020

Eau Claire Fm. 4020-4535

Mt. Simon Ss. 4535-4933 (TD)

DOUGLAS COUNTY

C3906 Union Hill Gas Storage Co. H. L. Hendershot #1 8-15N-14W Douglas Co. elev. 657
TD 2510 1960 core chips 2295-2352

Ordovician System

Ancell Gp.

Joachim Dol. 2295-2456

C3907 Union Hill Gas Storage Co. A. H. Basch #1 30-16N-11E Douglas Co. elev. 642
TD 2709 1960 core 2601-2633

Ordovician System

Ancell Gp.

Joachim Dol. 2601-2633 (cored interval)

C4218 Illinois Power Co. Frank DeBolt #1* Ir. 4-16N-8E Douglas Co. elev. 677
TD 1632 1961 4-inch core 1341-1421, 1485-1631; and 4-inch core condensed to 10%,
1096-1224, 1278-1476

Ordovician System

Platteville Gp. 1054-1342

Ancell Gp. 1342-1624

Prairie du Chien Gp. 1624-1632 (TD)

*interfiled with C4829, Douglas Co., and C4830, Champaign Co.

C4829 Illinois Power Co. B. Bristow #1* 4-16N-8E Douglas Co. elev. 686 TD 3670 1964
4-inch core 977-1052, 1433-1492; and 4-inch core condensed to 10%, 1425-1537

Ordovician System

Galena Gp. 977-1052 (cored interval)

Ancell Gp. 1362-1654

*interfiled with C4218, Douglas Co., and C4830, Champaign Co.

C4884 Cabot Corp. Cabot #1 31-16N-8E Douglas Co. elev. 698 TD 5317 1966
core chips and core 3941-4121

Ordovician System

Ancell Gp.

Joachim Dol. 3810-3948

St. Peter Ss. 3948-4108

Prairie du Chien Gp.

Shakopee Dol. 4108-4121 (cored interval)

EDGAR COUNTY

C3905 Union Hill Gas Storage Co. H. L. Powers #1 27-15N-14W Edgar Co. elev. 665
TD 2520 1960 core chips 1760-1860, 2190-2311, 2392-2484

Ordovician System

Galena Gp. 1764-2190

Platteville Gp. 2190-2260

Ancell Gp. 2260-2470

Prairie du Chien Gp. 2470-2485 (cored interval)

FAYETTE COUNTY

C970 Carter Oil Co. Jennie Brauer #6D 21-8N-3E Fayette Co. elev. 528 TD 4679
1941 core chips 3842-3860, 3875-3890, 3928-3943, 4472-4486

Ordovician System

Galena and Platteville Gps. and Joachim Dol. 3824-4421

Ancell Gp.

St. Peter Ss. 4421-4618

FORD COUNTY

C1196 Herndon Drilling Co. W. J. Fecht #1 33-26N-9E Ford Co. elev. 741 TD 2237 1943
core chips 1447-1462

Ordovician System

Galena Gp. 1035-1220

Platteville Gp. 1220-1450

Ancell Group

St. Peter Ss. 1450-1690

GRUNDY COUNTY

C9852 McCarthy Engineering Hydrocarbon Transmission Corp. M-69-2 20-34N-8E Grundy Co.
elev. 527 TD 1852 1970 core chips 969-1042, 1772-1852

Cambrian System

Potosi Dol. 958-1118

Franconia Fm. 1118-1232

Ironton-Galesville Ss. 1232-1447

Eau Claire Fm. 1447-1852 (TD)

HAMILTON COUNTY

C4785 Texaco, Inc. E. Cuppy #1 6-6S-7E Hamilton Co. elev. 393 TD 13,051 1965
core chips 7610-7631 and 4-inch core 9668-9696

Ordovician System

Ancell Gp.

St. Peter Ss. 7606-7758

Everton Fm. 7758-8060

Prairie du Chien Gp.

Shakopee Dol. 8060-10252

HANCOCK COUNTY

C7607 New Jersey Zinc Koefer #H-2 13-4N-9W Hancock Co. elev. 690 TD 973 1968
BX core 72-973

Ordovician System
Galena Gp. 754-930
Platteville Gp. 930-950
Ansell Gp.
St. Peter Ss. 950-973 (TD)

C7838 New Jersey Zinc R. Cochran #H-4 15-4N-8W Hancock Co. elev. 669 TD 904 1968
BX core 134-904

Ordovician System
Galena Gp. 683-857
Platteville Gp. 857-882
Ansell Gp.
St. Peter Ss. 882-904 (TD)

C7883 New Jersey Zinc Bruder #H-3 23-4N-9W Hancock Co. elev. 664 TD 991 1968
BX core 53-991

Ordovician System
Galena Gp. 763-950
Platteville Gp. 950-972
Ansell Gp.
St. Peter Ss. 972-991 (TD)

C7888 New Jersey Zinc Potter #H-1 23-5N-8W Hancock Co. elev. 618 TD 866 1968
BX core 22-866

Ordovician System
Galena Gp. 616-812
Platteville Gp. 812-830
Ansell Gp.
St. Peter Ss. 830-866 (TD)

HENRY COUNTY

C4213 R. E. Davis Co. South #1 30-16N-1E Henry Co. elev. 794 TD 3863 1961
core chips 664-1587, 1725-1769

Ordovician System
Maquoketa Gp. 659-869
Galena Gp. 869-1102
Platteville Gp. 1102-1192
Ansell Gp.
Glenwood Fm. 1192-1239
St. Peter Ss. 1239-1303

Prairie du Chien Gp.
Shakopee Dol. 1303-1510
New Richmond Ss. 1510-1557
Oneota Dol. 1557-1769 (cored interval)

IROQUOIS COUNTY

C3904 Vickery Drilling Co. J. Taden #1 11-26N-13W Iroquois Co. elev. 653 TD 3475 1960
core chips 667-1389, 2500-2685, 3115-3312

Ordovician System
Maquoketa-Ansell Gps. 667-1389 (cored interval)
Cambrian System
Franconia Fm.-Eau Claire Fm. 2500-2685 (cored interval)
Eau Claire Fm.-Mt. Simon Ss. 3115-3312 (cored interval)

IROQUOIS COUNTY *continued*

C3908 Northern Illinois Gas Co. Condit #1 24-27N-14W Iroquois Co. elev. 642 TD 585 1960
core chips 1220-1530, 2528-3537

Ordovician System

Platteville-Ancell Gps. 1220-1550 (cored interval)

Prairie du Chien Gp. 1550-1994

Cambrian System

Eminence Dol. 1994-2150

Potosi Dol. 2150-2446

Ironton-Galesville Ss. 2446-2796

Eau Claire Fm. 2796-3418

Mt. Simon Ss. 3418-3585 (TD)

JACKSON COUNTY

C58 Stanolind Oil & Gas Co. Leiner #1 20-7S-4W Jackson Co. elev. 626 TD 4144 1938
4-inch core 3220-4115

Ordovician System

Galena Gp. 3290-3425

Platteville Gp. 3425-3770

Ancell Gp. 3770-4144 (TD)

KANKAKEE COUNTY

C2725 Natural Gas Storage Co. Karcher #1 32-30N-10E Kankakee Co. elev. 668 TD 1861
1951 core chips 1510-1860

undescribed core

C2727 Carl Bayes et al. Illinois Central R.R. #1* 28-30N-10E Kankakee Co. elev. 661
TD 2022 1951 core chips 1136-2014

Cambrian System

Eminence Dol. 1136-1224 (cored interval)

Potosi Dol. 1224-1643

Ironton-Galesville Ss. 1643-1862

Eau Claire Fm. 1862-2014 (cored interval)

*see C3900

C3900 Carl Bayes et al. Illinois Central R.R. #1* 28-30N-10E Kankakee Co. elev. 661
TD 2022 1951 core biscuits 1136-2014

* see C2727

LA SALLE COUNTY

C3707 Northern Illinois Gas Co. L. Mathesius #1 32-35N-1E La Salle Co. elev. 1590 TD 340
1957 4-inch core 1303-1530

Cambrian System

Eau Claire Fm. 1000-1421

Mt. Simon Ss. 1421-1590 (TD)

C3709 Vickery Drilling Co. Charles E. Haight #1 21-36N-2E La Salle Co. elev. 715* TD 715*
1957 NX core 232-242, 260-276, 295-315

Ordovician System

Prairie du Chien Gp.

Shakopee Dol. 220-243

New Richmond Ss. 243-323

*elevation and total depth from electric log

LA SALLE COUNTY *continued*

- C3710 Vickery Drilling Co. James Van Horn #1 3-36N-2E La Salle Co. elev. 740 TD 645
1957 NX core 259-430
Ordovician System
Prairie du Chien Gp.
Shakopee Dol. 255-312
New Richmond Ss. 312-383
Oneota Dol. 383-515
- C4009 Northern Illinois Gas Co. Schmidt #1 29-35N-1E La Salle Co. elev. 688 TD 1745
1960 core chips 1190-1710
Cambrian System
Eau Claire Fm. 1190-1621 (cored interval)
Mt. Simon Ss. 1621-1745 (TD)
- C4308 Vickery Drilling Co. (Northern Ill. Gas Co.) #S-86 14-30N-2E La Salle Co. elev. 659
TD 603 1962 4-inch core 250-275, 387-469
Ordovician System
Galena Gp. 250-420 (cored interval)
Platteville Gp. 420-469 (cored interval)
- C4309 Vickery Drilling Co. (Northern Ill. Gas Co.) #S-89 11-30N-2E La Salle Co. elev. 666
TD 823 1962 4-inch core 750-799
Ordovician System
Prairie du Chien Gp. 750-799 (cored interval)
- C4413 Vickery Drilling Co. #S-117 15-30N-2E La Salle Co. elev. 670 TD 622 1963
4-inch core 46-258
Ordovician System
Galena-Platteville Gps. 249-258 (cored interval)
- C4415 Vickery Drilling Co. #S-116 10-30N-2E La Salle Co. elev. 664 ETM TD 583 1963
4-inch core 38-263
Ordovician System
Galena-Platteville Gps. 247-263 (cored interval)
- C4416 Vickery Drilling Co. #S-113 14-30N-2E La Salle Co. elev. 661 TD 412 1963
4-inch core 40-197
Ordovician System
Galena-Platteville Gps. 186-197 (cored interval)
- C12516 Weldron Silica Prairie State Quarry #76-2 2-34N-1E La Salle Co. elev. 664 ETM
TD 86 1976 NX core 66-86
Ordovician System
Ansell Gp.
St. Peter Ss. 66-86 (cored interval)
- C12517 Weldron Silica Prairie State Quarry #76-3 2-34N-1E La Salle Co. elev. 662 ETM
TD 89 1976 NX core 31-89
Ordovician System
Ansell Gp.
St. Peter Ss. 31-89 (cored interval)

LA SALLE COUNTY *continued*

- C12518 Weldron Silica Prairie State Quarry #76-4 2-34N-1E La Salle Co. elev. 662 ETM
TD 138 1976 NX core 28-138
Ordovician System
Ansell Gp.
St. Peter Ss. 28-138 (cored interval)
- C12519 Weldron Silica Prairie State Quarry #76-5 2-34N-1E La Salle Co. elev. 662 ETM
TD 98 1976 NX core 28-98
Ordovician System
Ansell Gp.
St. Peter Ss. 28-98 (cored interval)
- C12520 Weldron Silica Prairie State Quarry #76-6 2-34N-1E La Salle Co. elev. 664 ETM
TD 150 1976 NX core 30-150
Ordovician System
Ansell Gp.
St. Peter Ss. 30-150 (cored interval)
- C12521 Weldron Silica Prairie State Quarry #76-7 2-34N-1E La Salle Co. elev. 650 ETM
TD 102 1976 NX core 11-102
Ordovician System
Ansell Gp.
St. Peter Ss. 11-102 (cored interval)
- C12522 Weldron Silica Prairie State Quarry #76-8 2-34N-1E La Salle Co. elev. 620 ETM
TD 86 1976 NX core 22-86
Ordovician System
Ansell Gp.
St. Peter Ss. 22-86 (cored interval)
- C12523 Weldron Silica Prairie State Quarry #76-9 3-34N-1E La Salle Co. elev. 640 ETM
TD 108 1976 NX core 25-108
Ordovician System
Ansell Gp.
St. Peter Ss. 25-108 (cored interval)
- C13219 Material Service Corp. #74-U-1 17-33N-2E La Salle Co. elev. 472 ETM TD 126 1974
core chips 2-126
Ordovician System
Prairie du Chien Gp.
Shakopee Dol.-New Richmond Ss. 2-126 (cored interval)
- C13220 Material Service Corp. #74-U-2 17-33N-2E La Salle Co. elev. 457 ETM TD 100 1974
NX core 80-100
Ordovician System
Prairie du Chien Gp.
New Richmond Ss. 80-100 (cored interval)
- C13221 Material Service Corp. #74-U-4 18-33N-2E La Salle Co. elev. 460 ETM TD 80.7 1974
core chips 10-80.7
Ordovician System
Prairie du Chien Gp.
Shakopee Dol.-New Richmond Ss. 10-80.7 (cored interval)

LA SALLE COUNTY *continued*

C13222 Material Service Corp. #74-U-6 18-33N-2E La Salle Co. elev. 455 ETM TD 92 1974
core chips 70-92

Ordovician System
Prairie du Chien Gp.
Shakopee Dol.-New Richmond Ss. 70-92 (cored interval)

C13223 Material Service Corp. #74-U-7 18-33N-2E La Salle Co. elev. 452 ETM TD 110 1974
NX core 100-110

Ordovician System
Prairie du Chien Gp.
New Richmond Ss. 100-110 (cored interval)

LIVINGSTON COUNTY

C2484 Peoples Gas Co. Diamond Drill Hole #1 1-26N-7E Livingston Co. elev. 720 TD 1400
1950 core biscuits and chips 158-1400

Ordovician System
Maquoketa Gp. 836-1020
Galena Gp. 1020-1195
Platteville Gp. 1195-1400 (TD)

C2485 Peoples Gas Co. Diamond Drill Hole #2C* 1-26N-7E Livingston Co. elev. 747
TD 1435 1950 core biscuits 1-1434

Ordovician System
Galena Gp. 1032-1209
Platteville Gp. 1209-1425
Ansell Gp. 1425-1435 (TD)

*see C4493

C4307 Vickery Drilling Co. (Northern Ill. Gas Co.) #S-104 31-30N-3E Livingston Co. elev. 645
TD 276 1962 4-inch core 37-276

Ordovician System
Galena Gp. 234-242
Platteville Gp. 242-276 (TD)

C4310 Vickery Drilling Co. (Northern Ill. Gas Co.) #S-40 34-30N-3E Livingston Co. elev. 631
TD 599 1961 4-inch core 231-253, 356-408, 480-501, 570-591

Ordovician System
Galena Gp. 231-253 (cored interval)
Platteville Gp. 353-408 (cored interval)
Ansell Gp.
St. Peter Ss. 480-501 (cored interval)
Prairie du Chien Gp. 570-599 (TD)

C4311 Vickery Drilling Co. (Northern Ill. Gas Co.) #S-21 29-30N-3E Livingston Co. elev. 642
TD 594 1961 4-inch core 495-516

Ordovician System
Prairie du Chien Gp. 495-516 (cored interval)

C4312 Vickery Drilling Co. (Northern Ill. Gas Co.) #S-42 3-29N-3E Livingston Co. elev. 632
TD 225 1962 4-inch core 31-225

Ordovician System
Platteville Gp. 176-225 (cored interval)

LIVINGSTON COUNTY *continued*

- C4313 Northern Illinois Gas Co. Clark #1 33-30N-3E Livingston Co. elev. 635 TD 425 1962
4-inch core 32-230, 352-377
Ordovician System
Ansell Gp. 352-377 (cored interval)
- C4389 Northern Illinois Gas Co. Fordyce #5 33-30N-3E Livingston Co. elev. 643 TD 2729
1962 core chips 2350-2635
Cambrian System
Mt. Simon Ss. 2350-2635 (cored interval)
- C4390 Northern Illinois Gas Co. Fordyce #1 33-30N-3E Livingston Co. elev. 640 TD 2585
1962 core chips 192-202, 1560-2361
Ordovician System
Platteville Gp. 192-402
Ansell Gp. 402-520
Prairie du Chien Gp. 520-1107
Cambrian System
Eminence Dol.-Franconia Fm. 1107-1546
Ironton-Galesville Ss. 1546-1749
Eau Claire Fm. 1749-2156
Mt. Simon Ss. 2156-2585 (TD)
- C4493 Peoples Gas Diamond Drill Hole #2C* 1-26N-7E Livingston Co. elev. 747 TD 1435
1950 select core biscuits 10-1435
*see C2485
- C4636 Northern Illinois Gas Co. Fienhold #1 33-28N-6E Livingston Co. elev. 730 TD 3485
1965 core chips 545-1243, 2342-3294
Ordovician System
Maquoketa Gp. 489-666
Galena Gp. 666-826
Platteville Gp. 826-1063
Ansell Gp. 1063-1307
Prairie du Chien Gp. 1307-1775
Cambrian System
Eminence Dol. 1775-1911
Potosi Dol. 1911-2150
Franconia Fm. 2150-2342
Ironton Ss. 2342-2478
Galesville Ss. 2478-2555
Eau Claire Fm. 2555-3012
Mt. Simon Ss. 3012-3485 (TD)

LOGAN COUNTY

- C9238 Central Illinois Light Co. Rocky Ford #1 8-19N-3W Logan Co. elev. 579 TD 2057
1971 core chips 2003-2057
Ordovician System
Galena Gp. 1748-1886
Platteville Gp. 1886-2057(TD)
Mifflin and Pecatonica Fms. 2003-2057 (cored interval)
- C9239 Central Illinois Light Co. Hauffe #1 31-20N-3W Logan Co. elev. 597 TD 2302 1971
core chips 2175-2225
Ordovician System
Ansell Gp.
Joachim Dol. 2158-2217
St. Peter Ss. 2217-2302 (TD)

MACON COUNTY

C2759 Sun Oil Corp. Joseph F. Damery #1 5-15N-1E Macon Co. elev. 612 TD 3779 1953
core chips 3036-3086, 3124-3130, 3140-3208, 3750-3779

Ordovician System

Ancell Gp.

St. Peter Ss. 3036-3086 (cored interval)

Prairie du Chien Gp.

Shakopee Dol. 3116-3690 (cored interval)

Oneota Dol. 3690-3779 (TD)

MARION COUNTY

C4831 Texaco Inc. R. S. Johnson #1 6-1N-2E Marion Co. elev. 541 TD 9210 1966
core chips and complete core 5237-5252, 8462-8469

Ordovician System

Ancell Gp.

St. Peter Ss. 5233-5376 (cored interval)

Cambrian System

Mt. Simon Ss. 8450-9170 (cored interval)

MADISON COUNTY

C3749 Maryland Services Co. Stewart Klein #S-2* 33-3N-6W Madison Co. elev. 510
TD 5213 1959 core chips 2945-2971

Ordovician System

Ancell Gp.

Joachim Dol. 2945-2971 (cored interval)

*see C8948

C3750 Maryland Services Co. E.F. Kercheis #1-S 27-3N-6W Madison Co. elev. 505
TD 5117.5 1959 core chips 2427-2901, 5014-5017.5

Ordovician System

Platteville Gp. 2404-2666

Ancell Gp.

Joachim Dol. 2666-2849

St. Peter Ss. 2849-2906

Precambrian 5014-5017.5 (TD)

C8948 Mississippi River Transmission Co. Stewart Klein #S-2* 33-3N-6W Madison Co.
elev. 510 TD 5213 1959 2.5-inch core 4575-5213

Cambrian System

Potosi Dol. 4575-4605 (cored interval)

Franconia Fm. 4605-4698

Eau Claire Fm. 4698-5144

Mt. Simon Ss. 5144-5202

Precambrian 5202-5213 (TD)

*see C3749

C8949 Mississippi River Transmission Co. Huldah Baer #S-5 27-3N-6W Madison Co. elev. 525
TD 4866 1959 2.5-inch core 4740-4866

Cambrian System

Eau Claire Fm. 4558-4857

Precambrian 4857-4866 (TD)

McLEAN COUNTY

C10179 Northern Illinois Gas Grimes #1 1-24N-2E McLean Co. elev. 799 TD 4234 1968
4-inch core 550-720, 1240-1836, 3603-4038

Ordovician System

Maquoketa Gp. 1104-1180
Galena Gp. 1180-1292
Platteville Gp. 1292-1664
Ansell Gp.
Glenwood Fm. 1664-1680
St. Peter Ss. 1680-1877
Prairie du Chien Gp. 1877-2563

Cambrian System

Eminence Dol., Potosi Dol., and
Franconia Fms. 2563-3152
Ironton-Galesville Ss. 3152-3623
Eau Claire Fm.-Mt. Simon Ss. 3623-4234 (TD)

C10180 Northern Illinois Gas Co. Pyne #1 Ir. 14-25N-3E McLean Co. elev. 746 TD 4002
1968 core chips 1173-3848

Ordovician System

Maquoketa Gp. 1006-1183
Galena Gp. 1183-1358
Platteville Gp. 1358-1554
Ansell Gp. 1554-1787
Prairie du Chien Gp. 1787-2443

Cambrian System

Eminence Dol.-Potosi Dol. 2443-2801
Franconia Fm. 2801-3027
Ironton-Galesville Ss. 3027-3240
Eau Claire Fm. 3240-3702
Mt. Simon Ss. 3702-4002 (TD)

C10181 Northern Illinois Gas Co. Houck #1 19-26N-3E McLean Co. elev. 764 TD 3988
1967 core chips 1191-3779

Ordovician System

Maquoketa Gp. 1028-1212
Galena Gp. 1212-1374
Platteville Gp. 1374-1578
Ansell Gp. 1578-1953
(Kress Mbr. 1938-1953)
Prairie du Chien Gp.
Shakopee Dol. 1953-2168
New Richmond Ss. 2168-2260
Oneota Dol. 2260-2404
Gunter Ss. 2404-2424

Cambrian System

Eminence Dol. 2424-2550
Potosi Dol. 2550-2790
Franconia Fm. 2790-3000
Ironton-Galesville Ss. 3000-3220
Eau Claire Fm. 3220-3656
Mt. Simon Ss. 3656-3988 (TD)

MERCER COUNTY

C3534 Harold Kelley Fullerton #1 19-13N-4W Mercer Co. elev. 584 TD 3706 1957
core chips 3235-3250, 3681-3706

Cambrian System

Mt. Simon Ss. 2500-3252
Precambrian 3252-3706 (TD)

MONROE COUNTY

C2498 Mississippi River Fuel Corp. Theobald #A-1 35-1S-10W Monroe Co. elev. 630
TD 853 1951 core chips 800-853

Ordovician System

Ansell Gp. 800-853 (cored interval)

MONROE COUNTY *continued*

- C2512 Mississippi River Fuel Corp. Kolmer #A-3 2-2S-10W Monroe Co. elev. 650 TD 1571
1951 core chips 850-1050
Ordovician System
Ansell Gp.
Joachim Dol. 790-883
Glenwood Fm. 883-898
St. Peter Ss. 898-958
Everton Dol. 958-1050 (cored interval)
- C2523 Mississippi River Fuel Corp. A. F. Kolmer #A-4 2-2S-10W Monroe Co. elev. 691
TD 1670 1951 core chips 1430-1589, 1660-1666.5
Ordovician System
Prairie du Chien Gp.
Roubidoux Dol. 1430-1483 (cored interval)
Gasconade Dol. 1483-1666 (cored interval)
- C2525 Mississippi River Fuel Corp. Abraham Theobald #A-5 35-1S-10W Monroe Co. elev. 687
TD 1670 1951 core chips 1485-1582
Ordovician System
Prairie du Chien Gp.
Gasconade Dol. 1485-1582 (cored interval)
- C2800 Mississippi River Fuel Corp. Abraham Theobald #A-15 35-1S-10W Monroe Co.
elev. 666 TD 2766.5 1952 core chips 770-2761 (some gaps exist)
Ordovician System
Ansell Gp.
Joachim Dol.-St. Peter Ss.
781-953
Everton Dol. 953-1079
Prairie du Chien Gp.
Powell Dol. 1079-1036
Cotter Dol. 1036-1298
Jefferson City Dol. 1298-1358
Roubidoux Dol. 1358-1446
Gasconade Dol. 1446-1545
Van Buren Dol. 1545-1807
Cambrian System
Eminence Dol. 1807-1930
Potosi Dol. 1930-2403
Franconia Fm. 2403-2476
Eau Claire Fm. 2476-2759
Precambrian 2759-2766.5 (TD)

MONTGOMERY COUNTY

- C13268 Illinois Power Co. Morrell-Lipe #1 5-9N-3W Montgomery Co. elev. 643 TD 3090.5
1968 1/4 cut of 4-inch core 3061.5-3090.5
Ordovician System
Ansell Gp.
Joachim Dol. 2996-3068
St. Peter Ss. 3068-3090.5 (TD)

OGLE COUNTY

- C4569 Natural Gas Pipeline Co. R. Keckler #2 35-24N-7E Ogle Co. elev. 805 TD 2131
1963 core chips 610-1282
Cambrian System
Franconia Fm. 608-690
Ironton-Galesville Ss. 690-835
Eau Claire Fm. 835-1147
Mt. Simon Ss. 1147-2131 (TD)

OGLE COUNTY *continued*

C4570 Natural Gas Pipeline Corp. Oylar #2 Ir. 2-23N-7E Ogle Co. elev. 925 TD 1263
1963 core chips 580-600, 718-875, 80-1121

Cambrian System

Potosi Dol. 580-592 (cored interval)

Franconia Fm. 592-673

Ironton-Galesville Ss. 673-815

Eau Claire Fm. 815-1050

Mt. Simon Ss. 1050-1263 (TD)

PEORIA COUNTY

C2228 Algona Oil Co. Charles Cramer #1 27-8N-5E Peoria Co. elev. 629 TD 1560 1939
core chips 497-1560

Ordovician System

Galena-Platteville Gps. 1186-1480

Ancell Gp. 1480-1560 (TD)

C4100 Central Illinois Light Co. William K. Cowser #1 11-7N-6E Peoria Co. elev. 623
TD 2687 1961 4-inch core 1054-2499

Ordovician System

Maquoketa Gp. 1054-1158 (cored interval)

Cambro-Ordovician breccia 1158-2499* (cored interval)

*core from Glasford Structure

PERRY COUNTY

C4487 Texaco, Inc. John Majewski #1 23-4S-1W Perry Co. elev. 448 TD 4275 1964
core chips 4164-4214, 4245-4264

Ordovician System

Galena Gp. 4134-4214 (cored interval)

Plattville Gp. 4245-4275 (TD)

PIATT COUNTY

C3902 Union Hill Gas Storage J. Buchan #1 13-21N-6E Piatt Co. elev. 756 TD 2168
1960 core chips 1419-2072

Ordovician System

Galena-Platteville Gps. 1412-1824

Ancell Gp.

Joachim Dol. 1824-1870

St. Peter Ss. 1870-2110

Prairie du Chien Gp. 2110-2168 (TD)

PIKE COUNTY

C1416 Herndon Drilling Co. B. Campbell #1 15-4S-5W Pike Co. elev. 715 TD 3207 1944
core chip 3206

Precambrian 3205-3207 (TD)

PIKE COUNTY *continued*

C3500 Pike County Gas Assoc. Conkright #2 4-4S-4W Pike Co. elev. 856 TD 1212 1957
core chips 712-1212

Ordovician System

Galena Gp. 712-903

Plattville Gp. 903-970

Ancell Gp.

Joachim Dol. 970-1010

St. Peter Ss. 1010-1208

Prairie du Chien Gp.

Shakopee Dol. 1208-1212 (TD)

C12785 Battelle-Northwest G. Saylor #1 17-5S-4W Pike Co. elev. 804 TD 817 1982
NX core 65-817

Ordovician System

Platteville Gp. 650-704

Ancell Gp. 704-817 (TD)

C13065 D & G Drilling Mumford #3 21-5S-4W Pike Co. elev. 769 TD 705 1983
NX core 524-705

Ordovician System

Platteville Gp. 524-612

Ancell Gp. 612-705 (TD)

C13066 D & G Drilling Elmer Yakley #1 21-5S-4W Pike Co. elev. 794 TD 611 1983
NX core 9-611

Ordovician System

Platteville Gp. 500-575

Ancell Gp. 575-611 (TD)

C13068 D & G Drilling Elmer Yakley #7 21-5S-4W Pike Co. elev. 804 TD 692.3 1980
NX core 165-612

Ordovician System

Maquoketa Gp. 185-348

Galena Gp. 348-507

Platteville Gp. 507-597

Ancell Gp.

Joachim Dol. 597-603

St. Peter Ss. 603-692.3 (TD)

PUTNAM COUNTY

C4930 Jones and Laughlin Steel Co. Waste Disposal #1 3-32N-2W Putnam Co. elev. 527
TD 4877 1966 core chips 2826-2854, 3227-4868

Cambrian System

Eau Claire Fm. 2704-3135

Mt. Simon Ss. 3135-4842

Precambrian 4842-4877 (TD)

RICHLAND COUNTY

C3598 and C5778 Pure Oil Co. C.T. Montgomery #18-B 4-3N-9E Richland Co. elev. 503
TD 6800 1959 core chips 5932-6082, 6761-6800; and core plugs 6772.5-6778.5

Ordovician System

Galena Gp. 5898-6040

Platteville Gp. 6040-6502

Joachim Dol. 6502-6605

Ancell Gp.

St. Peter Ss. 6605-6800 (TD)

SANGAMON COUNTY

C28 Miller G.W. Sample #1 11-15N-3W Sangamon Co. elev. 596 TD 2732 1939
complete core 632-2732

Ordovician System

Maquoketa Gp. 2058-2262

Galena and Platteville Gps. 2262-2670

Ancell Gp.

Glenwood Fm. 2670-2675

St. Peter Ss. 2675-2732 (TD)

STARK COUNTY

C9240 Central Illinois Light Co. Witte #701 11-13N-5E Stark Co. elev. 750 TD 2822 1971
core biscuits 750-1333, 2035-2300, 2727-2757

Ordovician System

Galena Gp. 821-1049

Platteville Gp. 1049-1155

Ancell Gp. 1155-1253

Prairie du Chien Gp. 1253-1804

Cambrian System

Eminence Dol. 1804-1882

Potosi Dol. 1882-2068

Franconia Fm. 2068-2240

Ironton-Galesville Ss. 2240-2374

Eau Claire Fm. 2374-2720

Mt. Simon Ss. 2720-2822 (TD)

ST. CLAIR COUNTY

C1090 Eason Oil Co. Edna C. Thomas #1 4-1S-8W St. Clair Co. elev. 515 TD 2172 1943
core chips 2164-2172

Ordovician System

Ancell Gp.

St. Peter Ss. 2161-2172 (TD)

C3200 Sun Oil Co. (Mississippi River Fuel Corp.) M.E. Vale #1 8-2S-8W St. Clair Co.
elev. 450 TD 1961 1954 core chips 1348-1396, 1833-1961

Ordovician System

Galena Gp. 1348-1396 (cored interval)

Joachim Dol. 1833-1867 (cored interval)

St. Peter Ss. 1867-1961 (TD)

STEPHENSON COUNTY

C12996 Commonwealth Edison UPH #3 Ir. 7-28N-6E Stephenson Co. elev. 989.6 TD 5272
1979 NX core 32-2176

Ordovician System

Galena Gp. 32-264
Platteville Gp. 264-343
Ansell Gp. 343-475
Prairie du Chien Gp. 475-642

Cambrian System

Jordan Ss. 642-723
Potosi Dol. 723-768
Franconia Fm. 768-853
Ironton-Galesville Ss. 853-998
Eau Claire Fm. 998-1309
Mt. Simon Ss. 1309-2176
Precambrian 2176-5272 (TD)

TAZEWELL COUNTY

C3766 Central Illinois Light Co. Mary Wooding #1 5-23N-6W Tazewell Co. elev. 518
TD 1561 1958 core chips 1047-1067, 1419-1445

Ordovician System

Maquoketa Gp. 922-1114
Galena and Platteville Gps. 1114-1426
Ansell Gp.
St. Peter Ss. 1426-1561 (TD)

VERMILION COUNTY

C8965 Allied Chemical Corp. Allied Chemical #1 12-19N-11W Vermilion Co. elev. 662
TD 6684 1972 core chips 2787-6505

Ordovician System

Prairie du Chien Gp. 2620-3322

Cambrian System

Eminence Dol. 3332-3620
Potosi Dol. 3620-3928
Franconia Fm. 3928-4100
Ironton-Galesville Ss. 4100-4260
Eau Claire Fm. 4260-4864
Mt. Simon Ss. 4864-6684 (TD)

WARREN COUNTY

C7215 Illinois Power Co. Moberg #1 3-12N-1W Warren Co. elev. 737 TD 2640 1968
core chips 691-1175, 1874-2258, 2452-2640; and 4-inch core-biscuits 692-1174, 1874-2640

Ordovician System

Galena Gp. 691-927
Platteville Gp. 927-992
Ansell Gp. 992-1168
Prairie du Chien Gp. 1168-1620

Cambrian System

Eminence Dol. 1620-1696
Potosi Dol. 1696-1856
Franconia Fm. 1856-2086
Ironton-Galesville Ss. 2086-2181
Eau Claire Fm. 2227-2517
Mt. Simon Ss. 2517-2640 (TD)

C7466 Illinois Power Co. Anderson #1 7-12N-1W Warren Co. elev. 701 TD 2639 1969
4-inch core and chips 2081-2137, 2146-2190, 2464-2639

Cambrian System

Franconia Fm. 2081-2125
Ironton-Galesville Ss. 2125-2190
no core 2190-2464
Eau Claire Fm. 2464-2577
Mt. Simon Ss. 2577-2639 (TD)

WARREN COUNTY *continued*

C7889 New Jersey Zinc Hepelle #J-11 3-8N-1W Warren Co. elev. 687 TD 1075 1968
BX core 86-1075

Ordovician System
Galena-Platteville Gp. 762-1057
Ansell Gp.
St. Peter Ss. 1057-1075 (TD)

WASHINGTON COUNTY

C2239 W. C. McBride, Inc. A. V. Hunleth #1 29-3S-4W Washington Co. elev. 542
TD 3984 1948 core chips 3938-3948

Ordovician System
Ansell Gp.
Joachim Dol. 3812-3942
St. Peter Ss. 3942-3984 (TD)

WHITE COUNTY

C2740 Superior Oil H. C. Ford et al. #C-17 27-4S-14W White Co. elev. 384 TD 7683.5
1952 6-inch core, condensed 1/2, 3050-7650

Ordovician System
Maquoketa Gp. 6090-6419
Galena Gp. 6419-6533
Platteville Gp. 6533-7055
Ansell Gp. 7055-7509
Everton Dol. 7509-7683.5 (TD)

WILL COUNTY

C1229 Layne-Western (S. B. Geiger) Kankakee Ordinance Works #1 12-33N-9E Will Co.
elev. 580 ETM TD 1642 1942 core chips 750-751.5, 1560-1570

Ordovician System
Ansell Gp.
Glenwood Fm.-St. Peter Ss. 612-860 (cored interval)
Cambrian System
Mt. Simon Ss. 1560-1570 (cored interval)

C2824 Sullivan Machinery Braidwood City Well #9 8-32N-9E Will Co. elev. 570 TD 900
1889 NX core chips 265-900

Ordovician System
Platteville Gp. 460-645
Ansell Gp.
Glenwood Fm. 645-750
St. Peter Ss. 750-900 (TD)

C6211 McCarthy Engineering Co. Northern Gas Products Co. composite core of four wells from
W 1/2 of NE 1/4 36-37N-10E (center of four wells) Will Co. elev. approx. 700 ETM
TD 791 NX core biscuits 141-791 (condensed to 15%)

Silurian System 141-255
Ordovician System 255-791 (TD)

WILL COUNTY *continued*

C12955 COMINCO #JL-1 (McCoy) 20-35N-9E Will Co. elev. 632 TD 4300 1963
BX core 74-586

undescrbed core; continuous core from Silurian System to Glenwood Fm. at TD

C12956 COMINCO #JL-2 (Bieth) 18-35N-9E Will Co. elev. 646 ETM TD 596 1963
BX core 86-596

undescrbed core; continuous core from Silurian System to Glenwood Fm. at TD