

STACK-UNIT MAP (to 50 ft.) OF KANE COUNTY

B. BRANDON CURRY

Computer cartography:
ANNE L. ERDMANN



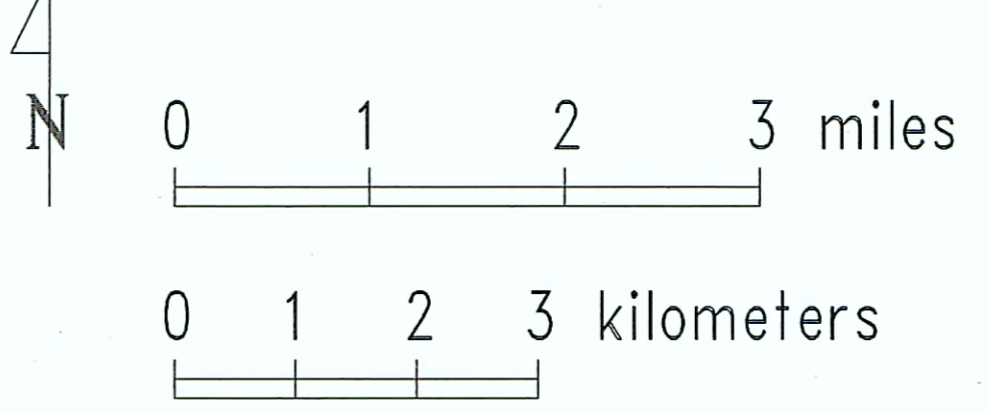
This map requires a detailed legend supplied as an attachment describing stack-unit sequences corresponding to alphanumeric codes depicted on the map. Stack-units are grouped by dominant surficial lithostratigraphic units.

STACK UNITS

| | | | | |
|------|---|-------|---|----------------|
| c-0 | Cahokia Alluvium | wy-1 | Wedron Formation | |
| c-1 | | wy-2 | Yorkville Till Member, silty clay diamicton | |
| gr-0 | Grayslake Peat | wy-3 | | |
| e-1 | Equality Formation, lacustrine sediment | wml-1 | Malden Till Member | |
| e-2 | | wml-2 | wml-4 | loam diamicton |
| e-3 | | wml-3 | wml-5 | |
| h-0 | Henry Formation, outwash | wmc-1 | Malden Till Member | |
| h-1 | | wmc-2 | clay diamicton | |
| h-2 | | tml-1 | Tiskilwa Till Member, clay loam diamicton | |
| h-3 | | tml-2 | | |

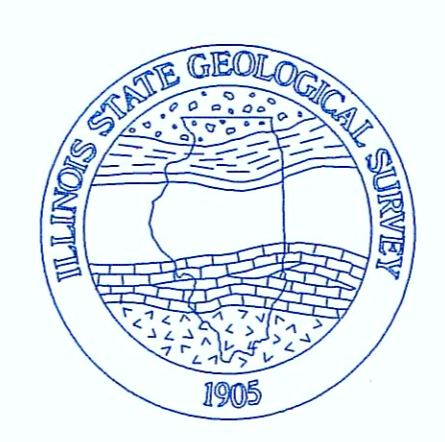
- Bedrock within 50 feet of ground surface
- Bedrock within 20 feet of ground surface
- 1 ● Type borings or outcrops (see attachment for description)

- | | |
|--------------------------|--------------------------|
| CULTURAL FEATURES | PITS AND QUARRIES |
| Roads | small pits and quarries |
| Municipal boundaries | pits and quarries |
| Township boundaries | |

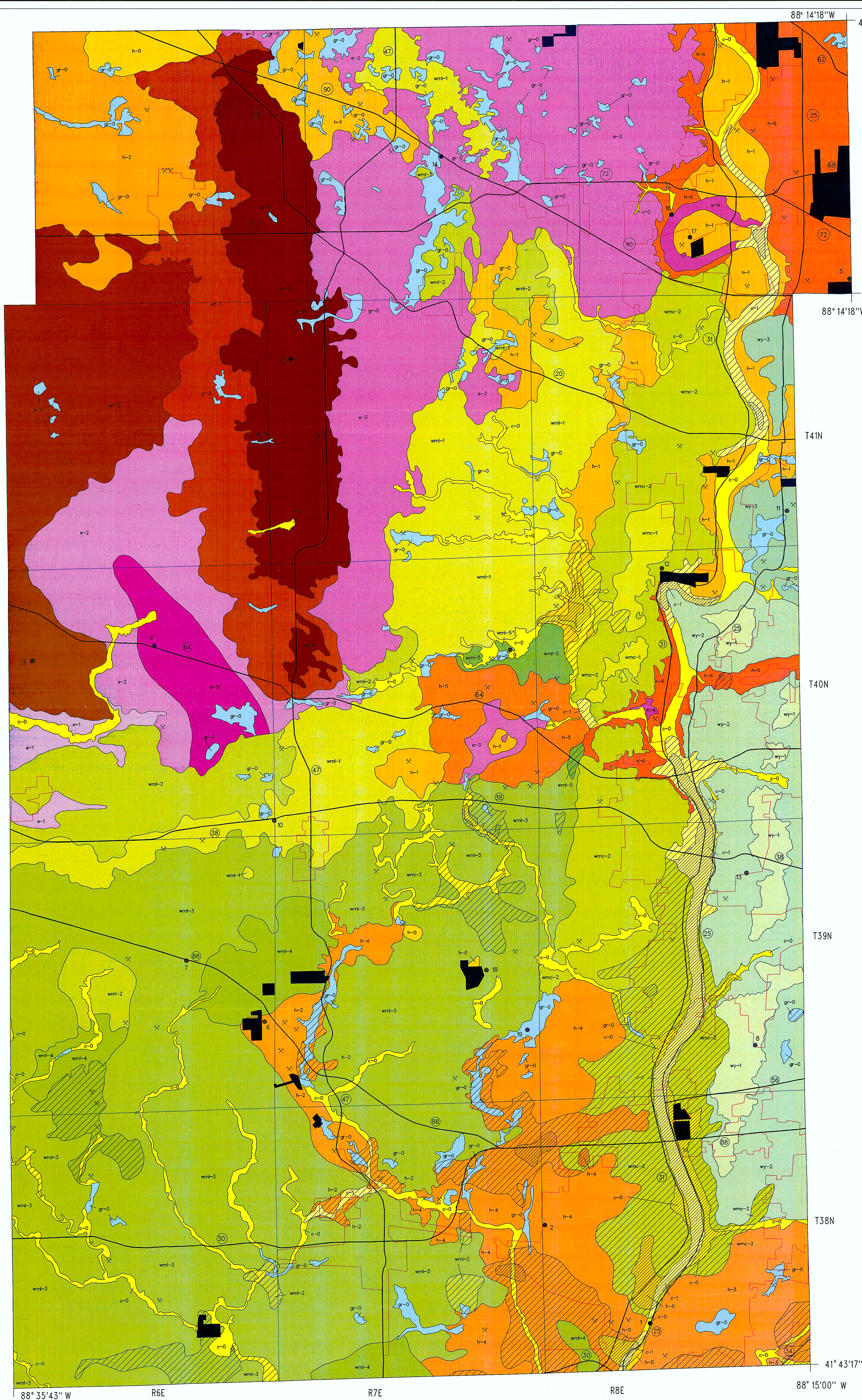


Scale 1:62,500

Lambert conformal conic projection based on standard parallels 33 and 45.



This map was generated from cross sections based on boreholes and other information on file at the Illinois State Geological Survey as of June 1989. Locations of some features may be offset by 500 feet or more due to errors in the drill log information, the cross sections generation process, digitizing, or a combination of these factors. The Illinois State Geological Survey does not guarantee the validity or accuracy of these data.



88° 35' 43" W R6E R7E R8E 88° 15' 00" W 41° 43' 17" N