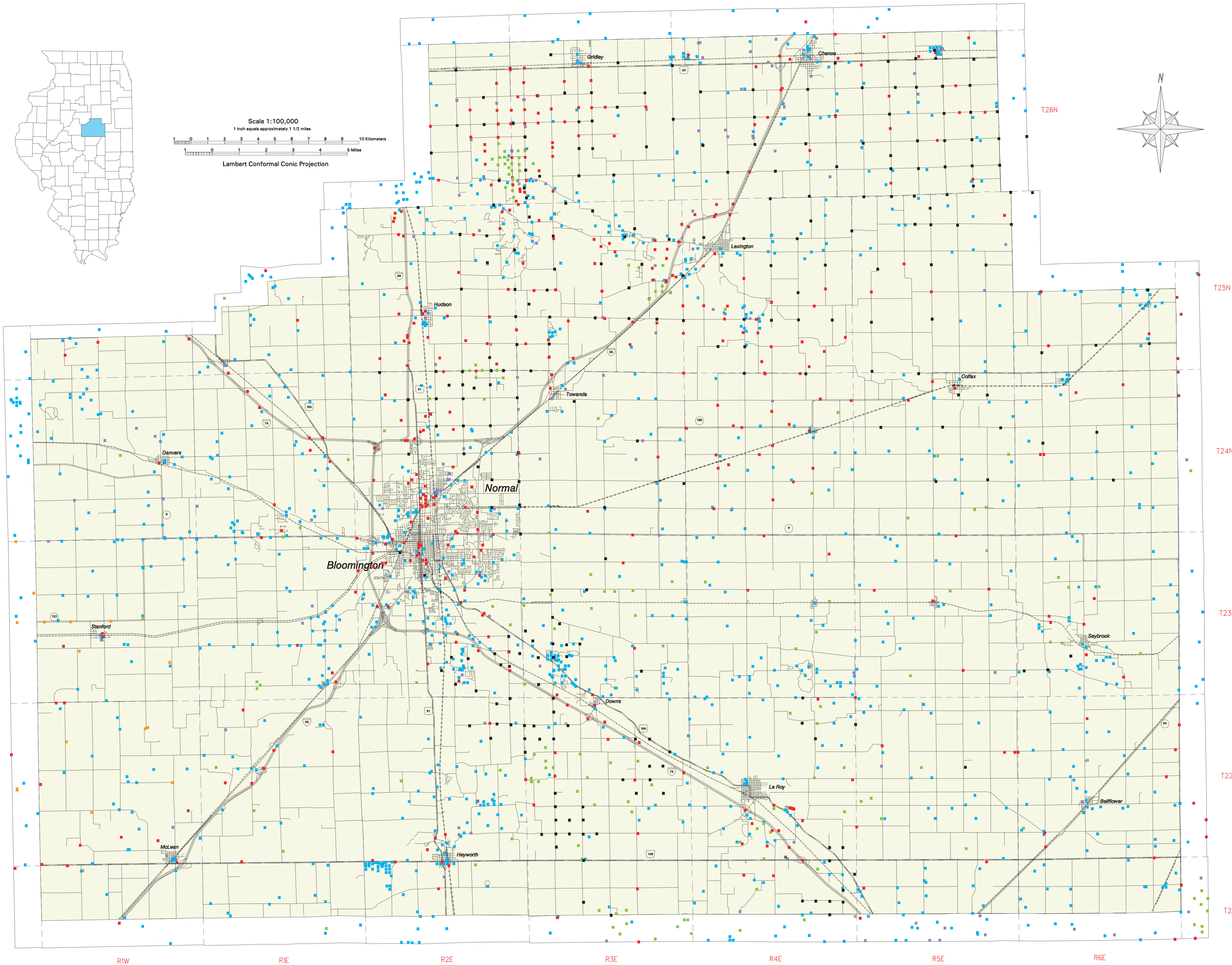
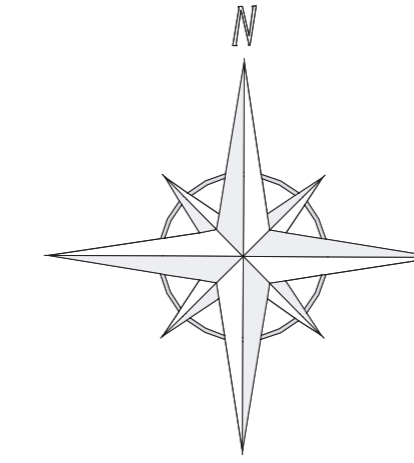
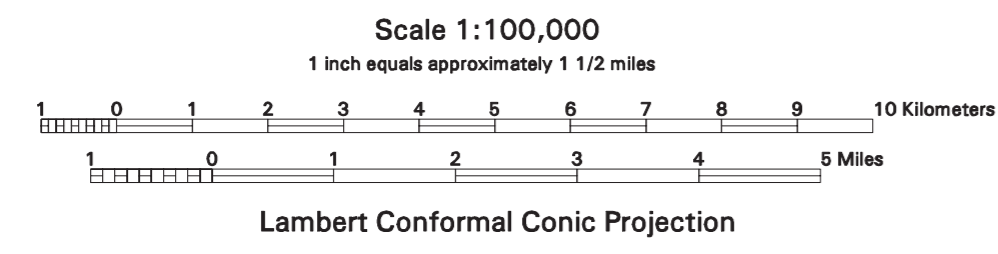
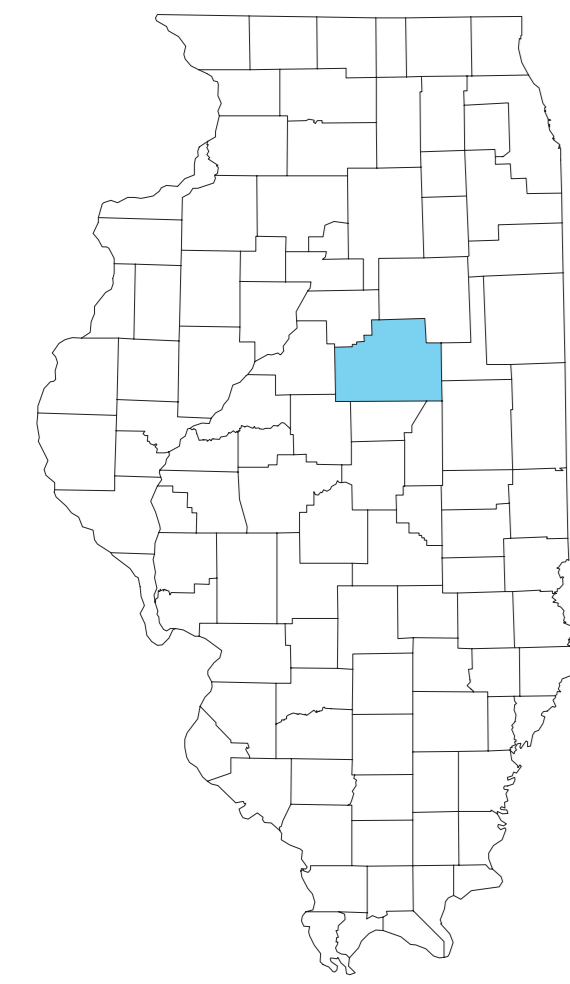
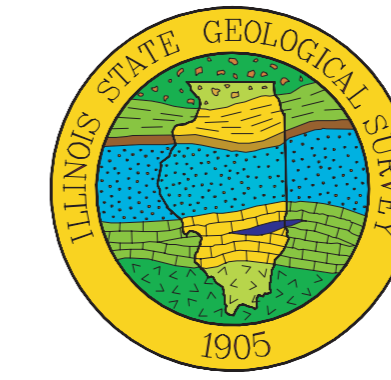


Locations of Data Points in McLean County, Illinois

compiled by Melisa M. McLean and Matthew H. Riggs

1997



- | | |
|------------------------------|----------------------|
| ■ Water Well | — Township Line |
| ■ Engineering Boring | — Interstate Highway |
| ■ Coal Test | — US Highway |
| ■ Gas or Oil Boring | — State Highway |
| ■ Other or Unknown Well Type | — Other Roads |
| ■ ISGS/ISWS Test Holes | — Railroad |
| ■ ISGS/USGS Test Holes | — Abandoned Railway |
| | — Hiking/Biking Path |

Explanation

This map shows the locations of 2,534 data points within McLean County (shaded area) and a one-mile buffer around the county. This information is on file at the Illinois State Geological Survey (ISGS). A one-mile buffer was included to avoid any edge effects when using the data to create derivative maps (McLean, et al., 1997a-b). The data were collected from records at the ISGS, McLean County Highway Department, and the City of Normal Public Works Department as well as from Dr. Robert S. Nelson, Illinois State University. Additional data were provided from an ISGS and Illinois State Water Survey (ISWS) groundwater resource assessment project in western McLean and eastern Tazewell Counties (Herzog, et al., 1995) and an ISGS and U.S. Geological Survey (USGS) mapping project of the Champaign 1:100,000 Quadrangle.

The data points include 1,411 water wells, 463 engineering borings, 295 coal test borings, 188 oil and gas borings, 150 other or unknown well types, 19 ISGS/ISWS test holes and geophysical test sites and 8 ISGS/USGS test holes. Locations of most data points were used as shown on the well records and were not field verified. However, 142 water well locations were verified by plat book, and the 15 ISGS/ISWS and 8 ISGS/USGS test hole locations were field verified.

Public Land Survey boundaries were digitized from USGS 7.5-minute topographic maps. The slight skewness in the orientation of the map is due to the map projection (Lambert conformal conic). Public Land Survey Lines in this part of the state do not run true north-south or east-west. Roads and railroads were obtained from USGS (1985) 1:100,000 digital line graph data.

This map is one of a series produced by the Illinois State Geological Survey (ISGS) as part of a geologic mapping program in McLean County, Illinois, to assist the county in landfill site screening.

References Cited

Herzog, B.L., S. D. Wilson, D.R. Larson, E.C. Smith, T.H. Larson, and M.L. Greenslate, 1995. Hydrogeology and Groundwater Availability in Southwest McLean and Southeast Tazewell Counties, Part 1: Aquifer Characterization. Illinois State Water Survey and Illinois State Geological Survey Cooperative Ground-Water Report 17, 70 p.

McLean, Melisa M., Maureen D. Kelly and Matthew H. Riggs, 1997a. Topography of the Bedrock Surface in McLean County, Illinois. Illinois State Geological Survey Open File Series 1997-1d, Scale 1:100,000.

McLean, Melisa M., Maureen D. Kelly, and Matthew H. Riggs, 1997b. Thickness of Quaternary Deposits in McLean County, Illinois. Illinois State Geological Survey Open File Series 1997-1e, Scale 1:100,000.

Acknowledgments

Contributions to the development of this map were made by Sally L. Denhart, Joan K. Junkins. Additional data were supplied by John P. Kempton, Edward C. Smith and C. Plus Weibel. E. Donald McKay was the principal investigator for this project. This project was funded in part by the Illinois Department of Commerce and Community Affairs, Bureau of Energy and Recycling, Springfield, Illinois.