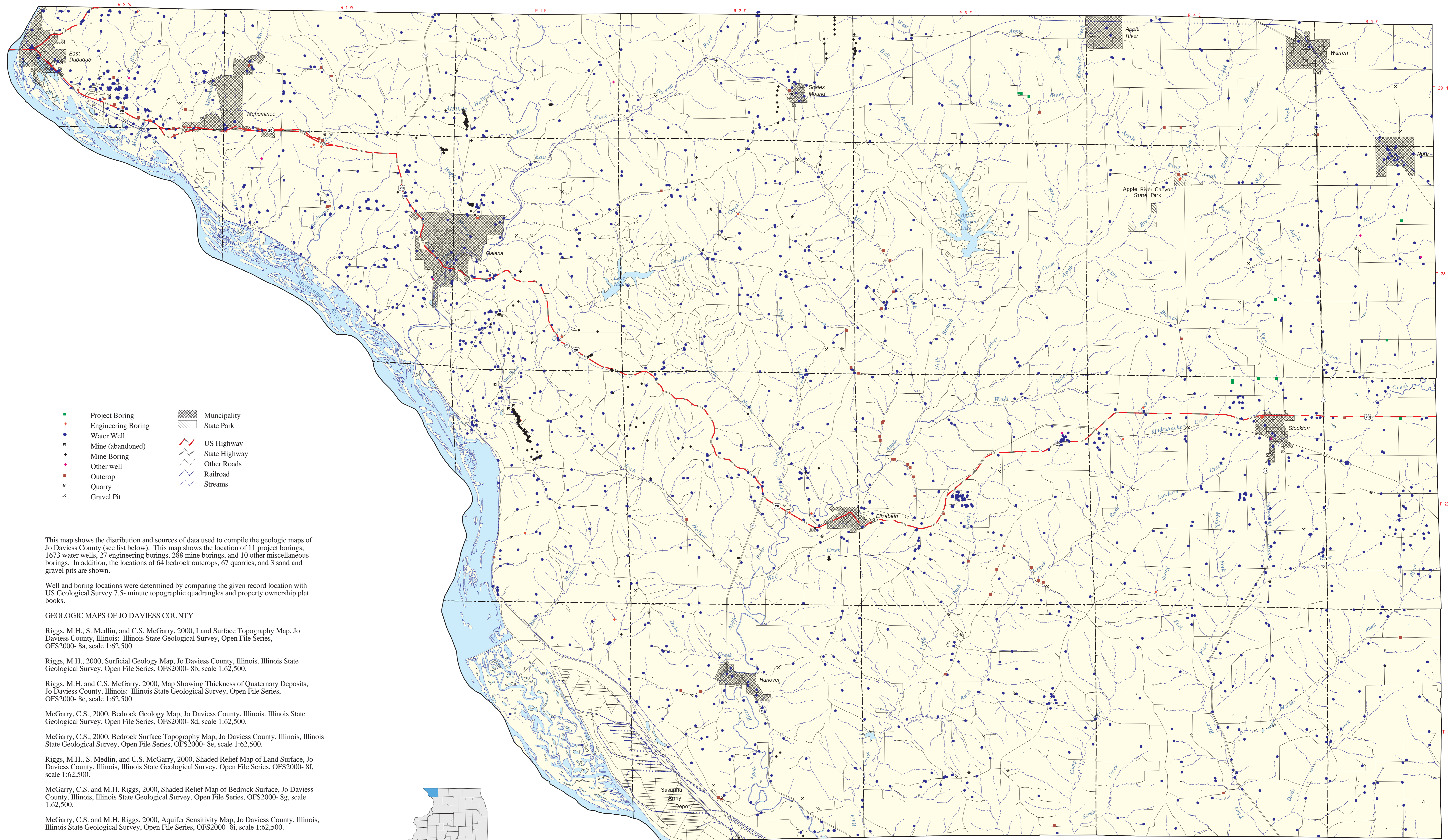


MAP SHOWING LOCATION OF DATA POINTS, JO DAVIESS COUNTY, ILLINOIS

Matthew H. Riggs and Christopher S. McGarry



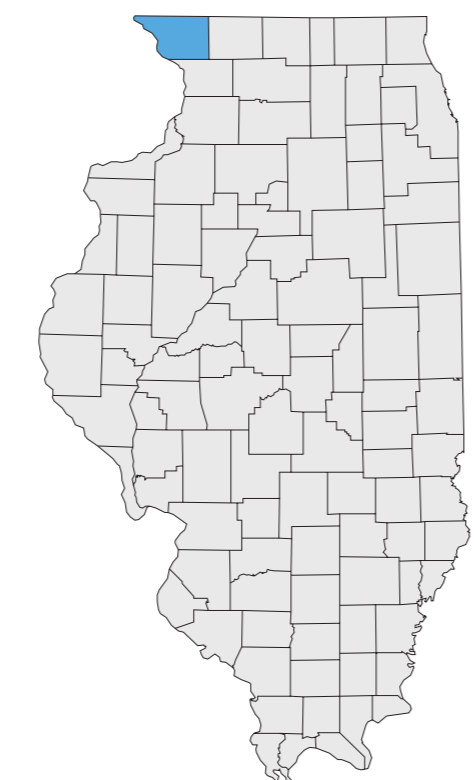
- | | | | |
|---|--------------------|---|---------------|
| ■ | Project Boring | ▨ | Municipality |
| ● | Engineering Boring | ▨ | State Park |
| ● | Water Well | — | US Highway |
| ● | Mine (abandoned) | — | State Highway |
| ● | Mine Boring | — | Other Roads |
| ● | Other well | — | Railroad |
| ■ | Outcrop | — | Streams |
| × | Quarry | | |
| ○ | Gravel Pit | | |

This map shows the distribution and sources of data used to compile the geologic maps of Jo Daviess County (see list below). This map shows the location of 11 project borings, 1673 water wells, 27 engineering borings, 288 mine borings, and 10 other miscellaneous borings. In addition, the locations of 64 bedrock outcrops, 67 quarries, and 3 sand and gravel pits are shown.

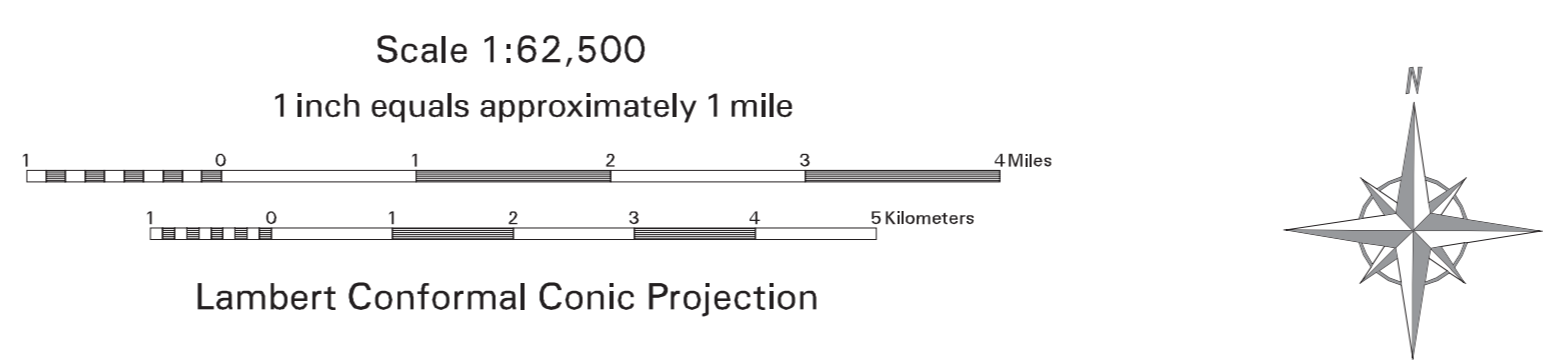
Well and boring locations were determined by comparing the given record location with US Geological Survey 7.5-minute topographic quadrangles and property ownership plat books.

GEOLOGIC MAPS OF JO DAVIESS COUNTY

- Riggs, M.H., S. Medlin, and C.S. McGarry, 2000, Land Surface Topography Map, Jo Daviess County, Illinois: Illinois State Geological Survey, Open File Series, OFS2000-8a, scale 1:62,500.
- Riggs, M.H., 2000, Surficial Geology Map, Jo Daviess County, Illinois: Illinois State Geological Survey, Open File Series, OFS2000-8b, scale 1:62,500.
- Riggs, M.H. and C.S. McGarry, 2000, Map Showing Thickness of Quaternary Deposits, Jo Daviess County, Illinois: Illinois State Geological Survey, Open File Series, OFS2000-8c, scale 1:62,500.
- McGarry, C.S., 2000, Bedrock Geology Map, Jo Daviess County, Illinois: Illinois State Geological Survey, Open File Series, OFS2000-8d, scale 1:62,500.
- McGarry, C.S., 2000, Bedrock Surface Topography Map, Jo Daviess County, Illinois: Illinois State Geological Survey, Open File Series, OFS2000-8e, scale 1:62,500.
- Riggs, M.H., S. Medlin, and C.S. McGarry, 2000, Shaded Relief Map of Land Surface, Jo Daviess County, Illinois: Illinois State Geological Survey, Open File Series, OFS2000-8f, scale 1:62,500.
- McGarry, C.S. and M.H. Riggs, 2000, Shaded Relief Map of Bedrock Surface, Jo Daviess County, Illinois: Illinois State Geological Survey, Open File Series, OFS2000-8g, scale 1:62,500.
- McGarry, C.S. and M.H. Riggs, 2000, Aquifer Sensitivity Map, Jo Daviess County, Illinois: Illinois State Geological Survey, Open File Series, OFS2000-8i, scale 1:62,500.



FOR ADDITIONAL INFORMATION CONTACT:
 Illinois State Geological Survey
 Natural Resources Building
 615 East Peabody Drive
 Champaign, Illinois 61820
 (217) 333-4747
<http://www.isgs.uiuc.edu>



This map was prepared by the Illinois State Geological Survey, in cooperation with the Illinois Department of Commerce and Community Affairs and the Jo Daviess County Board. It is part of a suite of maps created to assist local government in addressing geologic questions concerning capable sites for landfill development. Maps produced for this study are intended for regional land use planning purposes. More detailed mapping is needed for site-specific considerations. This map has been reviewed for scientific accuracy and edited to meet the quality standards of maps in the ISGS Map Series.