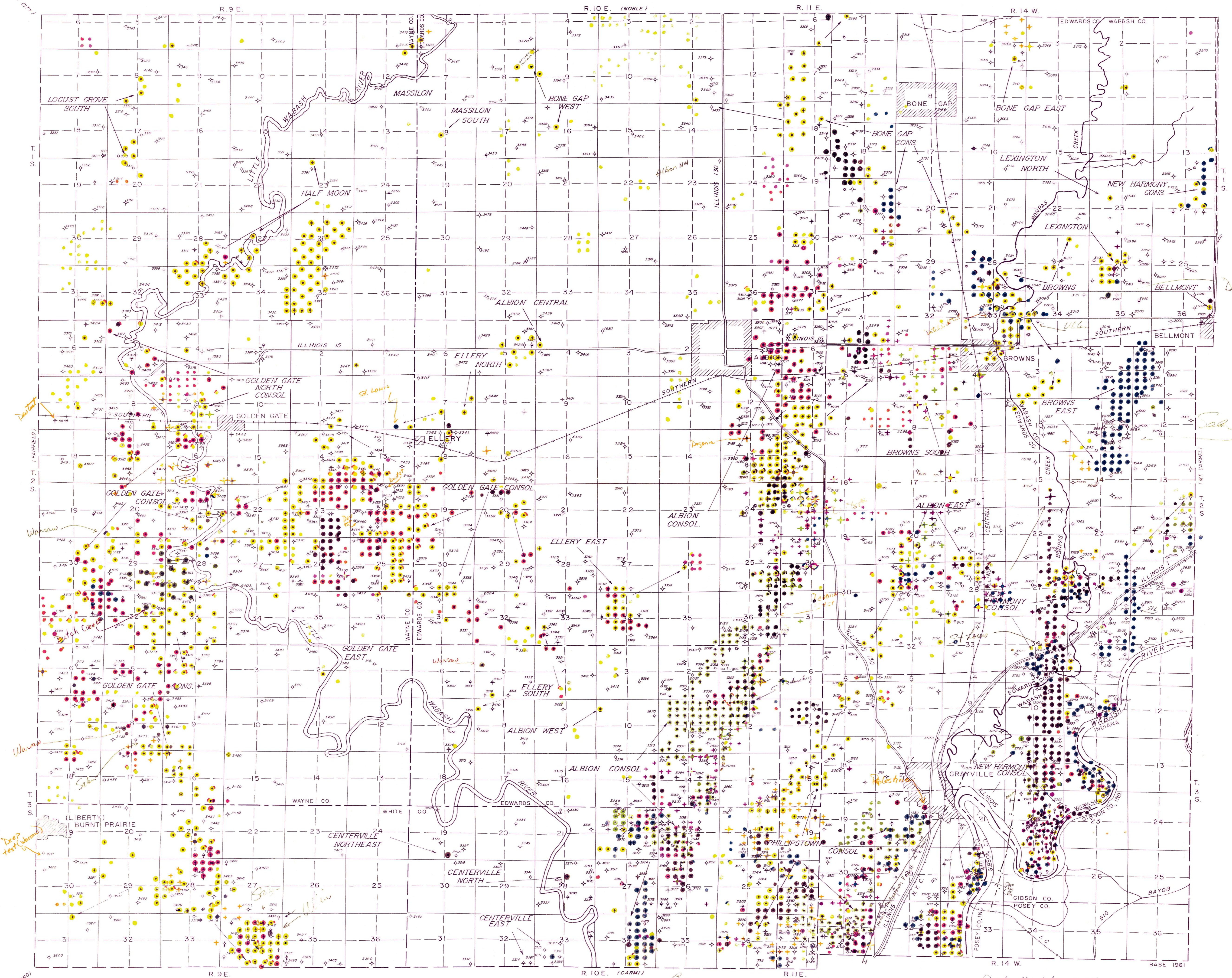
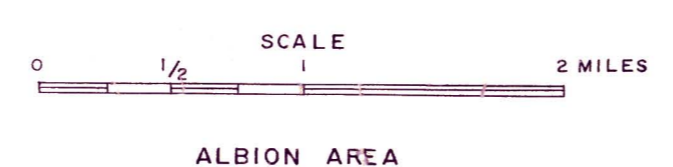


OIL AND GAS DEVELOPMENT MAP, ALBION AREA



- Pennsylvania Dixon 329 (Apple Green)
- Devonian Dixon 381 (Pink)
- Ste. Gen. Dixon 373 (Yellow)
- St. Louis Eagle 740 (Ullmannine)
- Salem Dixon 372 (Orange)
- Warsaw Dixon 399 (Gray)
- Devonian Dixon 375 (Green)
- Bethel Dixon "East" 343 (Brown)
- Renault Eagle 751 (Emerald Green)
- Yankton (Kansan) Dixon 391 or Eagle 752 (Purple)
- Alton Vases Dixon 381 (Pink)
- St. Louis Eagle 740 (Ullmannine)
- Salem Dixon 372 (Orange)
- Warsaw Dixon 399 (Gray)
- Devonian Dixon 375 (Green)
- Bethel Dixon "East" 343 (Brown)
- Renault Eagle 751 (Emerald Green)
- Yankton (Kansan) Dixon 391 or Eagle 752 (Purple)

- OIL WELL
- DISCOVERY WELL (AND DEPTH)
- ABANDONED OIL WELL
- GAS WELL
- ABANDONED GAS WELL
- DRY HOLE (AND DEPTH)
- DRY HOLE; SHOW OF OIL
- WATER INPUT WELL
- GAS INPUT WELL
- OIL WELL CONVERTED TO WATER INPUT WELL
- GAS WELL CONVERTED TO WATER INPUT WELL
- DRY HOLE CONVERTED TO WATER INPUT WELL
- SALT WATER DISPOSAL WELL CONVERTED TO WATER INPUT WELL
- SALT WATER DISPOSAL WELL
- COMBINATION OIL AND SALT WATER DISPOSAL WELL
- OIL WELL CONVERTED TO SALT WATER DISPOSAL WELL
- DRY HOLE CONVERTED TO SALT WATER DISPOSAL WELL
- JUNKED HOLE
- OTHER BORING (AND DEPTH)



ALBION AREA

OCT 1 1964

REVISED

Map brought up to date 10-5-76
1-1-81
1-1-83
11/17-87

(copy only)

 (FAIRFELD)

 (Wabash)

 (Liberty)

 (Mt. Carmel)

 (Mt. Leansboro)