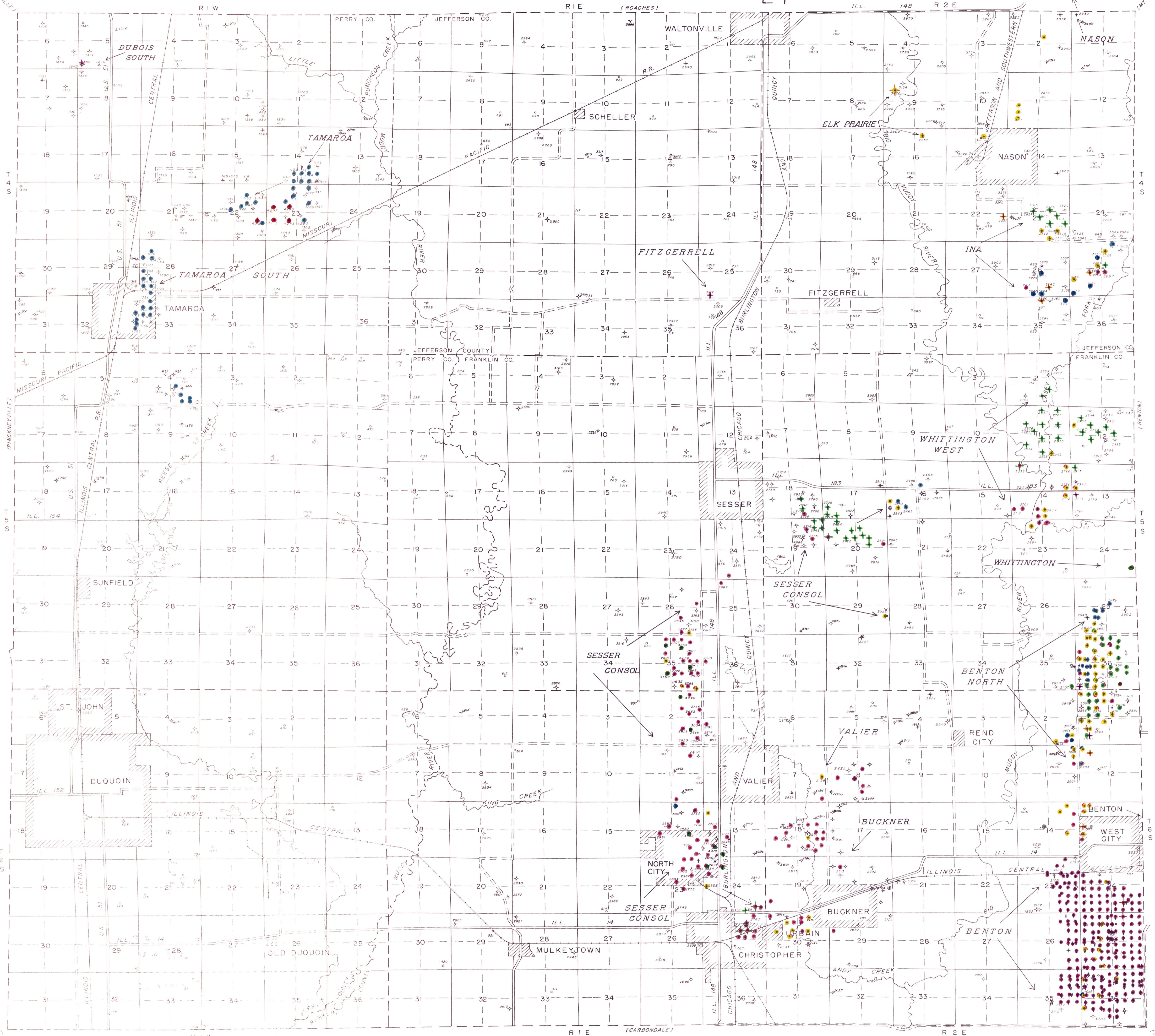


OIL AND GAS DEVELOPMENT MAP, DUQUOIN AREA

#24



- + Kinkaid
- + Dagonia
- + Tar Springs
- Cypress
- Paint Creek
- Bethel
- Benoit
- + Renault
- Bay Cross
- Ste. Genevieve
- St. Louis
- Salem
- Ullin
- Dezonian
- Trenton

- KEY
- OIL WELL
 - DISCOVERY WELL (AND DEPTH)
 - ABANDONED OIL WELL
 - GAS WELL
 - ABANDONED GAS WELL
 - DRY HOLE (AND DEPTH)
 - ⊕ DRY HOLE, SHOW OF OIL
 - ⊕ WATER INPUT WELL
 - ⊕ GAS INPUT WELL
 - ⊕ OIL WELL CONVERTED TO WATER INPUT WELL
 - ⊕ GAS WELL CONVERTED TO WATER INPUT WELL
 - ⊕ DRY HOLE CONVERTED TO WATER INPUT WELL
 - ⊕ SALT WATER DISPOSAL WELL CONVERTED TO WATER INPUT WELL
 - ⊕ SALT WATER DISPOSAL WELL
 - ⊕ COMBINATION OIL AND SALT WATER DISPOSAL WELL
 - ⊕ OIL WELL CONVERTED TO SALT WATER DISPOSAL WELL
 - ⊕ DRY HOLE CONVERTED TO SALT WATER DISPOSAL WELL
 - ⊕ JUNKED HOLE
 - ⊕ OTHER BORINGS (AND DEPTH)

