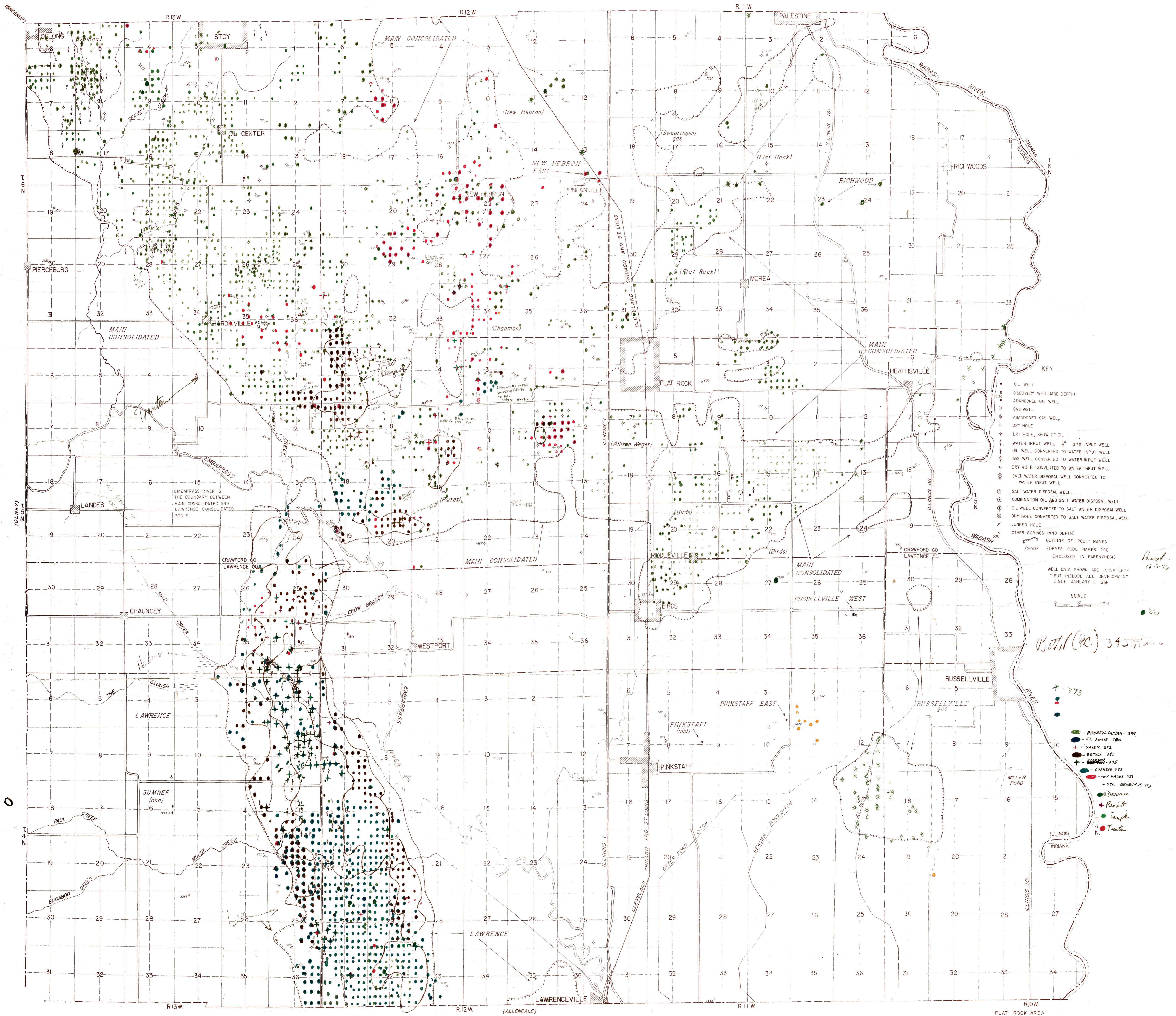


OIL AND GAS DEVELOPMENT MAP
OF THE
55 FLAT ROCK, ILL. AREA

TRUE LINE COPY OF ORIGINAL
IN THE FILES OF
STATE GEOLOGICAL SURVEY
URBANA, ILLINOIS



- KEY
- OIL WELL
 - DISCOVERY WELL (AND DEPTH)
 - ⊕ ABANDONED OIL WELL
 - ⊕ GAS WELL
 - ⊕ ABANDONED GAS WELL
 - ⊕ DRY HOLE
 - ⊕ DRY HOLE, SHOW OF OIL
 - ⊕ WATER INPUT WELL
 - ⊕ GAS INPUT WELL
 - ⊕ OIL WELL CONVERTED TO WATER INPUT WELL
 - ⊕ GAS WELL CONVERTED TO WATER INPUT WELL
 - ⊕ DRY HOLE CONVERTED TO WATER INPUT WELL
 - ⊕ SALT WATER DISPOSAL WELL CONVERTED TO WATER INPUT WELL
 - ⊕ SALT WATER DISPOSAL WELL
 - ⊕ COMBINATION OIL AND SALT WATER DISPOSAL WELL
 - ⊕ OIL WELL CONVERTED TO SALT WATER DISPOSAL WELL
 - ⊕ DRY HOLE CONVERTED TO SALT WATER DISPOSAL WELL
 - ⊕ JUNKED HOLE
 - ⊕ OTHER BORINGS (AND DEPTH)
 - OUTLINE OF POOL NAMES
 - FORMER POOL NAMES ARE ENCLOSED IN PARENTESIS
- WELL DATA SHOWN ARE INCOMPLETE
BUT INCLUDE ALL DEVELOPMENT
SINCE JANUARY 1, 1956
- SCALE
0 1/4 1/2 3/4 1 MILE

- 375
- PENNSYLVANIAN-387
 - ST. ANNE'S 740
 - SALEM 372
 - BETHEL 343
 - PENNSYLVANIAN-375
 - CYPRESS 343
 - AUX VASES 349
 - ST. GENEVIEVE 373
 - DENISON
 - PENNSYLVANIAN
 - SAMPLE
 - TRESTLE

Best (pc) 34311/100

Revised
12-2-56