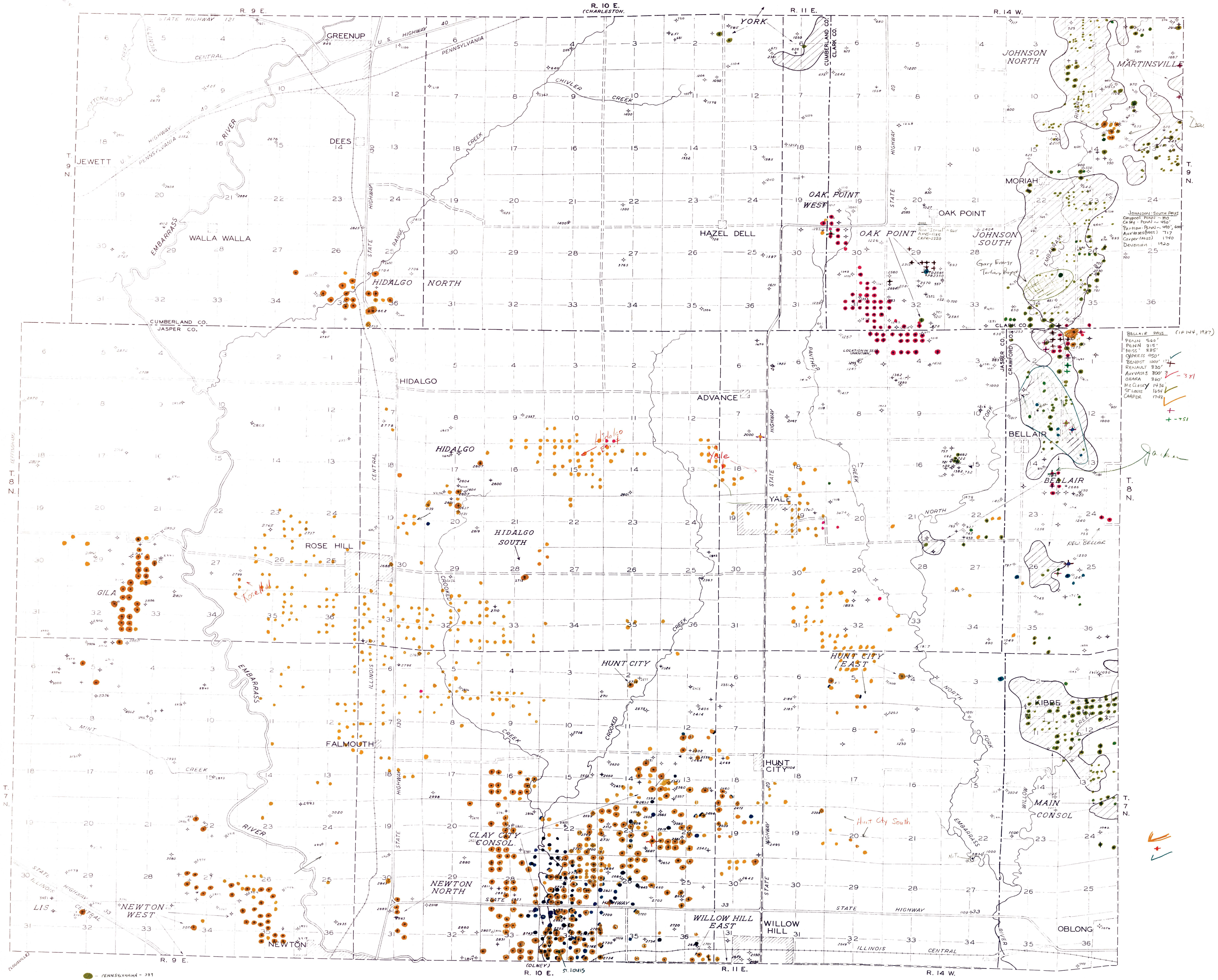


OIL AND GAS DEVELOPMENT MAP, GREENUP AREA



- PENNSYLVANIAN - 381
- CYPRESS - 393
- DEARST - 396
- RENAISSANCE - 751
- ALL VESSES - 381
- STE. GENEVIEVE - 373
- SALEM - 372
- CARPER - 766 1/2
- ST. LOUIS - 740
- DEWITT - 275
- JACKSON - 739 1/2

- KEY
- OIL WELL
 - DISCOVERY WELL (AND DEPTH)
 - ABANDONED OIL WELL
 - GAS WELL
 - ABANDONED GAS WELL
 - DRY HOLE (AND DEPTH)
 - DRY HOLE; SHOW OF OIL
 - WATER INPUT WELL* ○ GAS INPUT WELL*
 - OIL WELL CONVERTED TO WATER INPUT WELL*
 - GAS WELL CONVERTED TO WATER INPUT WELL*
 - DRY HOLE CONVERTED TO WATER INPUT WELL*
 - SALT WATER DISPOSAL WELL CONVERTED TO WATER INPUT WELL*
 - SALT WATER DISPOSAL WELL*
 - COMBINATION OIL AND SALT WATER DISPOSAL WELL*
 - OIL WELL CONVERTED TO SALT WATER DISPOSAL WELL*
 - DRY HOLE CONVERTED TO SALT WATER DISPOSAL WELL*
 - JUNKED HOLE
 - OTHER BORINGS (AND DEPTH)

SCALE
1 MILE
GREENUP AREA

*WELLS NOT YET PLOTTED

BELLAIR DATA (1914, 1927)

- PENNA 566'
- PENN 215'
- MISS 885'
- CINCY 450'
- BEAUST 1000'
- RENAISS 930'
- AVYVAIS 300'
- OHAMA 260'
- McCLELL 1436'
- ST. LOUIS 1654'
- CARPER 1745'

Revised 12-13-76
11-30-87

Cypress - 393
St. Gen. 373
A zone
Yellow