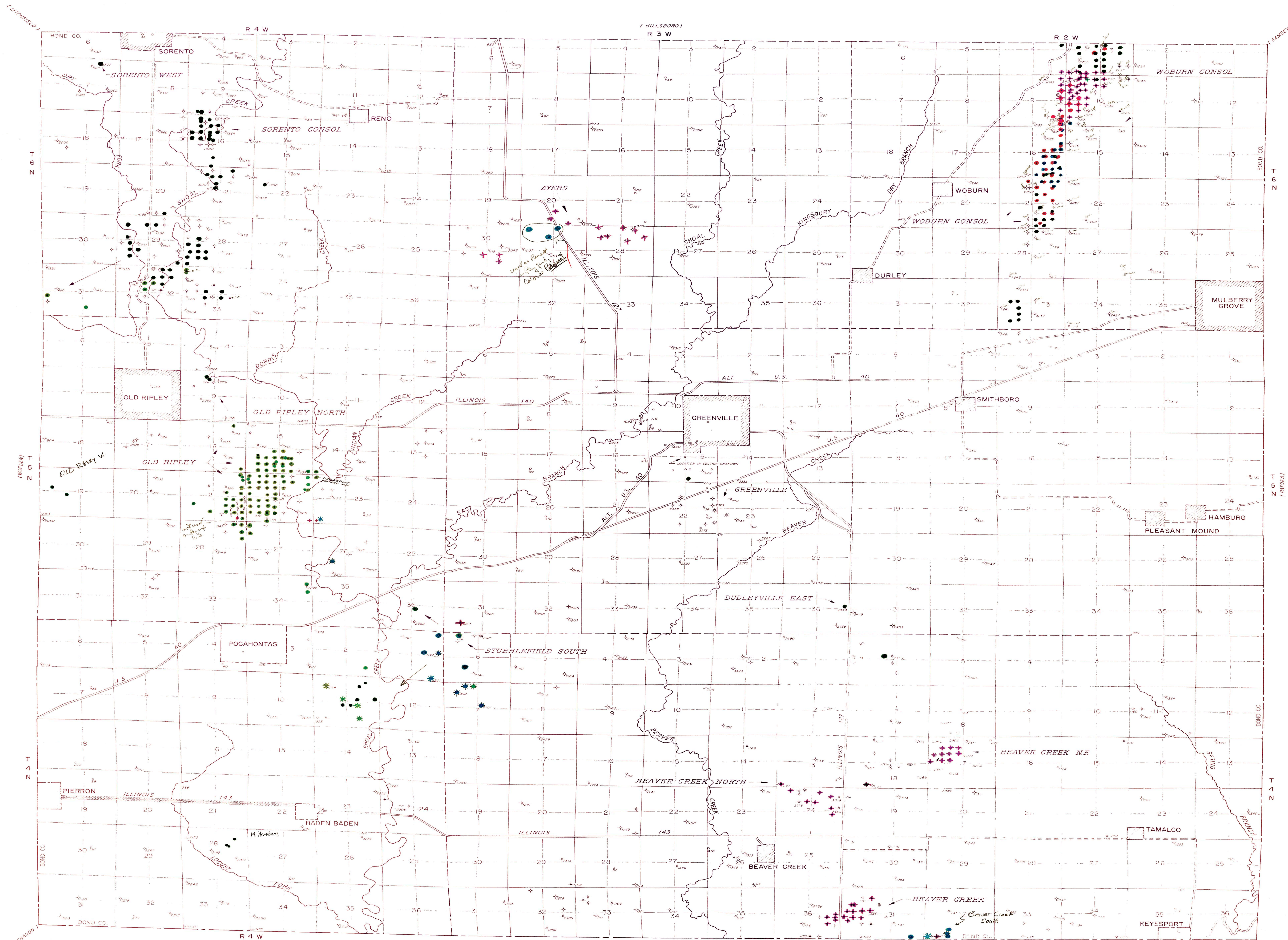


OIL AND GAS DEVELOPMENT MAP, GREENVILLE AREA



- - AUX VASES - 381
- - CYPRESS - 393
- - BEAVER - 396
- - PENNSYLVANIAN - 375
- - PENNSYLVANIAN - 397
- - TRENTON - 745
- - **Beaver** - 751
- - **Beaver Creek** - 751

- KEY**
- OIL WELL
  - DISCOVERY WELL (AND DEPTH)
  - ABANDONED OIL WELL
  - GAS WELL
  - ABANDONED GAS WELL
  - DRY HOLE (AND DEPTH)
  - ⊕ DRY HOLE, SHOW OF OIL
  - ⊕ WATER INPUT WELL
  - ⊕ GAS INPUT WELL
  - ⊕ OIL WELL CONVERTED TO WATER INPUT WELL
  - ⊕ GAS WELL CONVERTED TO WATER INPUT WELL
  - ⊕ DRY HOLE CONVERTED TO WATER INPUT WELL
  - ⊕ SALT WATER DISPOSAL WELL CONVERTED TO WATER INPUT WELL
  - ⊕ SALT WATER DISPOSAL WELL
  - ⊕ COMBINATION OIL AND SALT WATER DISPOSAL WELL
  - ⊕ OIL WELL CONVERTED TO SALT WATER DISPOSAL WELL
  - ⊕ DRY HOLE CONVERTED TO SALT WATER DISPOSAL WELL
  - ⊕ JUNKED HOLE
  - ⊕ OTHER BORINGS (AND DEPTH)

SCALE  
0 1 2 MILES  
GREENVILLE AREA

Revised 12-11-76  
1/1/83  
11/24/87