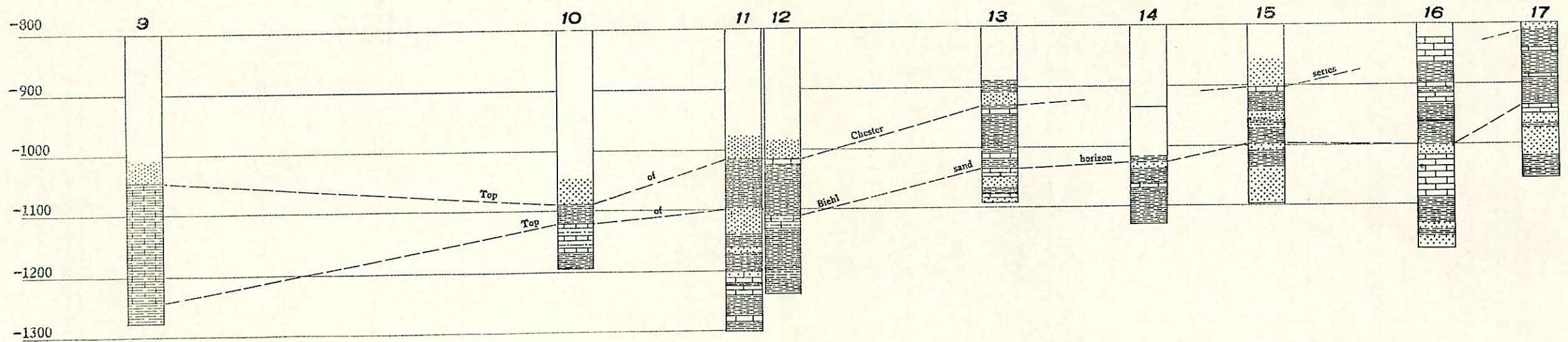


A Section along line A-B on Plate I



B Section along line C-D on Plate I

1. S. G. Reel, No. 1
SW. ¼ SW. ¼ SE. ¼ sec. 25, T. 1 S., R. 13 W.
2. Ezra Risley
Center of SW. ¼ NE. ¼ sec. 11, T. 1 S., R. 13 W.
3. Paul Newkirk, No. 1
SW. cor. SE. ¼ NE. ¼ sec. 36, T. 1 N., R. 13 W.
4. Otis Matheny, No. 2
NW. cor. SW. ¼ sec. 18, T. 1 N., R. 12 W.
5. E. H. Pixley, No. 1
SW. cor. SE. ¼ SE. ¼ sec. 7, T. 1 N., R. 12 W.
6. J. L. Lutz, No. 1
NE. cor. NW. ¼ sec. 8, T. 1 N., R. 12 W.
7. W. J. Schick, No. 1
SW. cor. NW. ¼ SE. ¼ sec. 5, T. 1 N., R. 12 W.
8. W. A. Andrews, No. 1
SW. cor. SE. ¼ SE. ¼ sec. 32, T. 2 N., R. 12 W.

9. McGregor, No. 1
NW. cor. sec. 4, T. 1 S., R. 13 W.
10. Dr. Couch, No. 1
SE. cor. sec. 23, T. 1 N., R. 13 W.
11. S. A. Zeigler, No. 3
NW. ¼ SE. ¼ SE. ¼ sec. 13, T. 1 N., R. 13 W.
12. Otis Matheny, No. 2
NW. ¼ SW. ¼ sec. 18, T. 1 N., R. 12 W.
13. Della Wright, No. 1
SW. ¼ NW. ¼ SE. ¼ sec. 8, T. 1 N., R. 12 W.
14. Ed Smith, No. 8
NE. cor. sec. 9, T. 1 N., R. 12 W.
15. Lucy Courter, No. 14
SE. cor. NW. ¼ SE. ¼ NW. ¼ sec. 3, T. 1 N., R. 12 W.
16. Jim Cogan, No. 1
SE. cor. NW. ¼ sec. 33, T. 2 N., R. 12 W.
17. Josiah Barthelmy
SE. cor. NW. ¼ SE. ¼ sec. 26, T. 2 N., R. 12 W.

Sections showing structure and rock changes in Chester beds as determined from borings along the section lines A-B and C-D indicated on Plate I. For legend, see Plate II.